

Community Meeting

**Takoma Park Water and Sewer Rehabilitation Phase 1
(WSSC Contract No BRCRLR5355C12)**

Washington Suburban Sanitary Commission

WWW.WSSCWATER.COM

Takoma Park Community Center

7500 Maple Avenue, Takoma Park, MD 20912

9/17/2018, 6:00PM

WSSC Project Team

- **Bhusan Basnet – Design Project Manager**
Phone: 301-206-7946, Email: Bhusan.Basnet@wsscwater.com
- **Kevin Lethbridge – Construction Manager**
Phone: 301-206-7339, Email: Kevin.Lethbridge@wsscwater.com
- **Curtis Pinder – Technical Contracts Supervisor**
Phone: 301-642-7339, Email: Curtis.Pinder@wsscwater.com
- **Brandon Stewart – Customer Advocate**
Phone: 301-642-1712, Email: Brandon.Stewart@wsscwater.com
- **Project Designer**
The Wilson T. Ballard Company

Background

Existing Infrastructure:

- The existing pipelines have reached the end of their useful life cycle.
 - Installed: 1920's - 1930's
 - Current pipe conditions: infiltration, joint offset, disintegration, holes, corrosion, tuberculation, etc...
 - Materials:
 - Sewer - terra cotta,
 - Water - cast iron

Infiltration



Joint Offset



Broken - Disintegrated



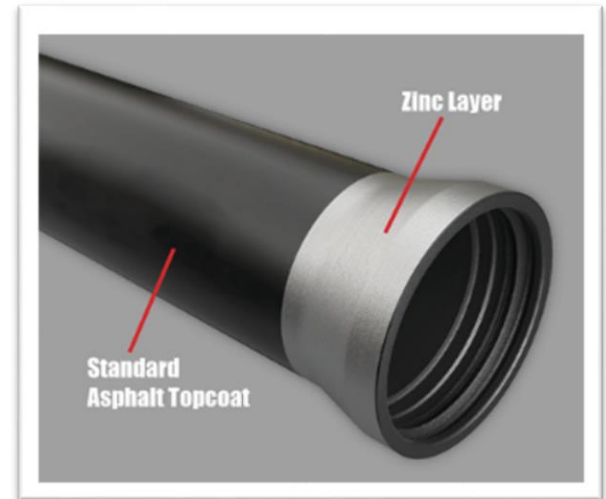
Tuberculated



Infrastructure Enhancements

New Water Infrastructure

- The new water mains are made from zinc coated Ductile iron pipes.
 - Life expectancy of approximately 100 years
 - Enhanced corrosion protection that includes:
 - Zinc coating – external, National Sanitation Foundation (NSF) approved
 - V-Bio Enhanced Polyethylene Encasement
- 3 new Fire Hydrants
- Project Benefits
 - Increase fire flow and protection
 - Designed to meet future demand



***Reduced Leaks and Breaks / Enhanced Emergency Support
Less Future Operation and Maintenance***

Infrastructure Enhancements

New Sewer Infrastructure

- The new sewer mains are Polyvinyl Chloride (PVC) and High Density Polyethylene (HDPE) pipes

- Non-Corrosive
- Chemical resistant
- Flexible and fatigue resistant
- Less chance of tuberculation
- Cost effective



New Water and Sewer Infrastructure provide safe and reliable services to the community

Project Overview

Project Scope:

- Front Yard Installation
- New pipelines:
 - Water Mains: 8-inch (0.2 miles)
 - Sewer Mains: 1 ¼ inch, 8-inches, and 12-inch (0.2 miles)
 - House Connections/Service Lines:
 - Water – 1 ½-inch
 - Sewer – 4-inch gravity
- Grinder pumps:
 - 1 ¼-inch service lines
 - Mobile Honda generator w/propane power
 - 12-year warranty (grinder pump) – service warranty starts after manufacturer warranty ends
 - 3 properties, involves work inside home

Project Map

PHASE I - SOUTH SECTION



PHASE I - NORTH SECTION



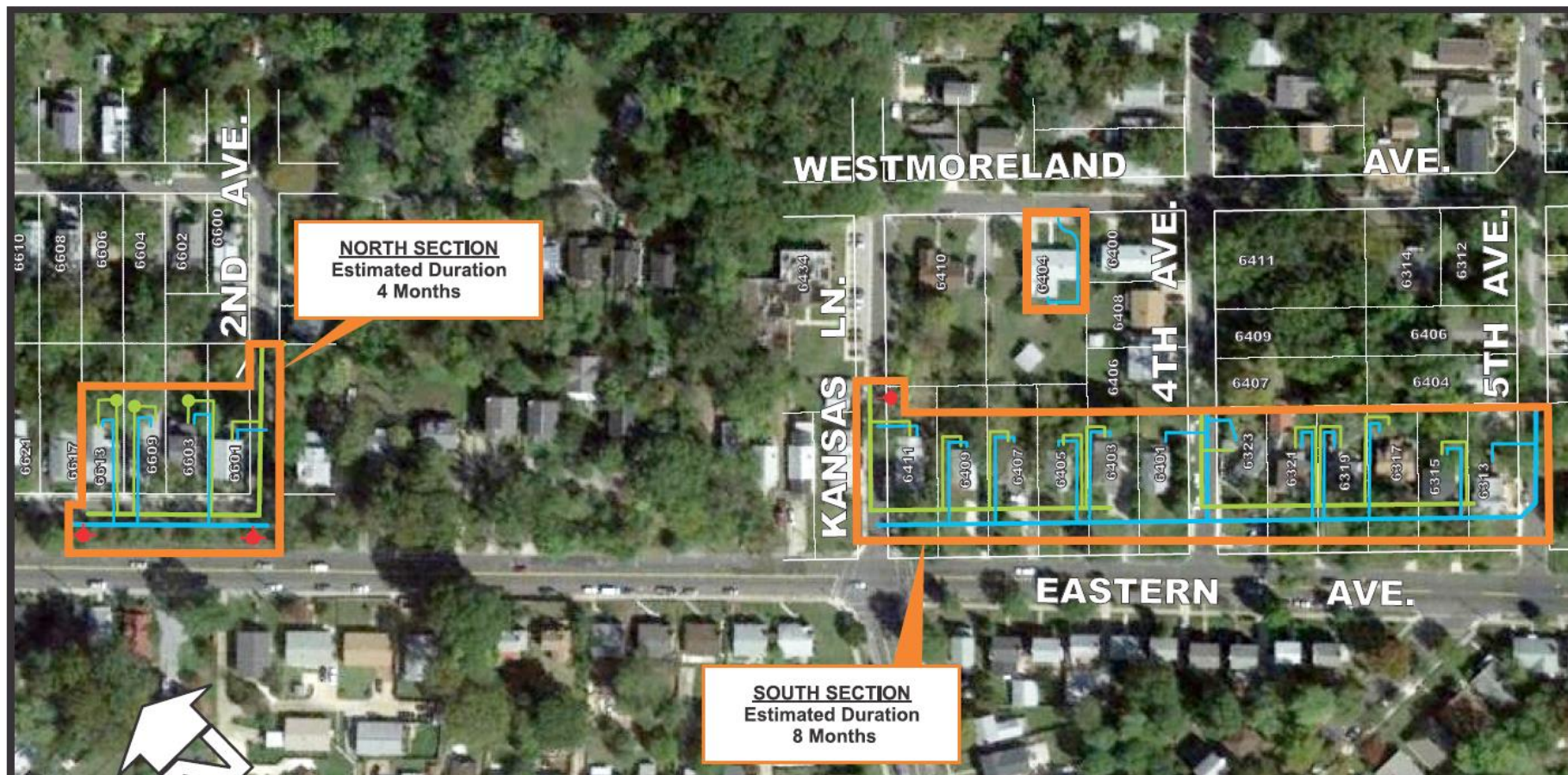
This is a graphical depiction of the general location of new facilities. Please view plans for exact locations of new facilities.

LEGEND

-  Fire Hydrant
-  Water
-  Sanitary Sewer
-  Grinder Pump
-  Limit of Disturbance

Proposed Project Schedule

TAKOMA PARK WATER AND SEWER MAIN REPLACEMENTS PHASE 1



Estimated Schedule

Steps	Contract <= \$1.2 Mil.	Contract > \$1.2 Mil. *
Bid Due	October 1, 2018	October 1, 2018
Contract Award	November 12, 2018	Early January, 2019
Construction Start	December 2018	Late January, 2019
Construction Complete	December 2019	January 2020

** Requires Commissioner's approval*

***Timelines are estimated and weather permitting*

Construction

What to Expect:

- Anticipated Work Schedule: 8:00 am – 4:00 pm, Monday-Friday
- Construction Activities:
 - Surveying and Utility Mark-Outs
 - Field Reviews and Inspection
 - Open-Cut (trench) method
 - Excavation/Water and Sewer Mains Installation
- Heavy Construction Equipment
- Reliable water/sewer services will be maintained
- Short periods of water service interruptions can be expected:
 - Up to 8-hours (maximum)
 - 24-hour advance notification will be provided

Construction

What to Expect:

- No parking on streets within active construction zones
 - 48-hours advanced notification will be provided.
 - 'NO PARKING' signs will be posted.
 - All roads will remain accessible at all times during construction. However, certain activities may require temporary closures and delays
- Access to homes will be maintained at all times.
- Home Access
 - Not required for homes with gravity sewers installation option
 - Required for homes with grinder pump installation option
 - Ensure an adult 18 or older is home to grant WSSC personnel access into your home.
 - All WSSC employees and contractors will display identification at all times.

Construction

What to Expect:

- Construction signs (with contact information) will be posted at multiple locations throughout the project area.
- Other utilities such as Gas, Electric, Fiber Optics, Storm Drainage, etc. will not be impacted by construction activities.
- Warranty information will be provided to each homeowner for the work completed on property at the completion of their section.

Tree Removal

What to Expect

- Trees and shrubs will be replaced in adherence to the City of Takoma Park requirements.
- WSSC and City of Takoma Park Urban Foresters will supervise all tree removal, replacement and pruning.
- Locations of the new trees/shrubs will be decided in consultation with the City of Takoma Park and homeowners.

Tree	Removal	Replanting
Public	19	40
Private	9	21
Total	28	61
Shrub	Removal	Replanting
Public	3	6
Private	10	18
Total	13	24

Construction

Typical Notification Signage



Construction

Typical Trench Outside Paved Area



Construction

Typical Trench Within Paved Area



Construction

Typical Construction Equipment



Construction

Typical Tree Protection Measures

Trunk Protection



Alturamat*



Silt Fence



Tree Protection



**Installation will take place at three locations to protect grounds and trees.*

Project Summary

- The existing water and sewer mains are at the end of their useful lives.
- WSSC will be installing new water and sewer mains in the front yard and new service connections to the back of the property at the existing service connection.
- WSSC is committed to minimizing service disruptions during construction.
- WSSC will restore all areas impacted by construction activities.
- Warranty information is provided to each home owner for the work completed on property at the completion of their section.
- WSSC's goal is to provide a safe and reliable water and sewer services to the community.

Thank You!

Questions?