

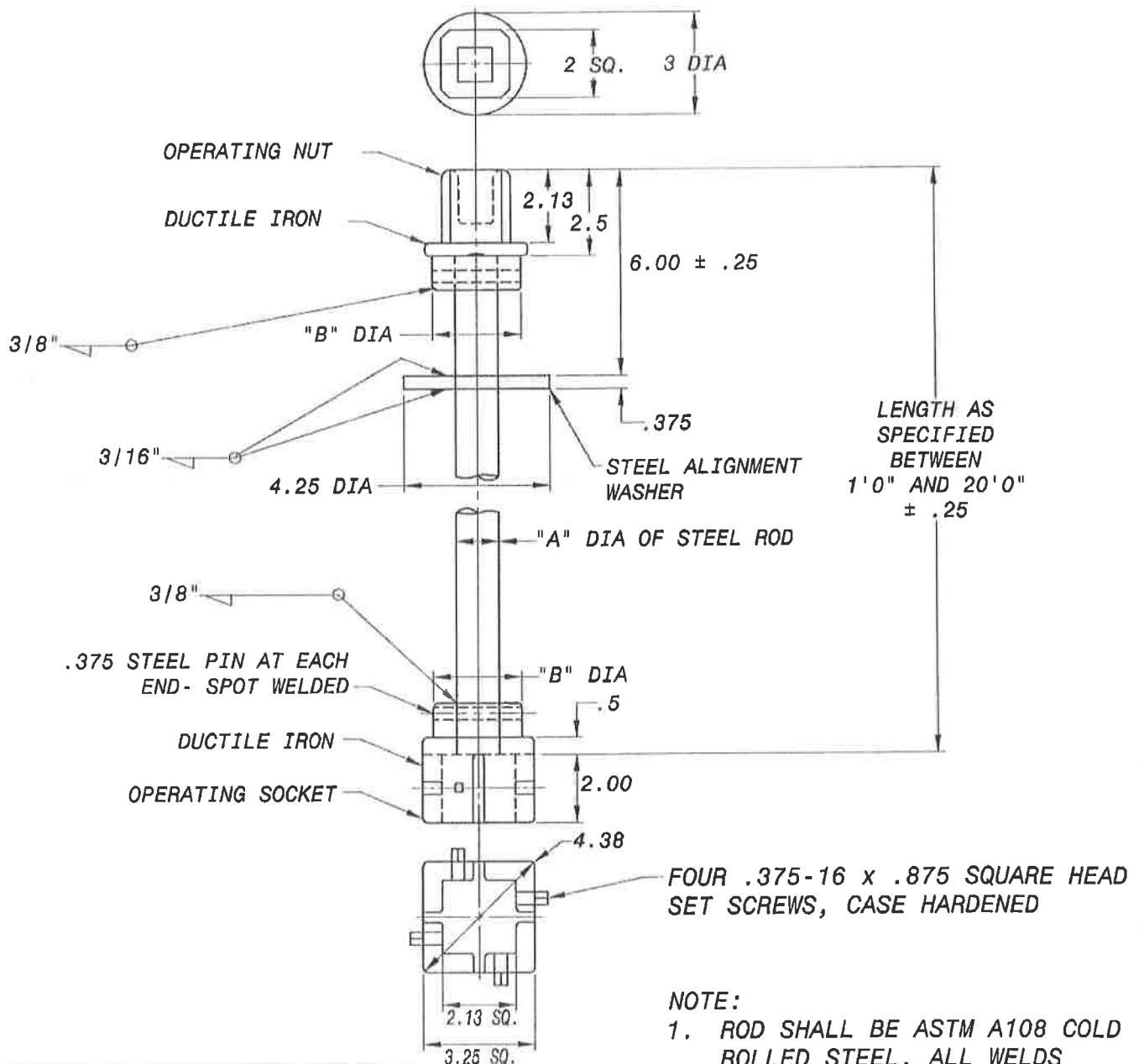
"A" DIAMETER OF STEEL ROD: 1-1/4"

"B" DIAMETER: 2"

APPLICABLE STOCK NO'S.

4840-0001-3

THRU-0007-0



ALL DIMENSIONS ARE IN INCHES OTHERWISE SPECIFIED.

TOLERANCES:

ALL 2 PLACE DECIMALS $\pm .06$
ALL 3 PLACE DECIMALS $\pm .062$

NOTE:

1. ROD SHALL BE ASTM A108 COLD ROLLED STEEL. ALL WELDS SHALL BE RADIUS 1/2"
2. APPROVED ALTERNATE DESIGN: KRAVITCH MACHINE CO. MODEL NO. GVENOXXCR
3. SHALL BE CLEANED AND COATED BY AN APPROVED PROCESS AND COATING(2 COATS)

WASHINGTON
SUBURBAN
SANITARY
COMMISSION

REVISIONS:

APPROVED: *7 MARCH 2016*

MATERIAL AND SERVICES GROUP LEADER

J.A. GARCIA

PROCUREMENT AND MANUFACTURING DETAIL

VALVE EXTENSION
STEM FOR VALVE
BOXES

P&M
1.4

(REVISED 3/2016) P&M1.4