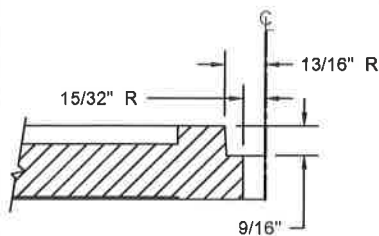
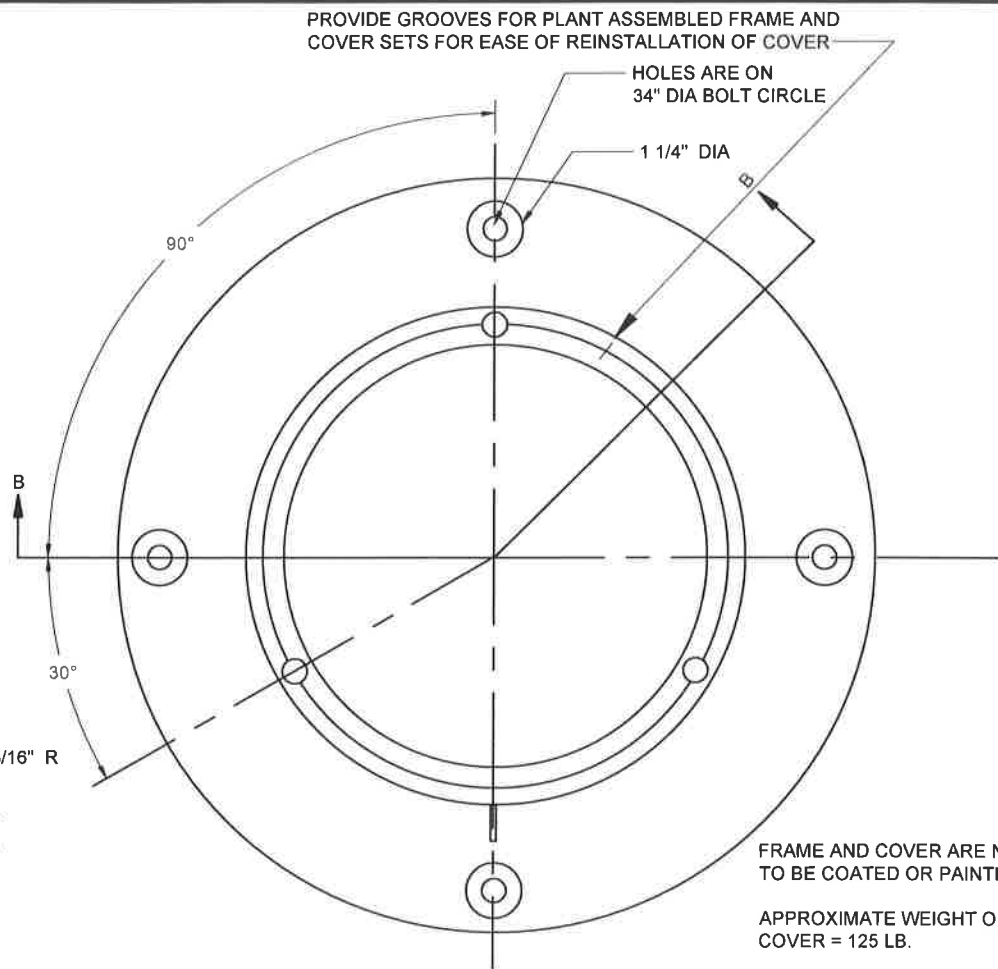


**STAINLESS BOLT
DETAILS**



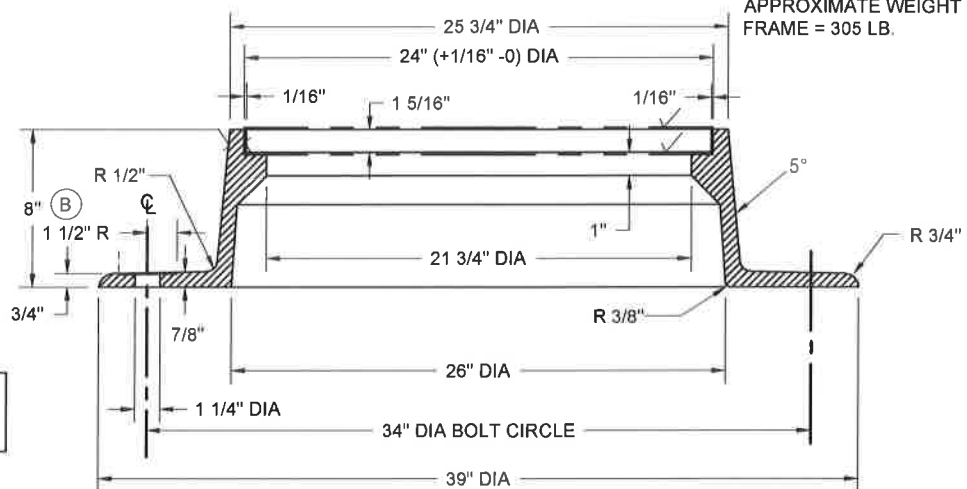
COUNTERBORE DETAIL



FRAME AND COVER ARE NOT
TO BE COATED OR PAINTED

APPROXIMATE WEIGHT OF
COVER = 125 LB.

APPROXIMATE WEIGHT OF
FRAME = 305 LB.



SECTION B - B

SEE DETAIL P&M 10.7a
FOR CONTINUATION

MATERIAL SPECIFICATION:
GRAY IRON ASTM A48 CL35B

CASTINGS SHALL CONFORM TO AND BE MANUFACTURED
IN ACCORDANCE WITH THE REQUIREMENTS OF AASHTO
STD M306, LATEST REVISION

APPLICABLE STOCK NOS.
5680-9025-2
5680-9028-6
5680-9050-0

WASHINGTON
SUBURBAN
SANITARY
COMMISSION

APPROVED:

MATERIAL AND SERVICES GROUP LEADER

PROCUREMENT AND MANUFACTURING DETAIL
**ALTERNATE LOCKING TYPE-
WATERTIGHT 22" MANHOLE
FRAME & COVER**

**P&M
10.7b**

(REVISED 3/2016) P&M10.7b