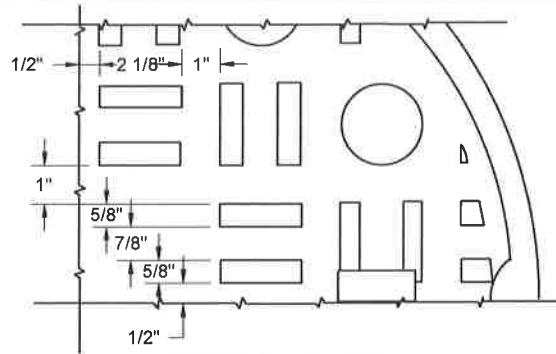
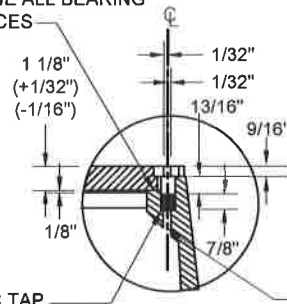


INSIGNIA DETAILS

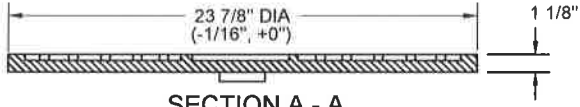
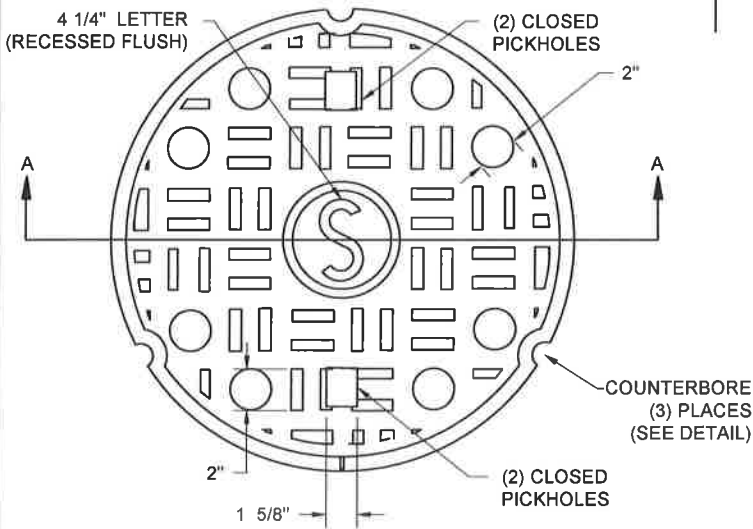


MACHINE ALL BEARING SURFACES

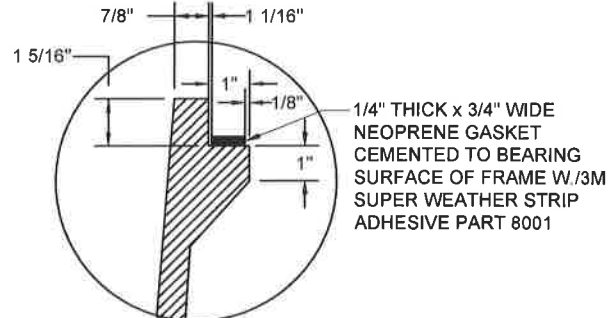


CROSS SECTION OF BOLT DOWN HOLE

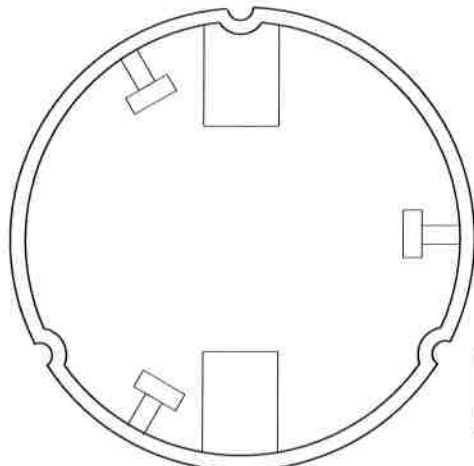
NOTE: DRILL THRU FOR DRAIN, DRILL AND TAP FOR 5/8" Ø - 11 BOLT



SECTION A - A



GASKET DETAIL



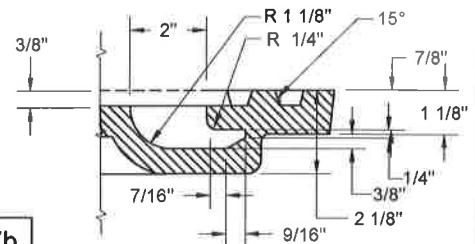
BOTTOM VIEW

SEE DETAIL P&M 10.7b FOR CONTINUATION

MATERIAL SPECIFICATION:
GRAY IRON ASTM A48 CL35B

APPLICABLE STOCK NOS.
5680-9025-2
5680-9028-6
5680-9050-0

CASTINGS SHALL CONFORM TO AND BE MANUFACTURED IN ACCORDANCE WITH THE REQUIREMENTS OF AASHTO STD M306, LATEST REVISION



PICKHOLE DETAIL

WASHINGTON
SUBURBAN
SANITARY
COMMISSION

APPROVED: 3/17/16
[Signature]
MATERIAL AND SERVICES GROUP LEADER

PROCUREMENT AND MANUFACTURING DETAIL
**ALTERNATE LOCKING TYPE-
WATERTIGHT 22" MANHOLE
FRAME & COVER**

**P&M
10.7a**