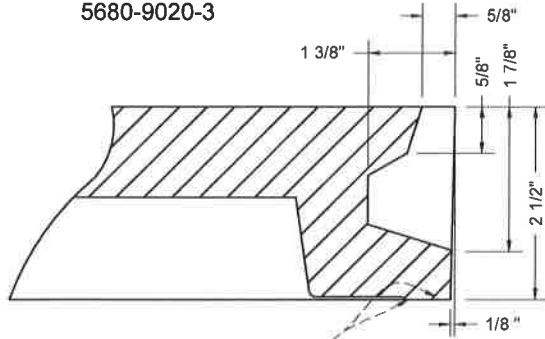


APPLICABLE STOCK NOS.

5680-9009-6

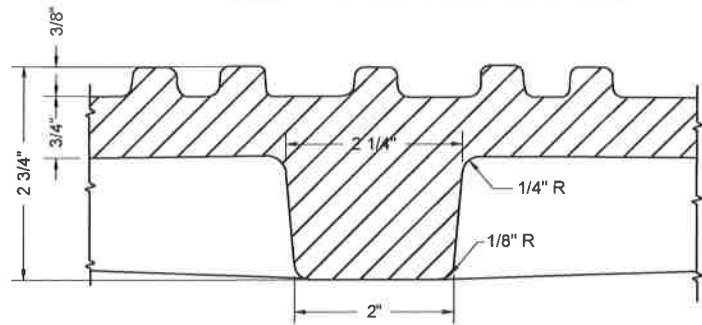
5680-9010-4

5680-9020-3

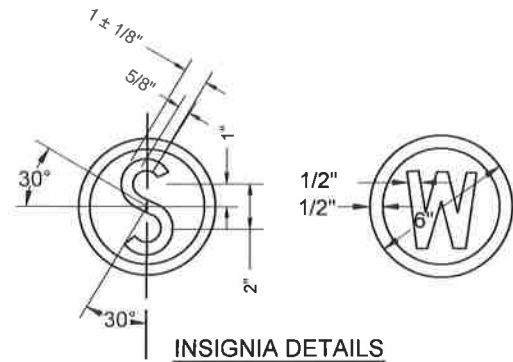


MACHINE ALL BEARING SURFACES

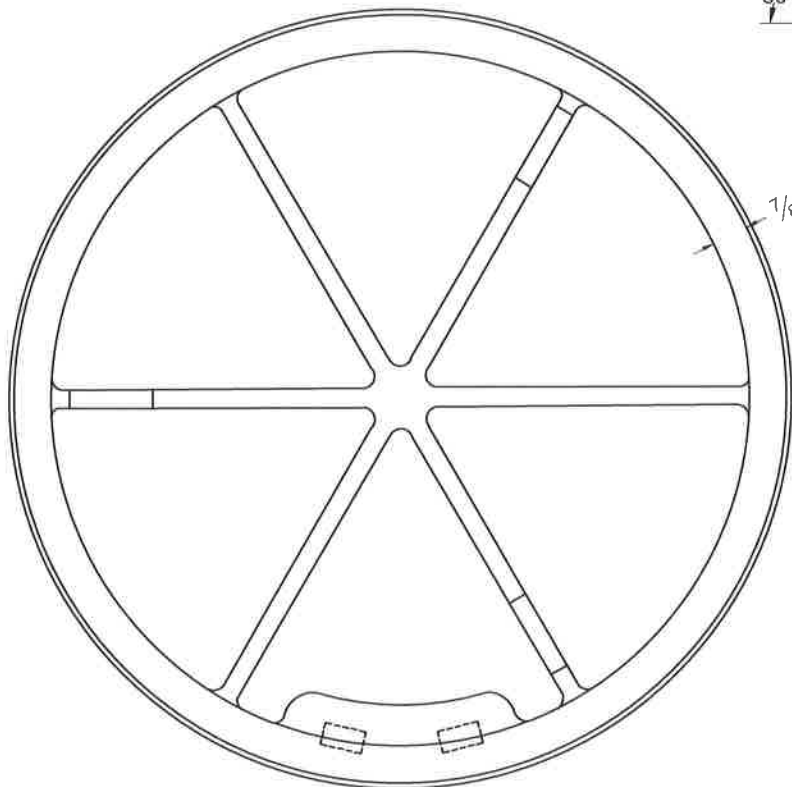
SECTION B-B



SECTION C-C



INSIGNIA DETAILS



BOTTOM VIEW
OF COVER

SEE DETAIL P&M 10.5a
FOR CONTINUATION

MATERIAL SPECIFICATION:
GRAY IRON ASTM A48 CL35B

CASTINGS SHALL CONFORM TO AND BE
MANUFACTURED IN ACCORDANCE WITH
THE REQUIREMENTS OF AASHTO STD M306,
LATEST REVISION

WASHINGTON
SUBURBAN
SANITARY
COMMISSION

APPROVED:

3/17/16

[Signature]
MATERIAL AND SERVICES GROUP LEADER

PROCUREMENT AND MANUFACTURING DETAIL

STANDARD 22" NON-WATERTIGHT
MANHOLE FRAME & COVER

P&M
10.5b

(REVISED 3/2016) P&M10.5b