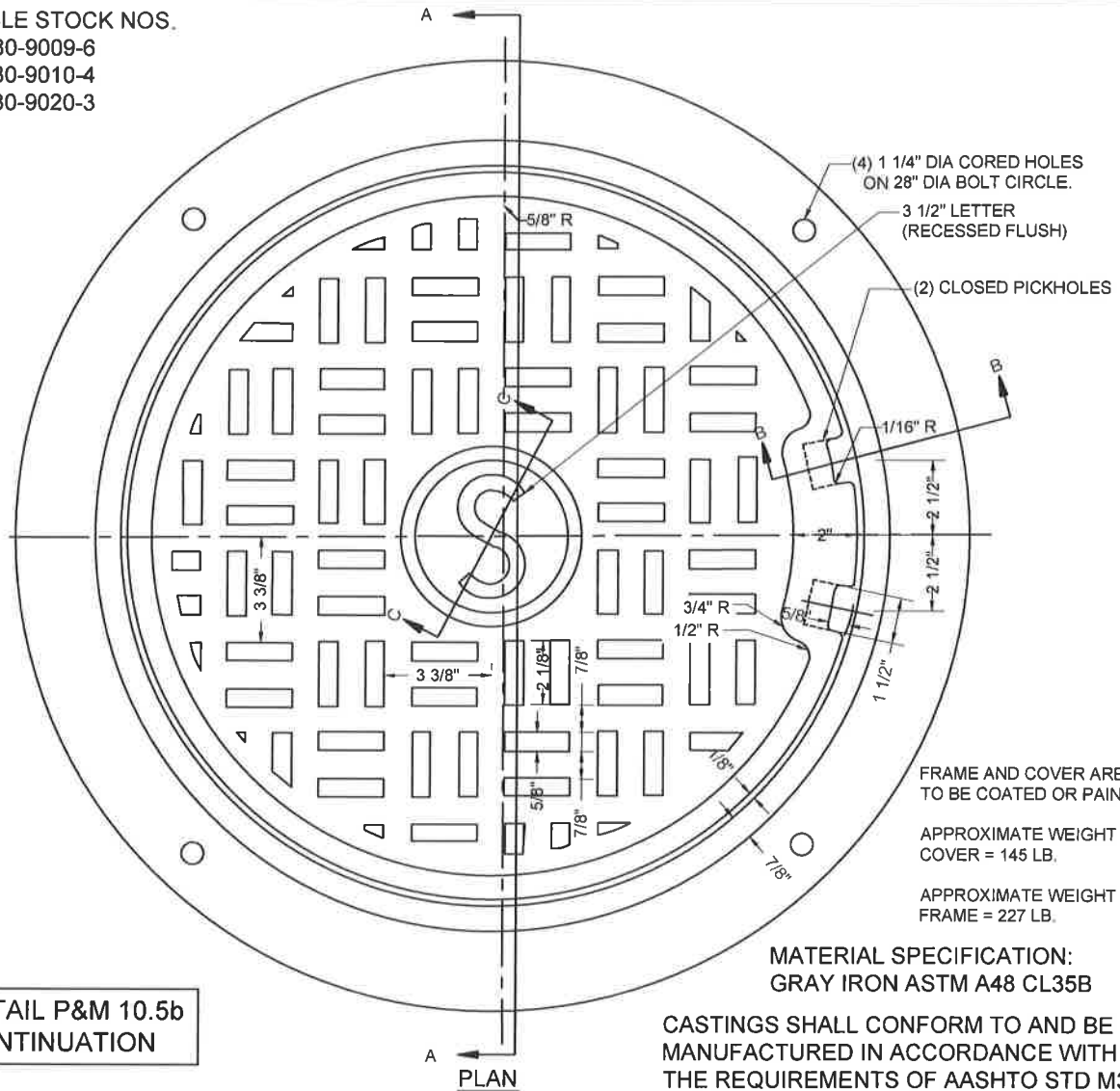


APPLICABLE STOCK NOS.

5680-9009-6  
5680-9010-4  
5680-9020-3



FRAME AND COVER ARE NOT TO BE COATED OR PAINTED

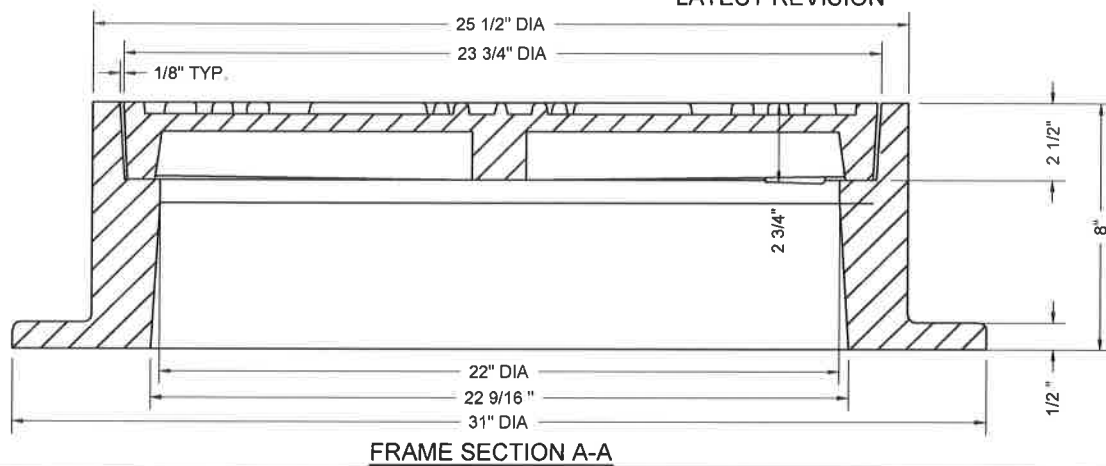
APPROXIMATE WEIGHT OF COVER = 145 LB.

APPROXIMATE WEIGHT OF FRAME = 227 LB.

MATERIAL SPECIFICATION:  
GRAY IRON ASTM A48 CL35B

CASTINGS SHALL CONFORM TO AND BE MANUFACTURED IN ACCORDANCE WITH THE REQUIREMENTS OF AASHTO STD M306, LATEST REVISION

SEE DETAIL P&M 10.5b FOR CONTINUATION



WASHINGTON  
SUBURBAN  
SANITARY  
COMMISSION

APPROVED:

MATERIAL AND SERVICES GROUP LEADER

PROCUREMENT AND MANUFACTURING DETAIL

STANDARD 22" NON-WATERTIGHT  
MANHOLE FRAME & COVER

P&M  
10.5a

(REVISED 3/2016) P&M10.5a