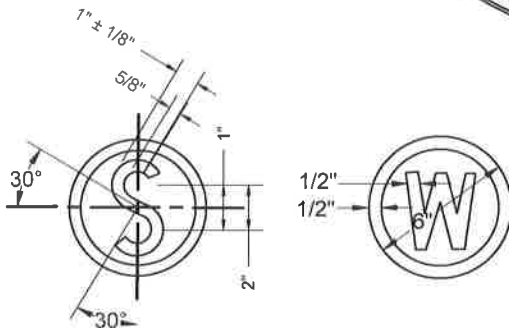


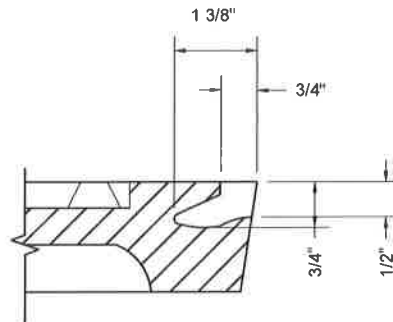
BOTTOM VIEW

APPROXIMATE WEIGHT OF
FRAME = 130 LBS

APPROXIMATE WEIGHT OF
NON-TRAFFIC COVER = 65 LBS



INSIGNIA DETAILS



PICKHOLE DETAIL

MATERIAL SPECIFICATION:
GRAY IRON ASTM A48 CL35B

FRAME SHALL CONFORM TO AND BE
MANUFACTURED IN ACCORDANCE WITH
THE REQUIREMENTS OF AASHTO STD
M306, LATEST REVISION

SEE DETAIL P&M 10.4a
FOR CONTINUATION

APPLICABLE STOCK NOS.

5680-9011-2

5680-9012-0

5680-9021-1

*5680-9013-8

* TRAFFIC RATED WATER COVER
(SEE P&M/10.4B)

WASHINGTON
SUBURBAN
SANITARY
COMMISSION

REVISIONS:

APPROVED: *3/17/16*

MATERIAL AND SERVICES GROUP LEADER

PROCUREMENT AND MANUFACTURING DETAIL

**LIGHTWEIGHT MANHOLE
FRAME & COVER**

**P&M
10.4a1**