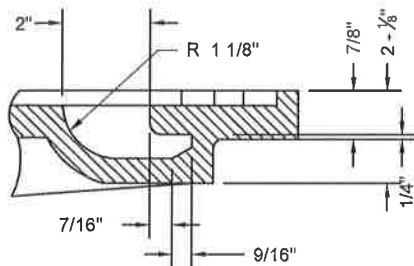
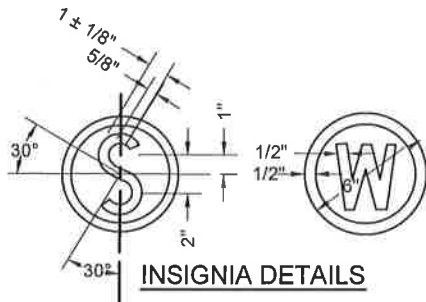


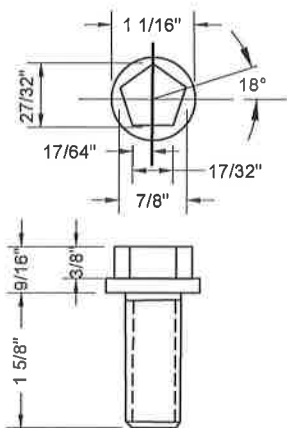
APPLICABLE STOCK NOS.
 5680-9026-0 5680-9029-4
 5680-9051-8 5680-9060-9



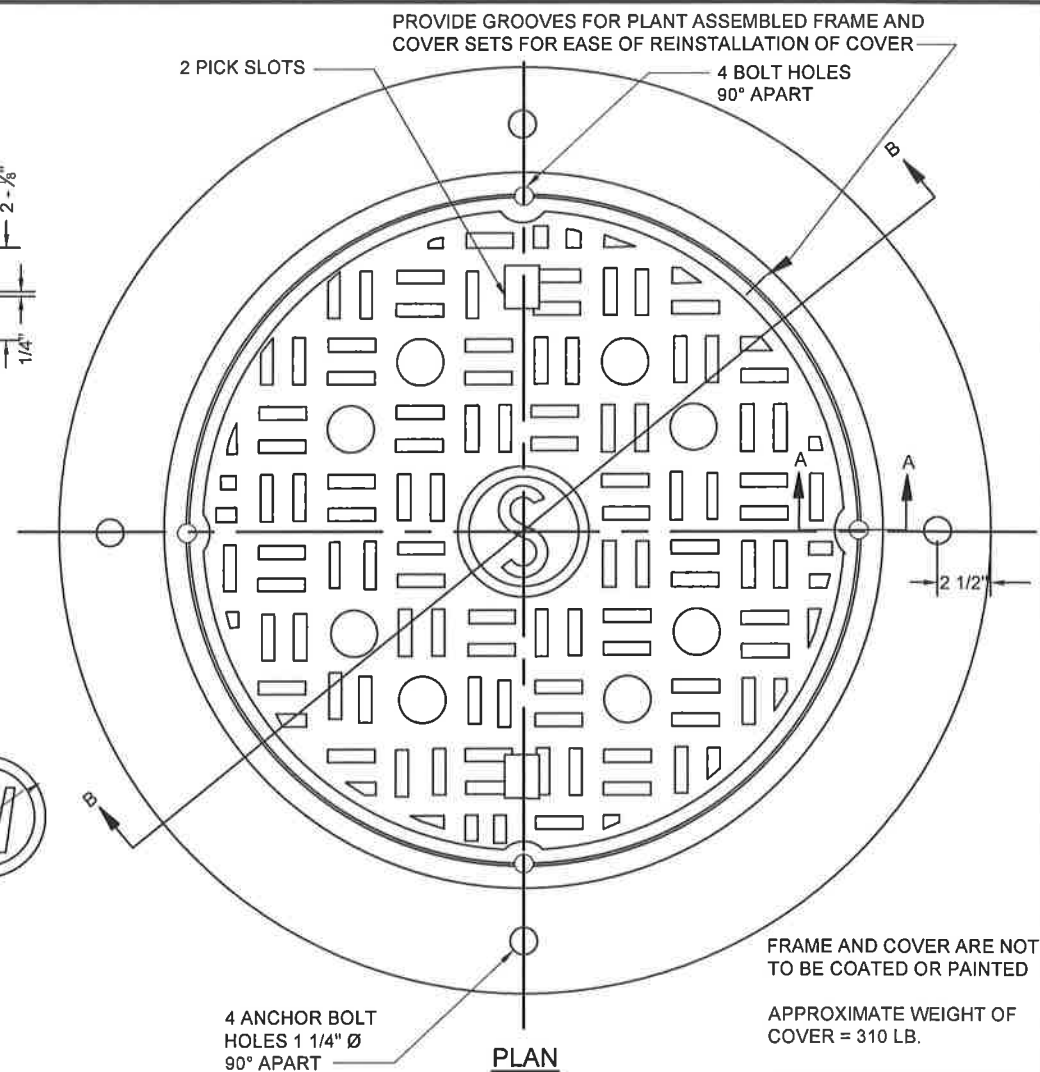
PICKHOLE DETAIL



INSIGNIA DETAILS



**STAINLESS STEEL
 LOCK BOLT
 AISI TYPE 304
 STAINLESS STEEL**

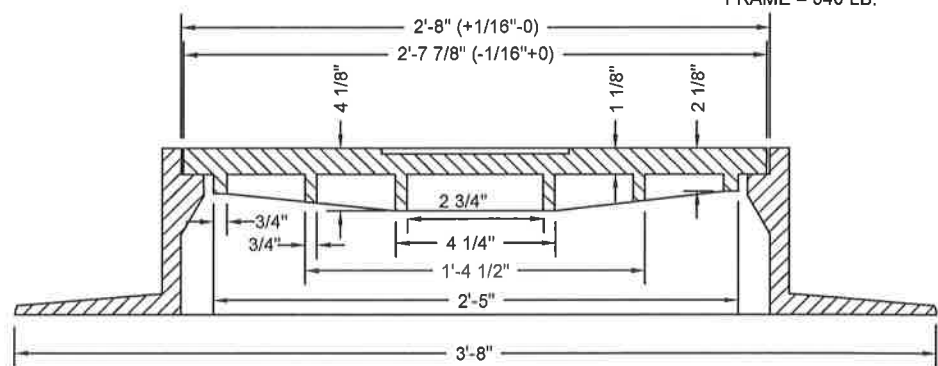


PLAN

FRAME AND COVER ARE NOT
 TO BE COATED OR PAINTED

APPROXIMATE WEIGHT OF
 COVER = 310 LB.

APPROXIMATE WEIGHT OF
 FRAME = 340 LB.



SECTION B-B

**SEE DETAIL P&M 10.1a
 FOR CONTINUATION**

MATERIAL SPECIFICATION:
 GRAY IRON ASTM A48 CL35B
 CASTINGS SHALL CONFORM TO AND BE MANUFACTURED
 IN ACCORDANCE WITH THE REQUIREMENTS OF AASHTO
 STD M306, LATEST REVISION

REFERENCE WSSC DWG NO. 721471Y, LATEST REVISION 1-29-81

WASHINGTON
 SUBURBAN
 SANITARY
 COMMISSION

REVISIONS:
 APPROVED: 3/17/16

MATERIAL AND SERVICES GROUP LEADER

PROCUREMENT AND MANUFACTURING DETAIL

**LOCKING TYPE-WATERTIGHT
 30" MANHOLE FRAME & COVER**

**P&M
 10.1b**

(REVISED 3/2016) P&M10.1b