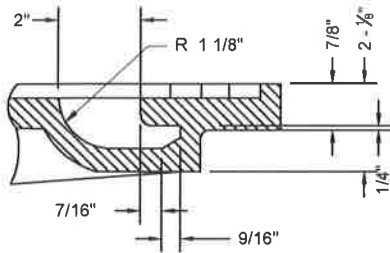
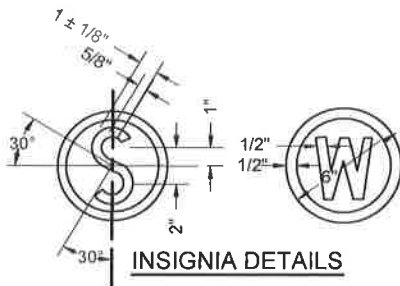


APPLICABLE STOCK NOS.

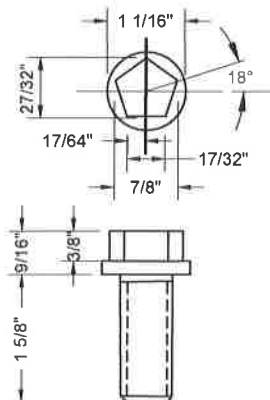
5680-9026-0 5680-9029-4  
5680-9051-8 5680-9060-9



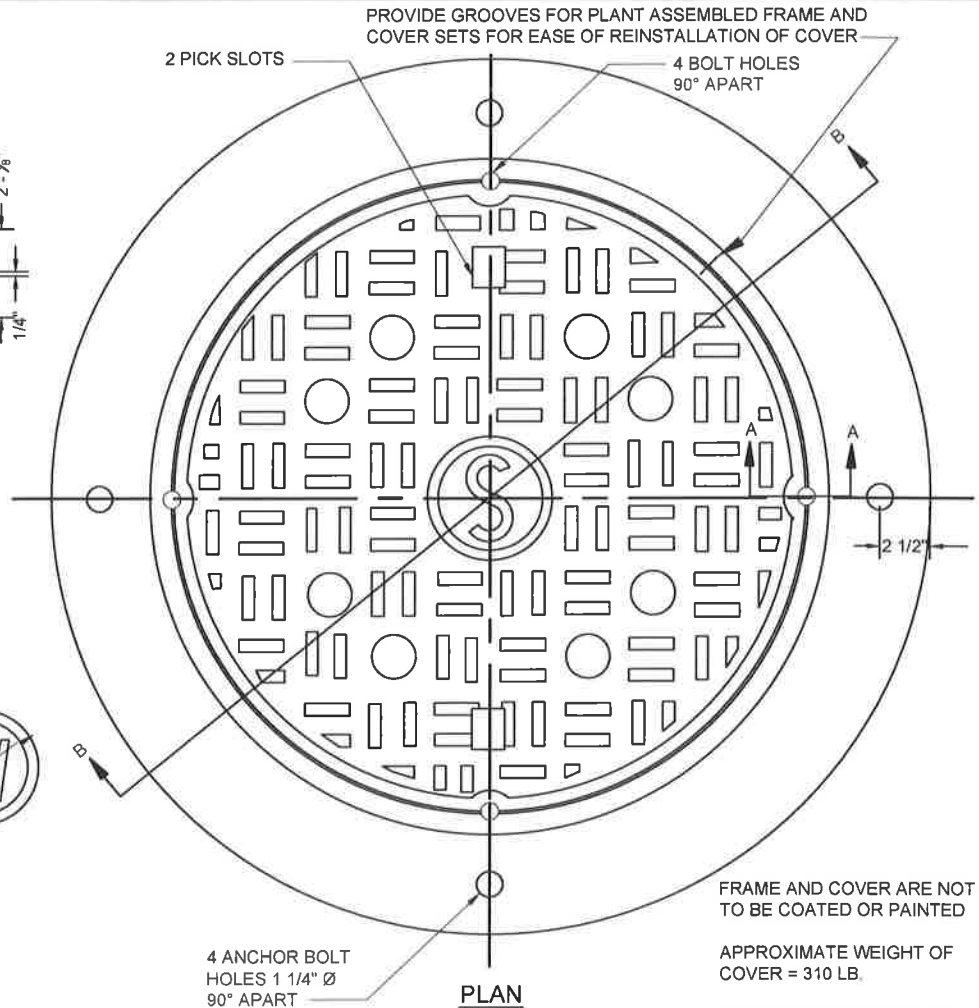
PICKHOLE DETAIL



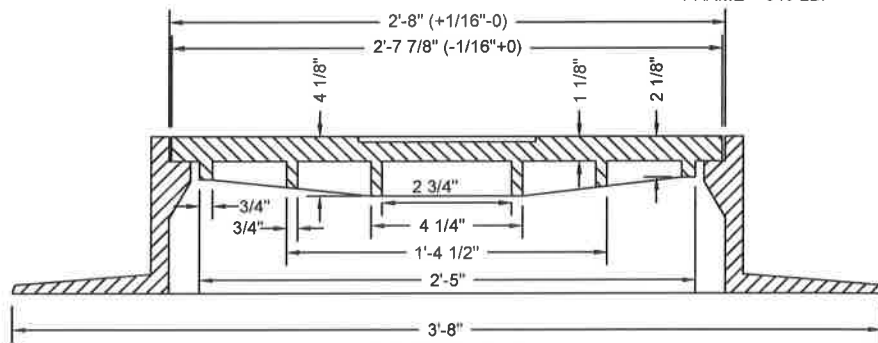
INSIGNIA DETAILS



STAINLESS STEEL  
LOCK BOLT  
AISI TYPE 304  
STAINLESS STEEL



PLAN



SECTION B-B

SEE DETAIL P&M 10.1a  
FOR CONTINUATION

MATERIAL SPECIFICATION:  
GRAY IRON ASTM A48 CL35B

CASTINGS SHALL CONFORM TO AND BE MANUFACTURED  
IN ACCORDANCE WITH THE REQUIREMENTS OF AASHTO  
STD M306, LATEST REVISION

REFERENCE WSSC DWG NO. 721471Y, LATEST REVISION 1-29-81

WASHINGTON  
SUBURBAN  
SANITARY  
COMMISSION

REVISIONS:

APPROVED:

MATERIAL AND SERVICES GROUP LEADER

PROCUREMENT AND MANUFACTURING DETAIL

LOCKING TYPE-WATERTIGHT  
30" MANHOLE FRAME & COVER

P&M  
10.1b

(REVISED 3/2016) P&M10.1b