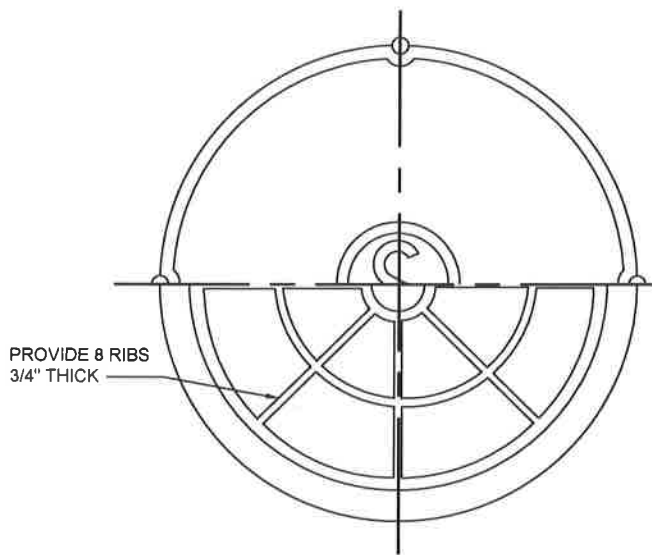
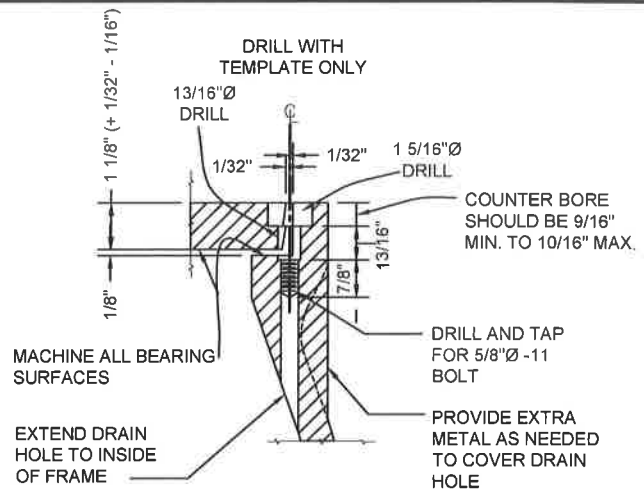


APPLICABLE STOCK NOS.

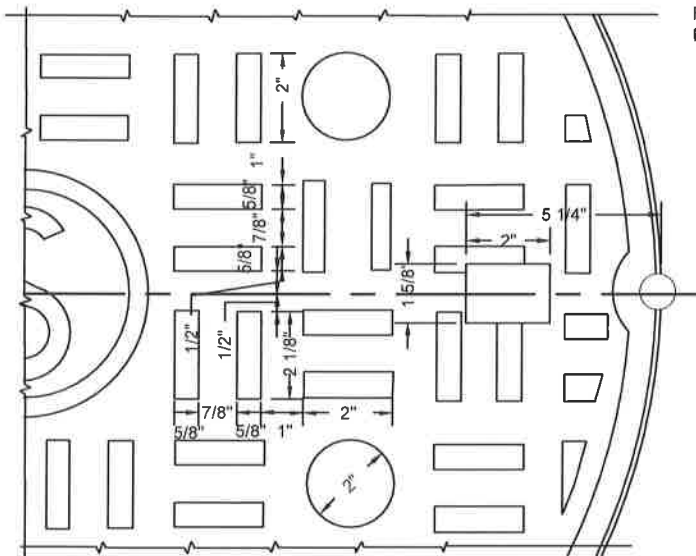
5680-9026-0  
5680-9051-8  
5680-9029-4  
5680-9060-9



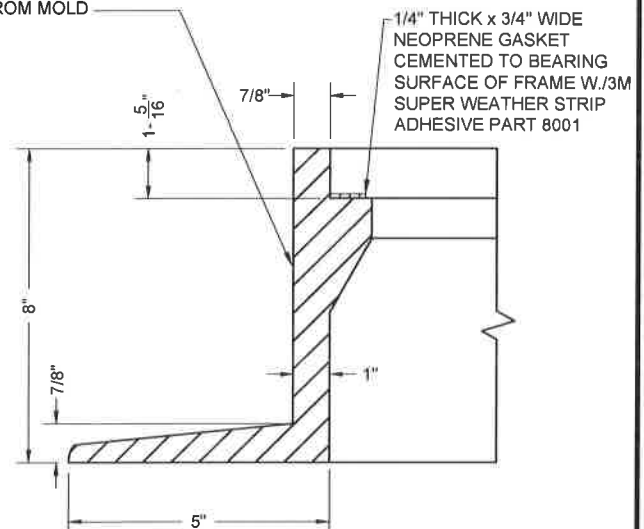
BOTTOM VIEW



SECTION A-A



PROVIDE APPROPRIATE  
DRAFT TO ENABLE  
REMOVAL OF PATTERN  
FROM MOLD



SECTION OF RING

MATERIAL SPECIFICATION:

GRAY IRON ASTM A48 CL35B

CASTINGS SHALL CONFORM TO AND BE MANUFACTURED  
IN ACCORDANCE WITH THE REQUIREMENTS OF AASHTO  
STD M306, LATEST REVISION

REFERENCE WSSC DWG NO. 721471Y, LATEST REVISION 1-29-81

SEE DETAIL P&M 10.1b  
FOR CONTINUATION

WASHINGTON  
SUBURBAN  
SANITARY  
COMMISSION

REVISIONS:

APPROVED:

*3/17/16*  
*[Signature]*  
MATERIAL AND SERVICES GROUP LEADER

PROCUREMENT AND MANUFACTURING DETAIL

LOCKING TYPE-WATERTIGHT  
30" MANHOLE FRAME & COVER

P&M  
10.1a