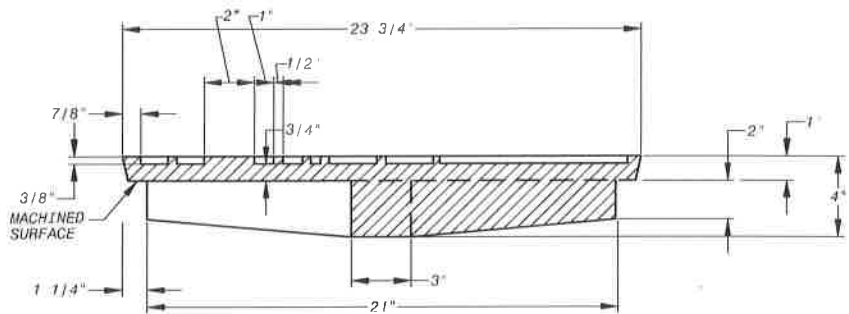
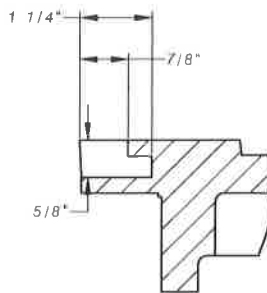
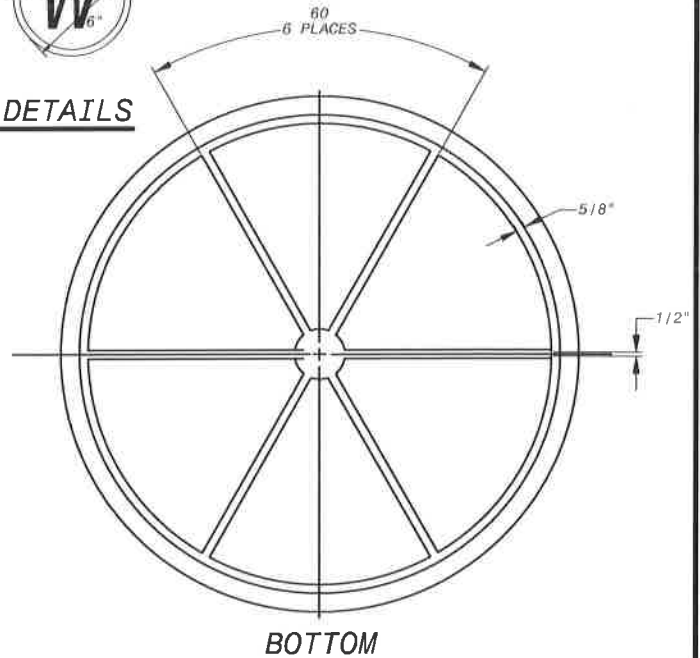
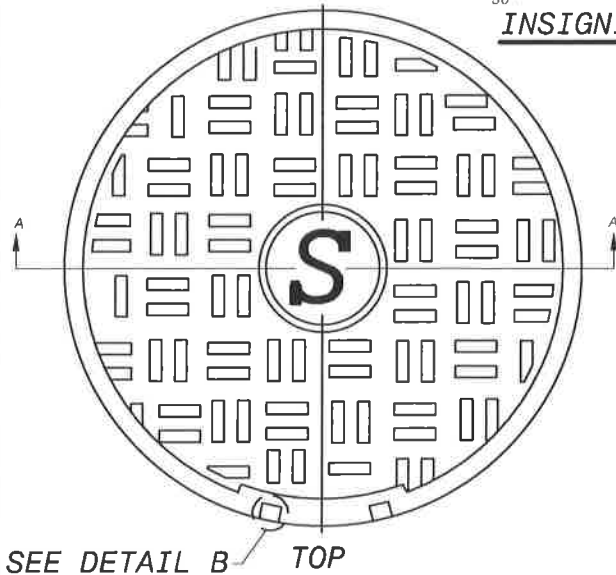
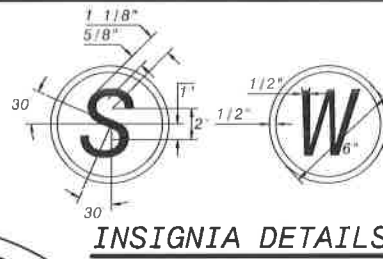


APPLICABLE STOCK NO.
5690-9004-7 (SEWER)



SECTION TO BE GRAY IRON CASTING,
ASTM A-48 CLASS NO. 35B

CASTING SHALL CONFORM TO AND BE MANUFACTURED
IN ACCORDANCE WITH THE REQUIREMENTS OF
AASHTO STD M306, LATEST REVISION

NOTE: COVER FOR USE ONLY WITH THE FOLLOWING:
- 1 1/2" ADJUSTING RING, WSSC SN 5680-9001-3
- 2" ADJUSTING RING, WSSC SN 5680-9002-1

* AT THE MANUFACTURER'S OPTION, IN PLACE OF 6 RIBS,
60° APART, 8 RIBS CAN BE PLACED 45° APART.

ALL DIMENSION ARE IN INCHES
UNLESS OTHERWISE SPECIFIED.

TOLERANCES: $\pm 1/16"$

WASHINGTON
SUBURBAN
SANITARY
COMMISSION

REVISIONS:

APPROVED:

3/17/16
[Signature]
MATERIAL AND SERVICES GROUP LEADER

PROCUREMENT AND MANUFACTURING DETAIL

22" MANHOLE ADJUSTING
RING COVER

P&M
6.2

(REVISED 3/2016) P&M6.2