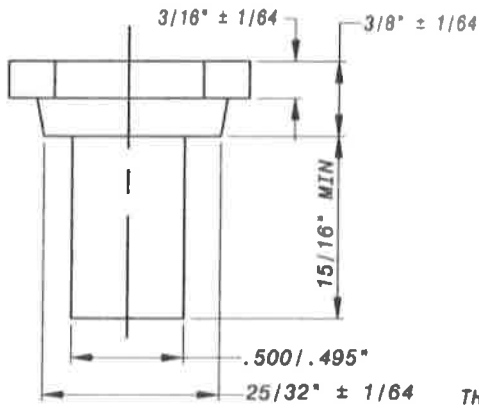
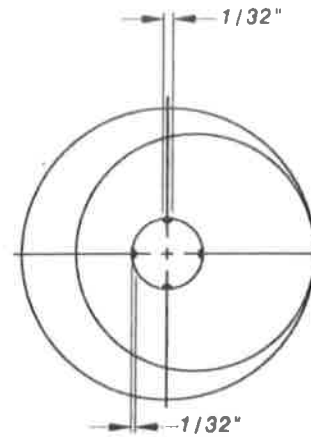


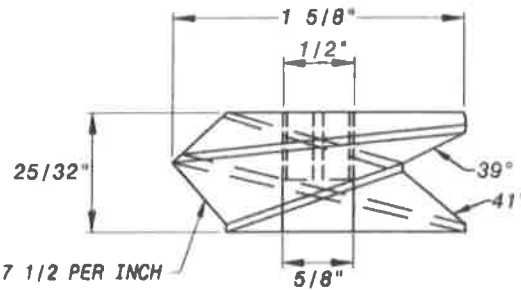
TOP VIEW
COPPER ALLOY



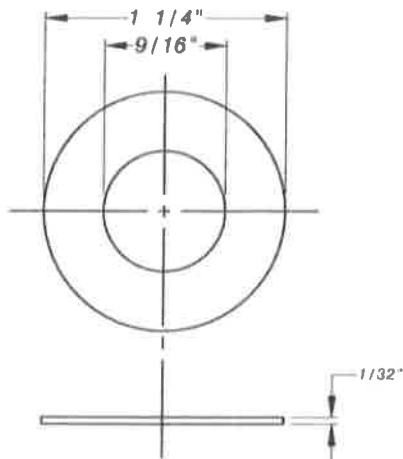
SIDE VIEW
PENTAGON HEAD BOLT



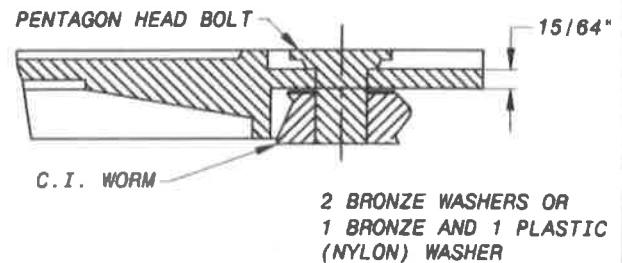
TOP VIEW



SIDE VIEW
CAST IRON WORM



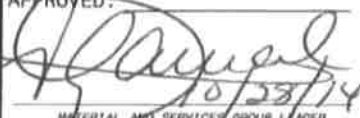
BRONZE OR PLASTIC WASHER



ASSEMBLED SECTION
OF LOCK

NOTES:

1. PENTAGON HEAD BOLT TO BE ATTACHED TO CAST IRON WORM BY MEANS OF 1/32" SPLINES CAST ON INTERIOR OF WORM. THE END OF THE BOLT SHALL BE SPLIT WITH A PUNCH, A SPLIT BOLT WILL NOT BE ACCEPTED.

WASHINGTON SUBURBAN SANITARY COMMISSION	REVISIONS: APPROVED:  10/23/14 MATERIAL AND SERVICE GROUP LEADER	PROCUREMENT AND MANUFACTURING DETAIL METER COVER PARTS	P&M 4.3
--	--	---	------------