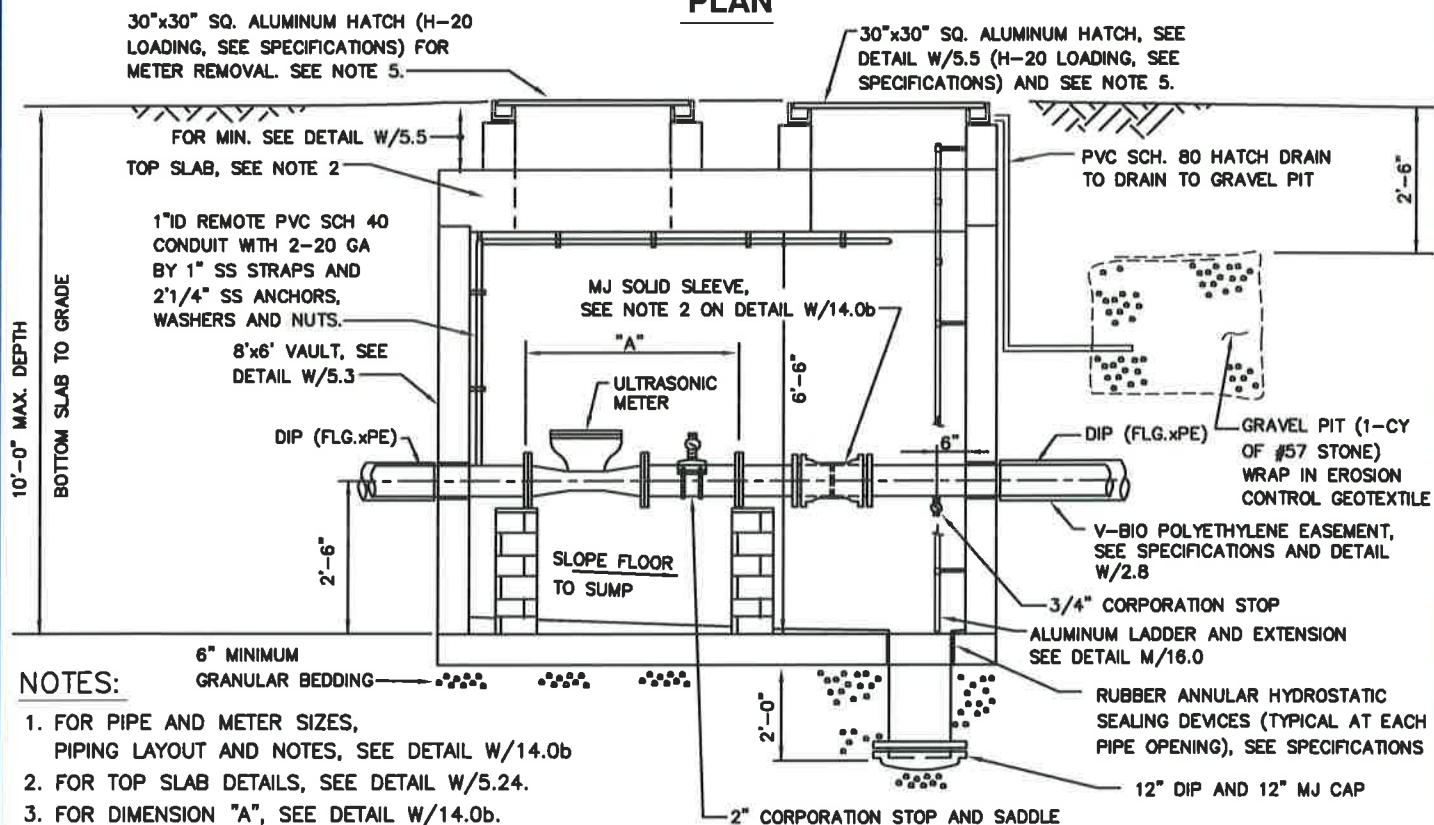


PLAN



NOTES:

1. FOR PIPE AND METER SIZES,
PIPING LAYOUT AND NOTES, SEE DETAIL W/14.0b
2. FOR TOP SLAB DETAILS, SEE DETAIL W/5.24.
3. FOR DIMENSION "A", SEE DETAIL W/14.0b.
4. FOR LOCATION OF BY-PASS PIPING, SEE DETAIL W/14.0b.
5. IF VAULT LOCATION IS LOCATED IN TRAFFIC AREA, USE 30" DIA. FRAME AND COVER
AND REMOTE READING DEVICE, FOR LOCATION SEE W/14.0a.
6. FOR REMOTE READING DEVICE, SEE DETAIL W/5.0e

ELEVATION

WASHINGTON
SUBURBAN
SANITARY
COMMISSION

APPROVED:

Chief Engineer

STANDARD DETAIL

4-INCH, 6-INCH AND 8-INCH
ULTRASONIC METER VAULT

W
14.0