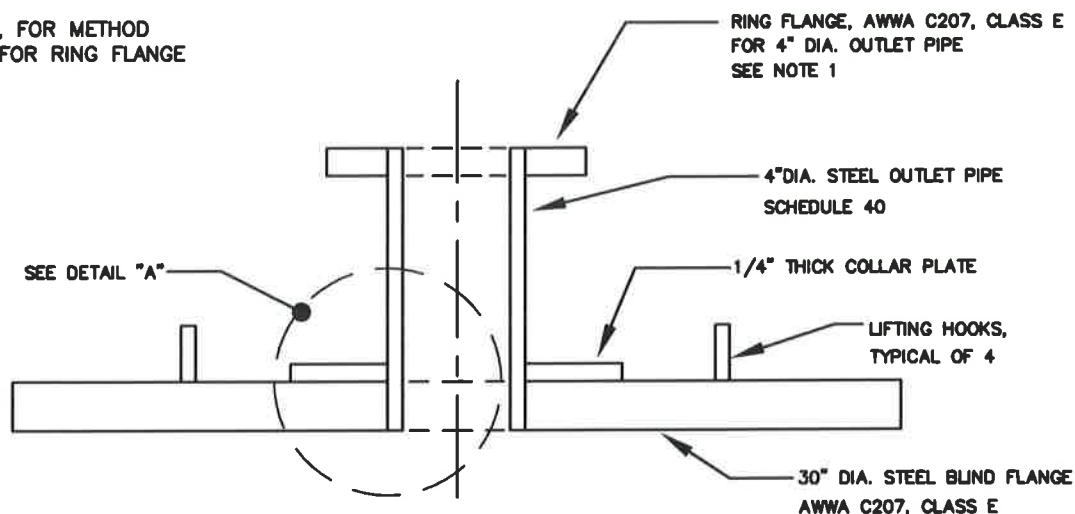
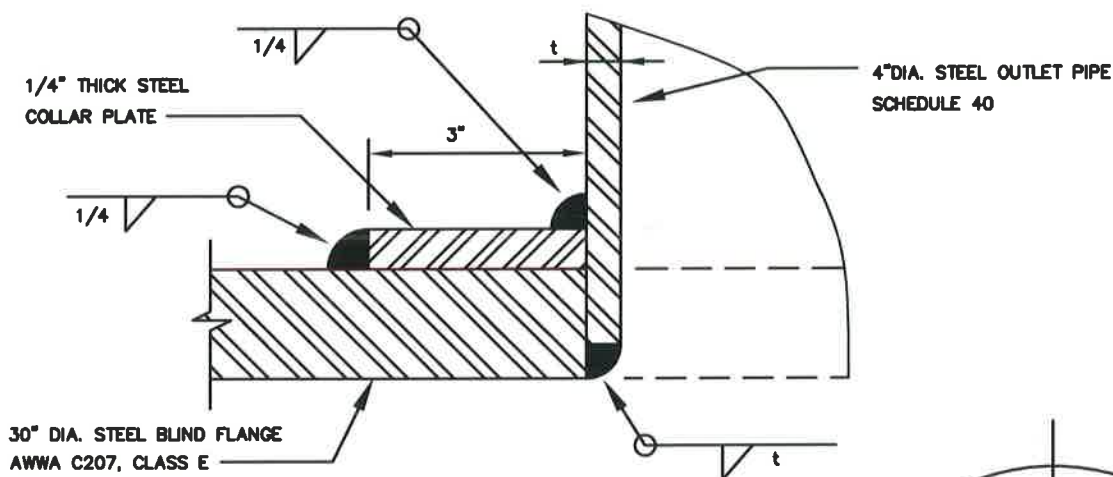


NOTE:

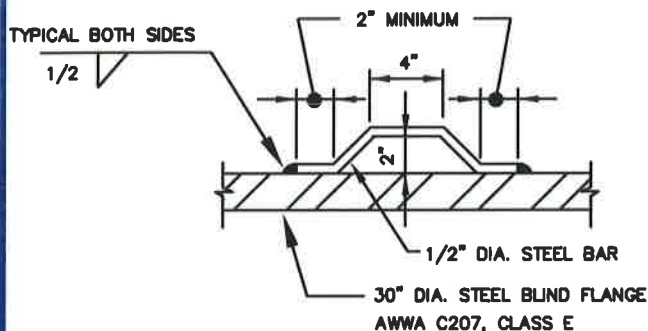
1. SEE AWWA C207, FOR METHOD OF ATTACHMENT FOR RING FLANGE TO OUTLET PIPE.



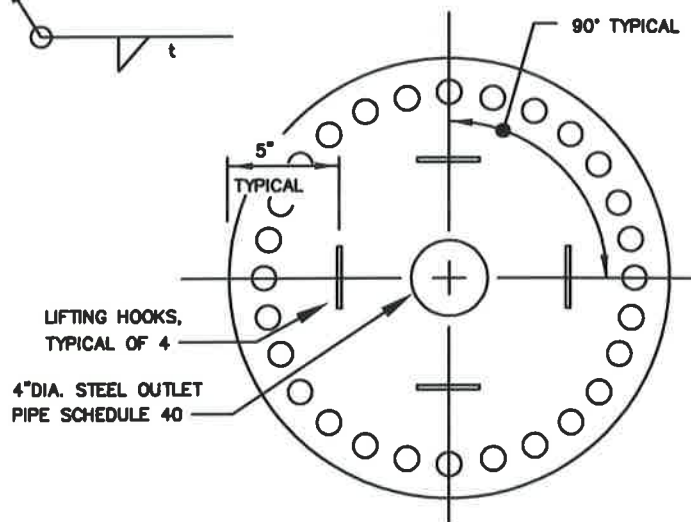
DETAIL OF ENTRY PORT BLIND FLANGE WITH 4" OUTLET



DETAIL "A"



LIFTING HOOK DETAIL



LIFTING HOOK LOCATION DETAIL

WASHINGTON
SUBURBAN
SANITARY
COMMISSION

APPROVED: 9/29/16

Chief Engineer

STANDARD DETAIL
BLIND FLANGE DETAILS
FOR
ENTRY PORT VAULTS

W
10.4