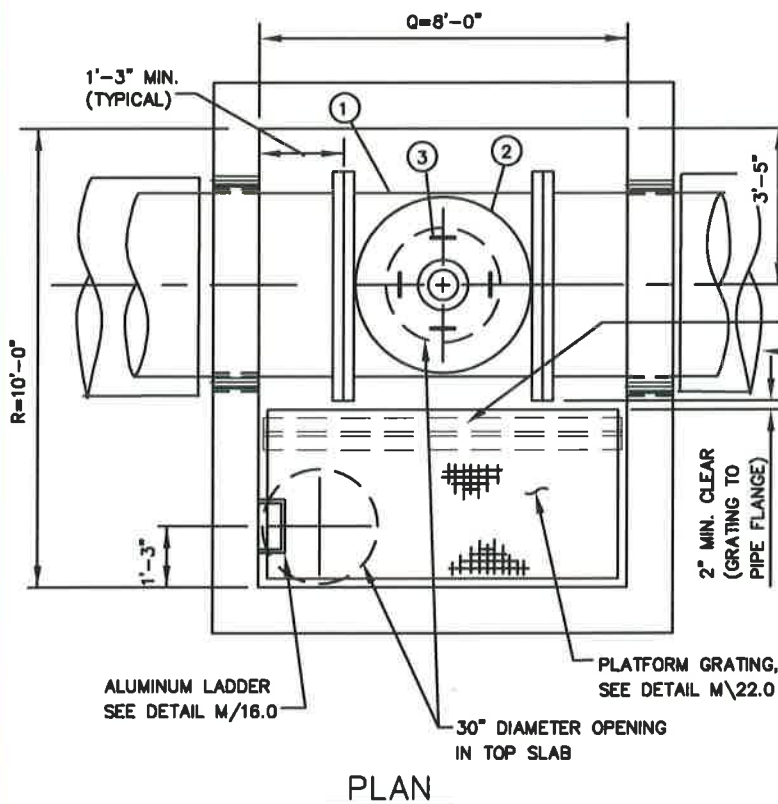


MATERIAL LIST

NO.	SIZE	DESCRIPTION	JOINT
1	-	TEE (30" OUTLET)	FLG
2	30"	STEEL BLIND FLANGE, AWWA C207, CLASS E WITH 4" OUTLET PIPE SEE DETAIL W/10.4	FLG
3	-	LIFTING HOOKS, SEE DETAIL W/10.4	-
4	4"	STEEL PIPE SCHEDULE 40, SEE DETAIL W/10.4	FLG
5	4"	GATE VALVE WITH HANDWHEEL CLASS 125	FLG
6	4"	STEEL BLIND FLANGE, AWWA C207, CLASS E	FLG



ALUMINUM BEAM, SEE DETAIL M22.0

V-BIO POLYETHYLENE ENCASEMENT, SEE
SPECIFICATIONS AND NOTE 3.

NOTE:

1. CONTRACTOR MAY USE PRECAST VAULT.
SEE SPECIFICATIONS FOR SUBMITTAL
REQUIREMENTS
2. PROVIDE RUBBER ANNULAR HYDROSTATIC
SEALING DEVICES FOR PIPE THROUGH WALL
CONNECTIONS, SEE SPECIFICATIONS.
3. SEE DETAIL W/2.8 FOR V-BIO POLYETHYLENE
ENCASEMENT AT CONCRETE INTERFACE.

WASHINGTON
SUBURBAN
SANITARY
COMMISSION

APPROVED:

9/29/16

Chief Engineer

STANDARD DETAIL

ENTRY PORT VAULT
FOR 36" TO 48"
DIAMETER PIPES

W
10.3