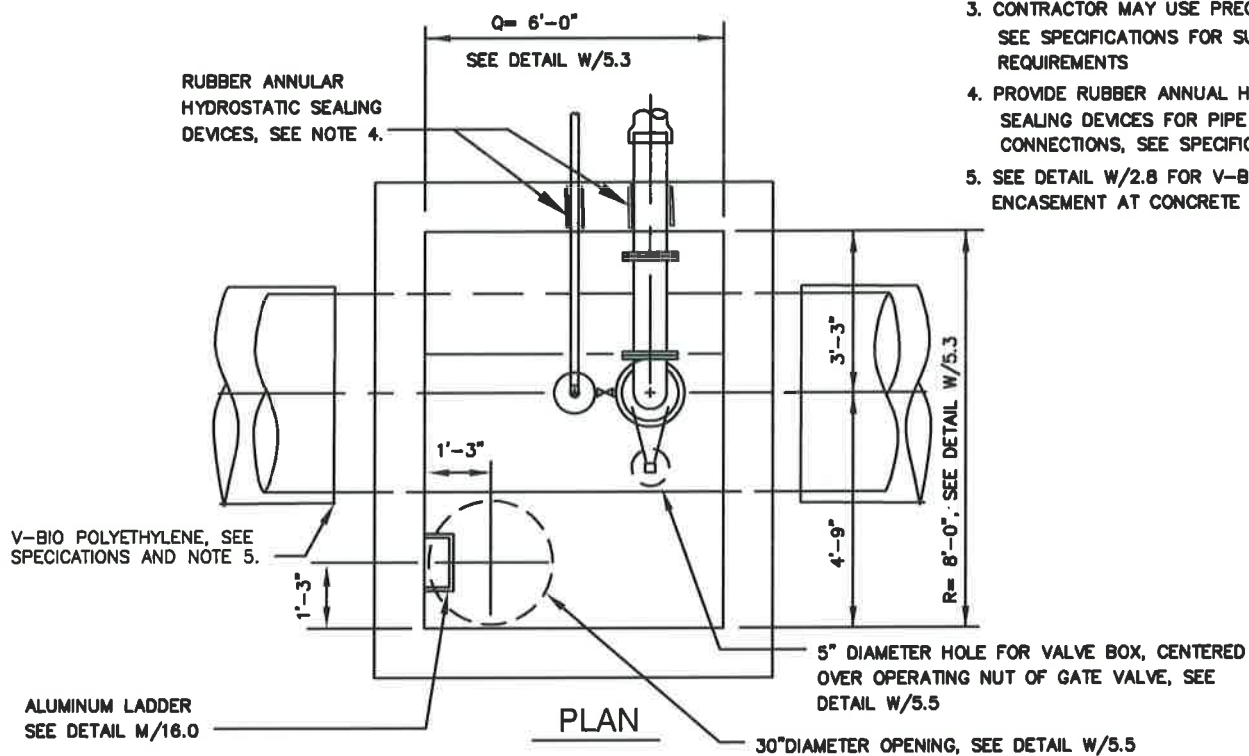



#### NOTES:

1. FOR VALVE AND PIPING SIZES AND LAYOUT, SEE DETAIL W/10.1
2. SEE DETAILS W/5.2 AND W/5.3 ADDITIONAL INFORMATION.
3. CONTRACTOR MAY USE PRECAST VAULT. SEE SPECIFICATIONS FOR SUBMITTAL REQUIREMENTS
4. PROVIDE RUBBER ANNUAL HYDROSTATIC SEALING DEVICES FOR PIPE THROUGH WALL CONNECTIONS, SEE SPECIFICATIONS.
5. SEE DETAIL W/2.8 FOR V-BIO POLYETHYLENE ENCASEMENT AT CONCRETE INTERFACE.



WASHINGTON  
SUBURBAN  
SANITARY  
COMMISSION

APPROVED:

9/29/16  
  
Chief Engineer

STANDARD DETAIL

AIR/VACUUM VALVE VAULT  
ON 30" DIAMETER  
AND LARGER PIPES

W  
10.2