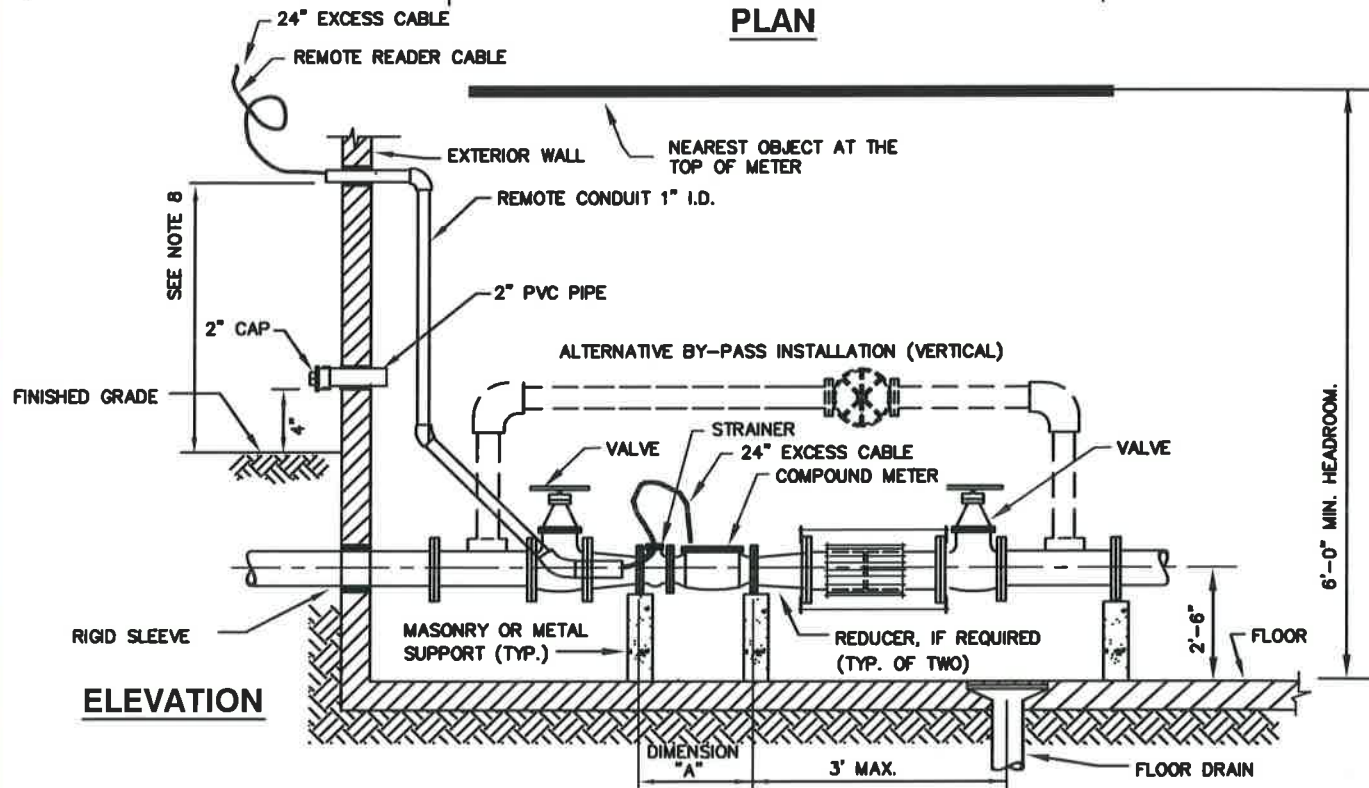


PLAN



ELEVATION

BY-PIPE SIZE	
COMPOUND METER SIZE	BY-PASS PIPE SIZE
3"	2"
4"	2"
6"	4"

"A" DIMENSION	
COMPOUND METER SIZE	"A" (LENGTH OF METER AND STRAINER)
3"	24"
4"	29"
6"	36.5"

NOTE:

1. FLANGE BOLTS SHALL BE READILY ACCESSIBLE.
2. METER TO BE SET HORIZONTALLY.
3. FOR METER SETTING WHEN METER ROOM IS NOT ADJACENT TO EXTERIOR BUILDING WALLS, SEE DETAIL W/7.5
4. TURBULENCE COMPENSATOR MINIMUM 5 PIPE DIAMETERS INLET AND OUTLET.
5. METER NOT TO BE SET WITHIN 10' OF ELECTRICAL DISTRIBUTION EQUIPMENT.
6. REMOTE READER CONDUIT - NO BENDS GREATER THAN 45°, EXCEPT AS SHOWN.
7. SECURE REMOTE READER CONDUIT TO WATER SERVICE LINE.
8. LOCATE EXIT POINT FOR REMOTE READING DEVICE 2-1/2' TO 4' ABOVE FINISHED GRADE AND ON SAME WALL AS ELECTRIC METER. IF ELECTRIC METER IS LOCATED AT REAR OF BUILDING. LOCATE EXIT POINT IN FRONT OF BUILDING. REMOTE READER CABLE TO BE SUPPLIED BY WSSC.

WASHINGTON
SUBURBAN
SANITARY
COMMISSION

APPROVED:

9/28/16

Chief Engineer

STANDARD DETAIL
3-INCH, 4-INCH AND 6-INCH
INDOOR COMPOUND METER
WHEN METER ROOM IS ADJACENT
TO EXTERIOR BUILDING WALLS

W
7.4