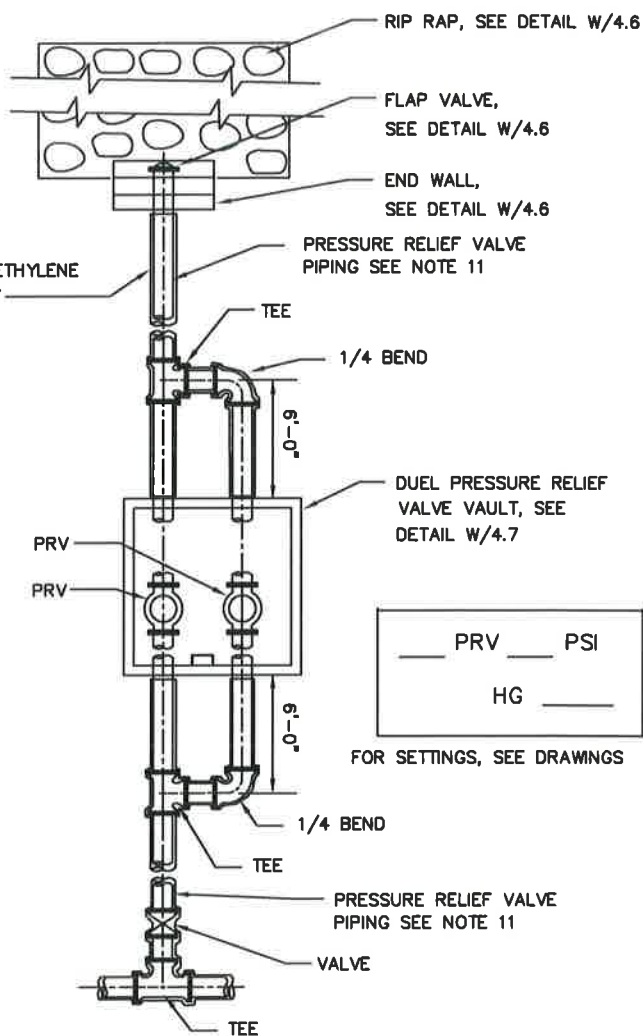


**TYPICAL PIPING LAYOUT
FOR DETAIL W/4.5**



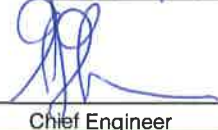
**TYPICAL PIPING LAYOUT
FOR DETAIL W/4.7**

NOTES:

1. SIZE OF PRESSURE RELIEF VALVE AND PIPING SHALL BE 6" OR SMALLER, SEE DRAWINGS.
2. PROVIDE M.J. SOLID SLEEVE WHERE SHOWN WITH WEDGE ACTION RESTRAINER GLAND, SEE SPECIFICATIONS. TOLERANCE BETWEEN PIPE ENDS SHALL NOT EXCEED 1/2". DO NOT USE PIPE SPACERS, SEE SPECIFICATIONS.
3. ONLY DUCTILE IRON PIPE AND FITTINGS.
4. RESTRAIN ALL JOINTS, SEE SPECIFICATIONS AND BLOCK ALL FITTINGS.
5. PROVIDE EXTENSION STEMS AND VALVE BOXES FOR ALL BURIED VALVES, SEE DETAIL W/2.2.
6. THIS VALVE VAULT IS NOT FOR ELECTRICALLY CONTROLLED OR OPERATED VALVES.
7. STANDARD PRESSURE RELIEF VAULT IS BASED ON THE ASSUMPTIONS AND LIMITATIONS. IF THESE CONDITIONS ARE NOT MET, SPECIAL DESIGN IS REQUIRED.
 - a). ELEVATION OF GROUND WATER IS ASSUMED TO BE 2'-0" BELOW BOTTOM SLAB ELEVATION.
 - b). LOCATION OF VAULT IS ASSUMED TO BE LOCATED OUTSIDE THE ROAD RIGHT OF WAY.
8. PROVIDE LIFTING HOOKS OVER PRESSURE RELIEF VALVE WHEN HATCH IS NOT PROVIDED OVER THE PRESSURE RELIEF VALVE.
9. V-BIO POLYETHYLENE ENCASEMENT FOR ALL DUCTILE IRON PIPE AND FITTINGS. SEE DETAIL W/2.8 AT CONCRETE INTERFACE.
10. PROVIDE RUBBER ANNULAR HYDROSTATIC SEALING DEVICES FOR ALL PIPE THROUGH WALL CONNECTIONS, SEE SPECIFICATIONS.
11. SEE DRAWINGS FOR PLAN AND PROFILE OF PRESSURE RELIEF PIPING.
12. DO NOT LOCATE VAULT IN PAVED AREA.

WASHINGTON
SUBURBAN
SANITARY
COMMISSION

APPROVED: 9/28/16


Chief Engineer

STANDARD DETAIL

**PRESSURE RELIEF VALVE
VAULT PIPING PLAN**

W
4.8