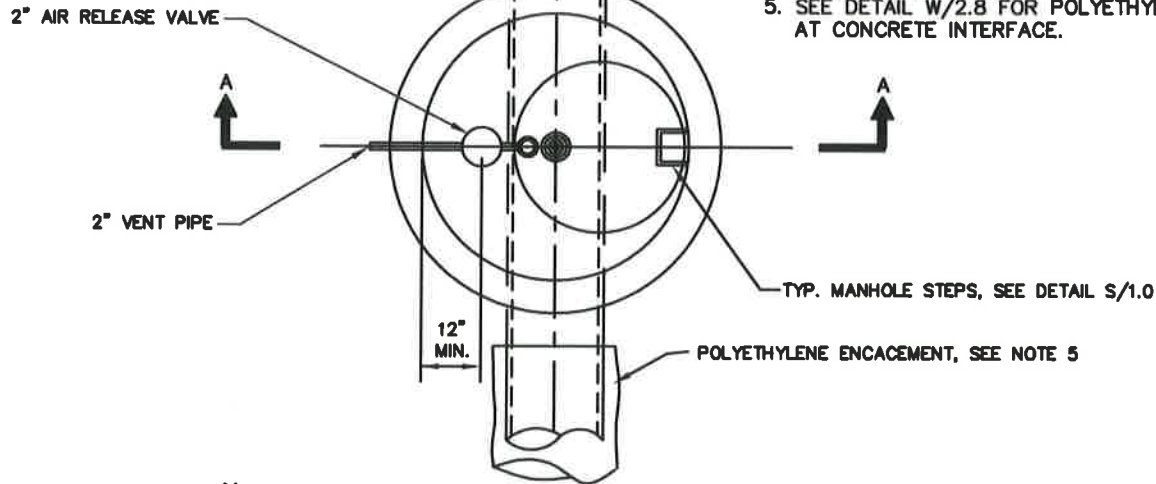
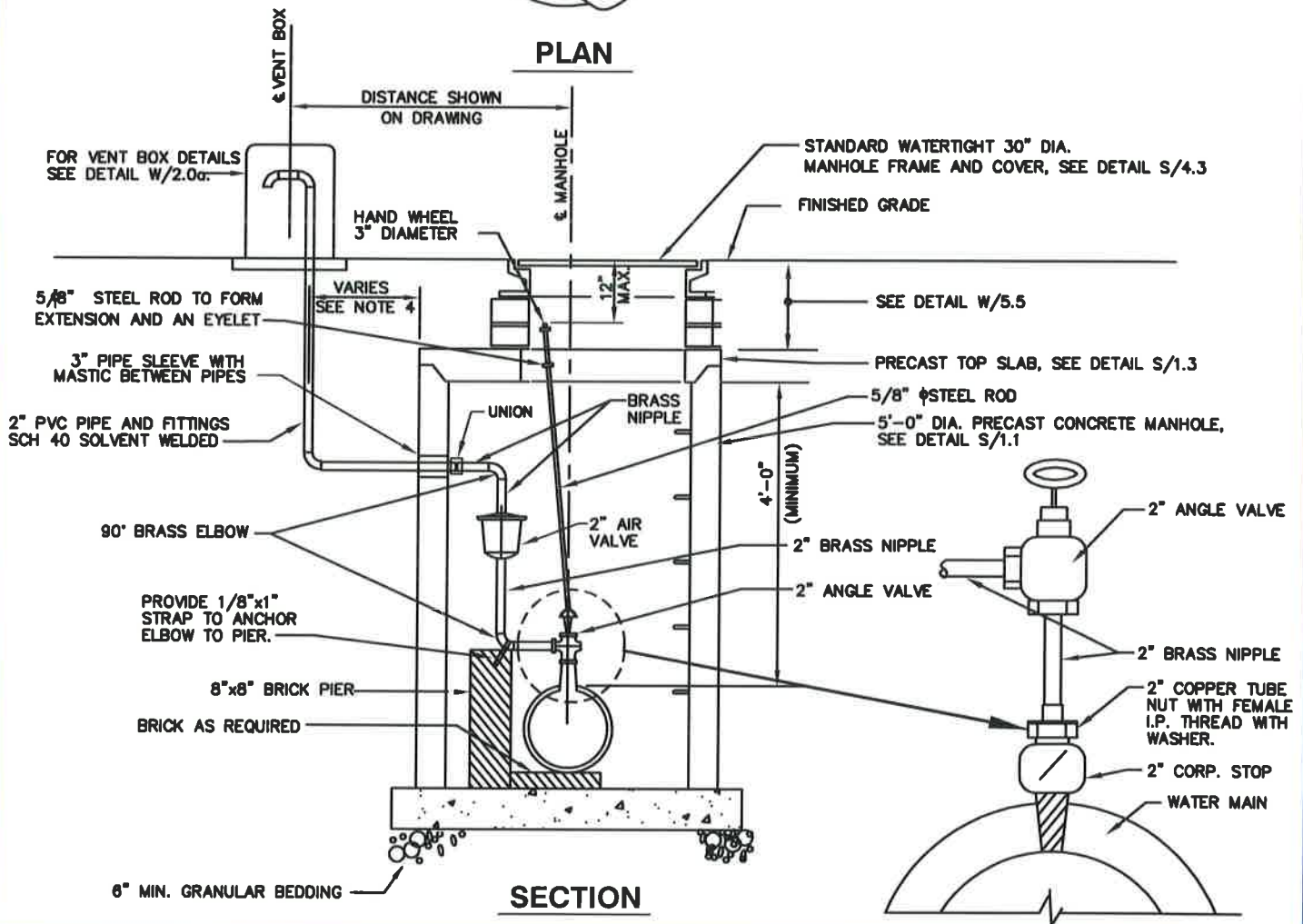


NOTES:

1. ALL FITTINGS BELOW AIR VALVE TO BE HEAVY DUTY THREADED UNPOLISHED BRASS UNLESS NOTED OTHERWISE.
2. PIPE TAP & ANGLE VALVE TO BE SAME SIZE AS AIR VALVE (2").
3. PROVIDE GRANULAR BEDDING UNDER MANHOLE PER DETAIL S/1.0.
4. VENT BOX TO BE INSTALLED OUTSIDE OF TRAVELED AREAS.
5. SEE DETAIL W/2.8 FOR POLYETHYLENE ENCASEMENT AT CONCRETE INTERFACE.



PLAN



WASHINGTON
SUBURBAN
SANITARY
COMMISSION

APPROVED:

9/28/16

[Signature]

Chief Engineer

STANDARD DETAIL

2-INCH AIR VALVE IN MANHOLE
FOR 24-INCH DIAMETER AND
SMALLER PIPELINES

W
2.0