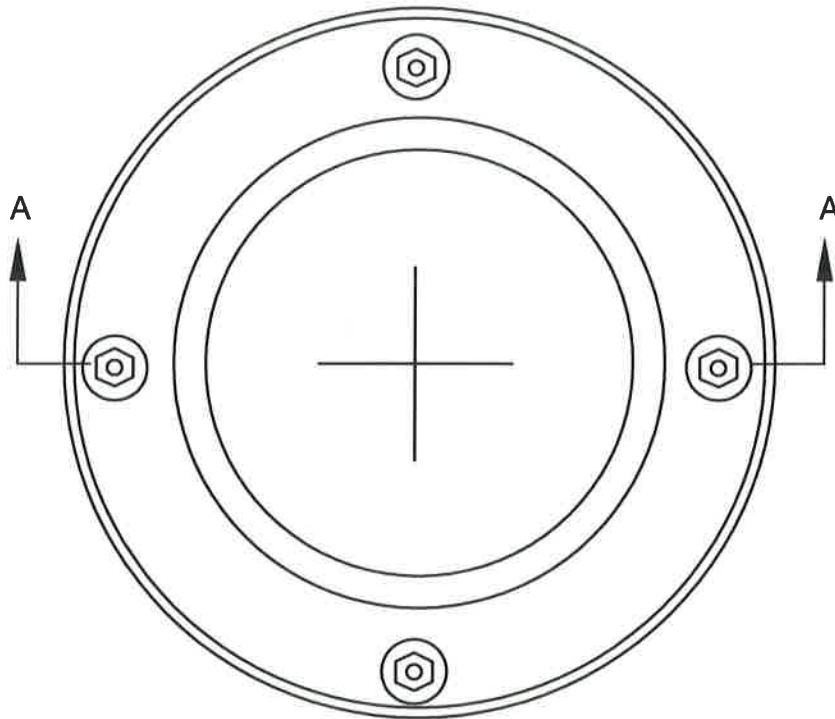
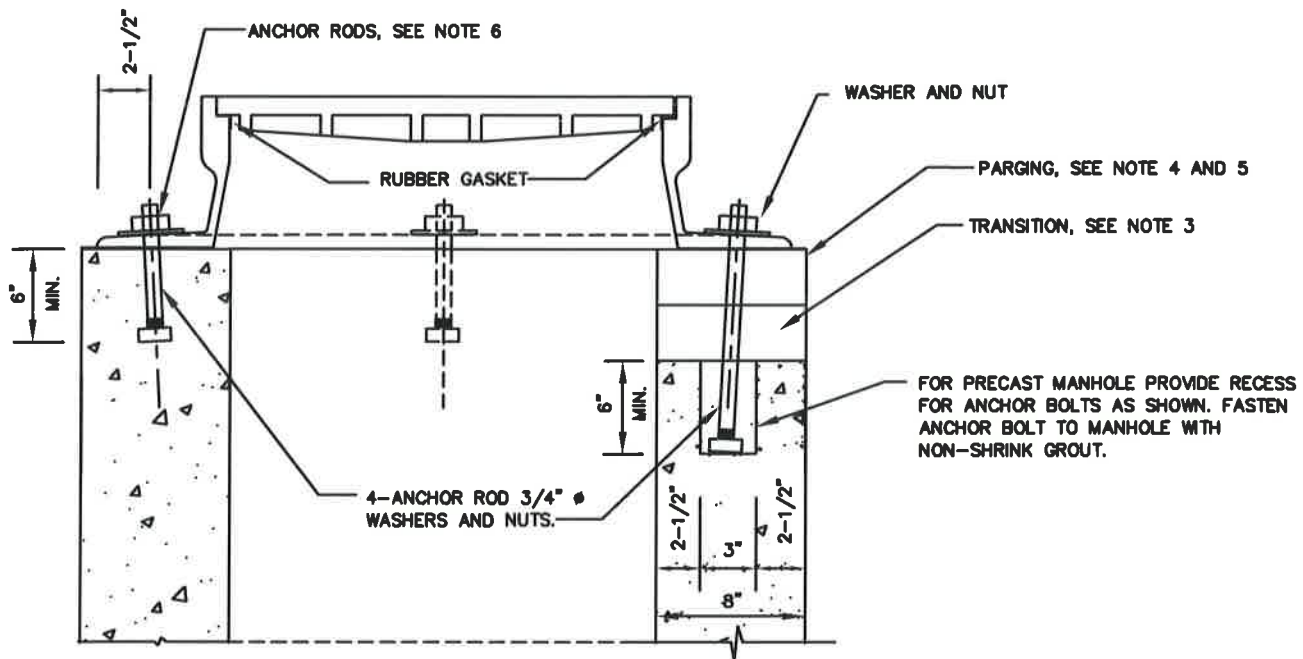


MANHOLE FRAME AND COVER NOTES:

1. ADJUST MANHOLE FRAME AND COVER WITH A TOLERANCE OF $1/8"$ TO THE PROPER GRADE, CROSS-SLOPE, AND ELEVATION AS NOTED ON THE DRAWINGS.
2. WHEN MANHOLE FRAME AND COVER ARE DESIGNATED TO BE BUILT ABOVE EXISTING GRADE, GRADE RINGS ARE NOT REQUIRED.
3. HEIGHT FOR BRICK TRANSITION MINIMUM $4"$ TO MAXIMUM $18"$.
4. PARGE TOP AND EXTERIOR OF BRICK TRANSITION. EXTEND PARGING $6"$ ON PRECAST SECTION OF MANHOLE.
5. AFTER SETTING MANHOLE FRAME AND COVER, APPLY TWO COATS OF ASPHALT BASED WATER PROOFING FROM FRAME AND COVER TO $2"$ BEYOND PARGING ON PRECAST SECTION OF MANHOLE.
6. FIELD CUT ENDS OF ANCHOR ROD TO MAXIMUM $1"$ ABOVE TOP OF NUT. ROUGH EDGES SHALL BE GROUND SMOOTH.



PLAN



SECTION A-A

WASHINGTON
SUBURBAN
SANITARY
COMMISSION

APPROVED:

9/29/16

Chief Engineer

STANDARD DETAIL
ANCHORING
30-INCH AND 36-INCH
MANHOLE FRAME AND
COVER TO MANHOLE WALL

S
4.3