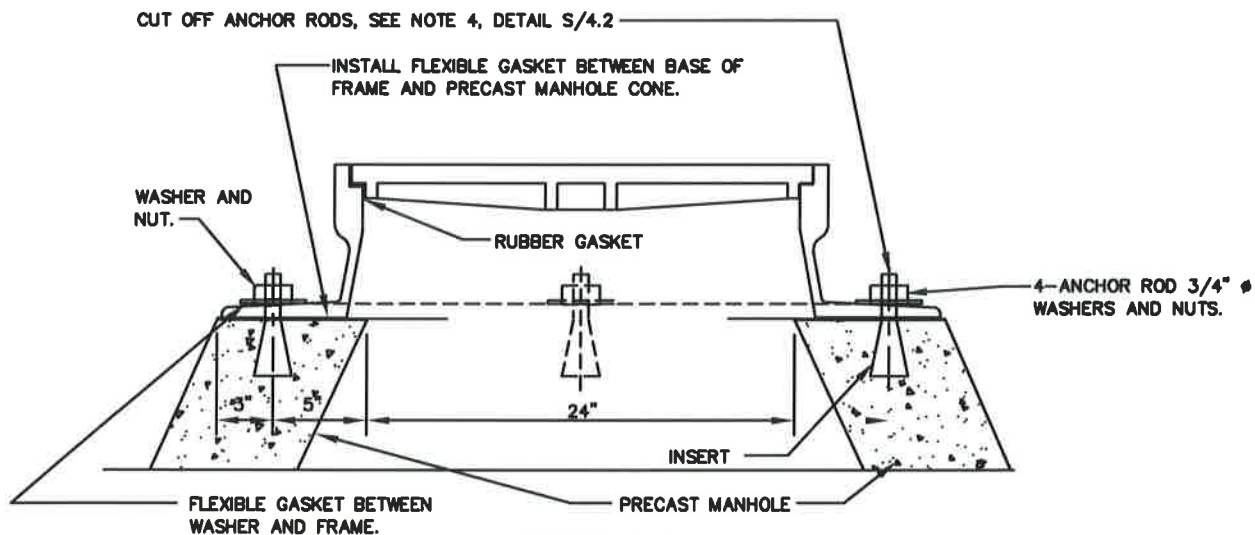


PLAN

NOTES:

1. MOUNT FRAME/COVER ON MANHOLE CONE WITHOUT GRADE RING TRANSITION, AS SHOWN. TOP OF FRAME AND COVER SHALL BE SET 12" BELOW FINAL RIM ELEVATION SHOWN ON THE DRAWINGS.
2. IF SLOTTED INSERTS ARE USED DO NOT FILL WITH MORTAR.



SECTION A-A

WASHINGTON
SUBURBAN
SANITARY
COMMISSION

APPROVED: _____

9/29/16

[Signature]

Chief Engineer

STANDARD DETAIL

INTERIM SETTING ANCHORING
24-INCH WATERTIGHT FRAME
& COVER TO MH CONE

S
4.2a