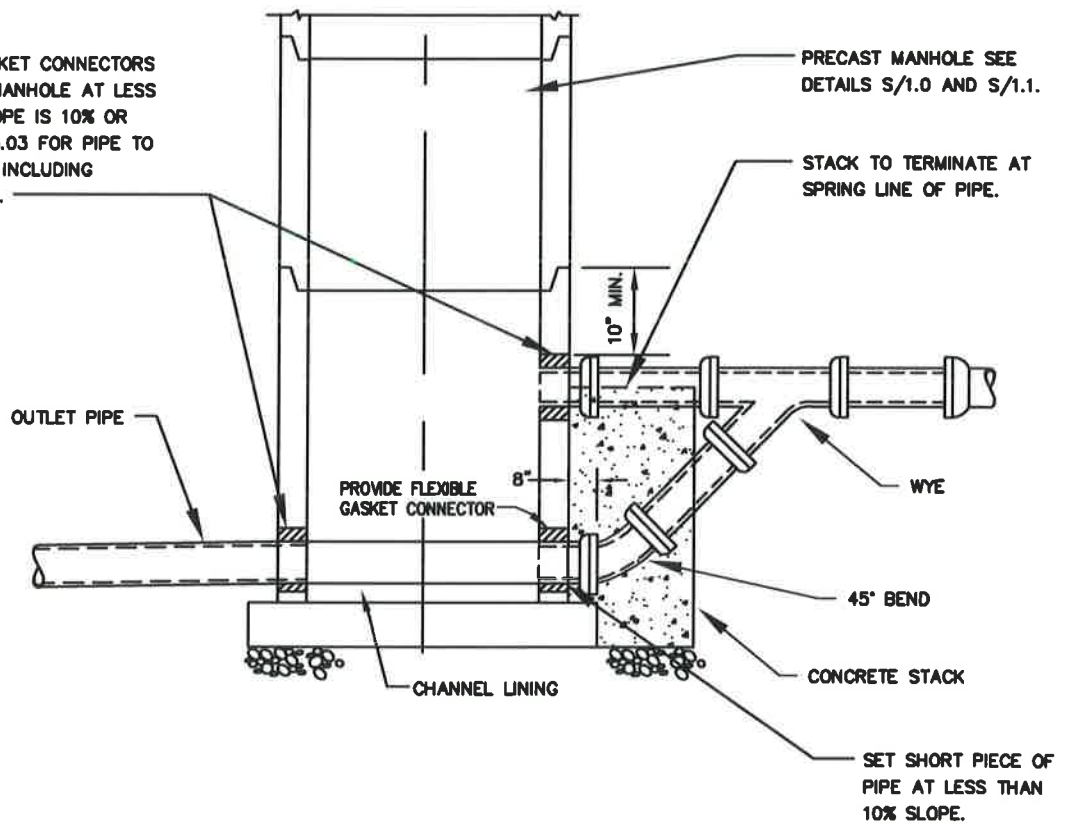


PLAN

PROVIDE FLEXIBLE GASKET CONNECTORS FOR PIPES ENTERING MANHOLE AT LESS THAN 10% IF PIPE SLOPE IS 10% OR MORE, SEE DETAIL S/3.03 FOR PIPE TO MANHOLE CONNECTION INCLUDING GROUT AND BENTONITE.



SECTION "A-A"

NOTES:

1. USE THIS DETAIL WHEN VERTICAL DROP BETWEEN INVERTS OF PIPE AND MANHOLE ARE BETWEEN 2'-2" AND 3'-9". FOR DROP GREATER THAN 3'-9" SEE DETAIL S/3.1a.

WASHINGTON  
SUBURBAN  
SANITARY  
COMMISSION

APPROVED:

9/29/16  
  
Chief Engineer

STANDARD DETAIL

DROP MANHOLE  
TYPE "A" DROP  
FOR PIPES 12-INCH AND SMALLER

S  
3.1