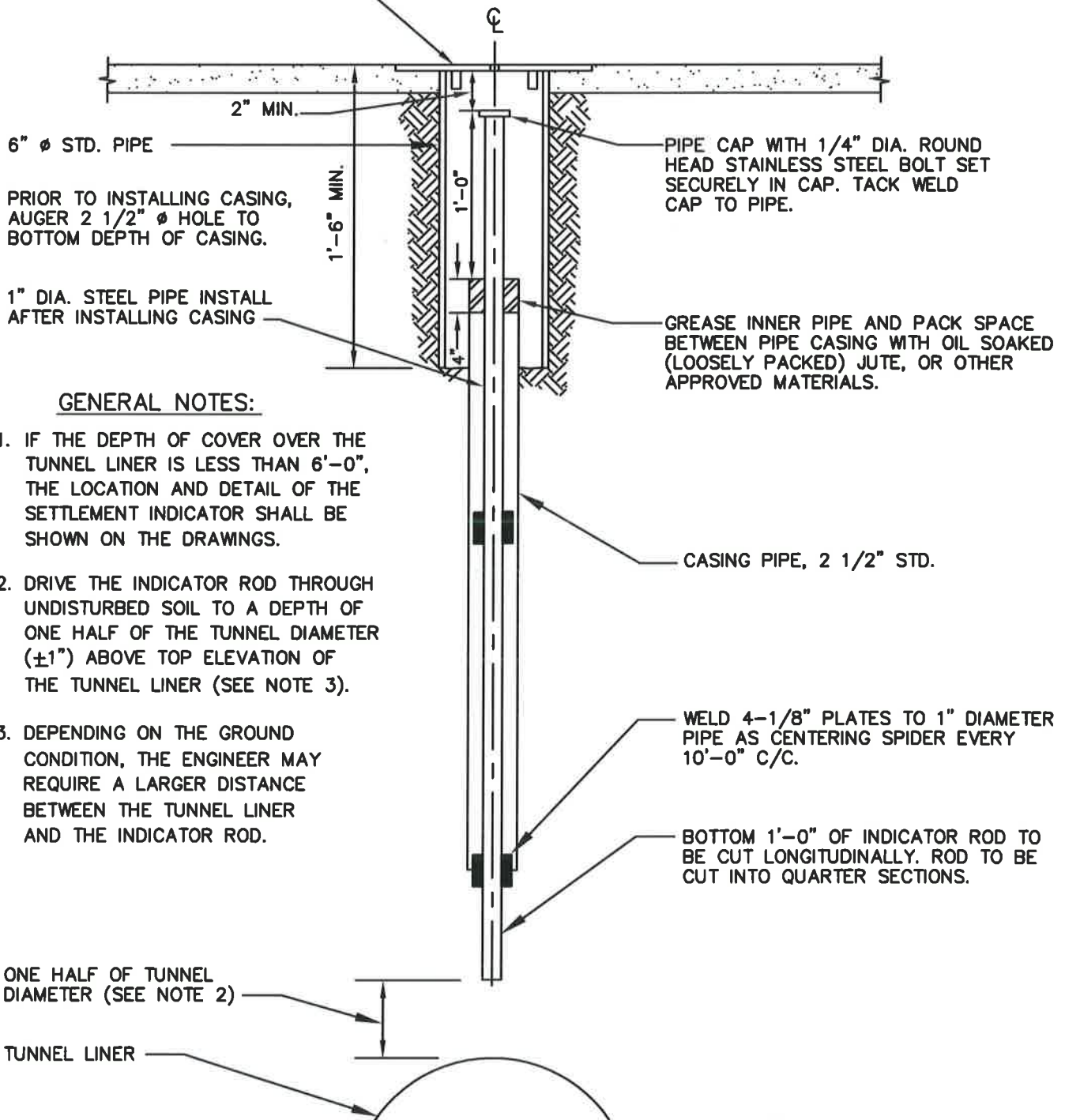


8" DIA. x 1/4" THICK STEEL PLATE WITH 3/4" DIA. HOLE IN THE CENTER. WELD 3 - 2"x1"x1/2" LUGS TO THE PLATE AS A CENTERING DEVICE. SET COVER ASSEMBLY FLUSH WITH TOP SURFACE.



GENERAL NOTES:

1. IF THE DEPTH OF COVER OVER THE TUNNEL LINER IS LESS THAN 6'-0", THE LOCATION AND DETAIL OF THE SETTLEMENT INDICATOR SHALL BE SHOWN ON THE DRAWINGS.
2. DRIVE THE INDICATOR ROD THROUGH UNDISTURBED SOIL TO A DEPTH OF ONE HALF OF THE TUNNEL DIAMETER ($\pm 1"$) ABOVE TOP ELEVATION OF THE TUNNEL LINER (SEE NOTE 3).
3. DEPENDING ON THE GROUND CONDITION, THE ENGINEER MAY REQUIRE A LARGER DISTANCE BETWEEN THE TUNNEL LINER AND THE INDICATOR ROD.

CASING PIPE, 2 1/2" STD.

WELD 4-1/8" PLATES TO 1" DIAMETER PIPE AS CENTERING SPIDER EVERY 10'-0" C/C.

BOTTOM 1'-0" OF INDICATOR ROD TO BE CUT LONGITUDINALLY. ROD TO BE CUT INTO QUARTER SECTIONS.

ONE HALF OF TUNNEL DIAMETER (SEE NOTE 2)

TUNNEL LINER

WASHINGTON
SUBURBAN
SANITARY
COMMISSION

APPROVED:

8/18/16

Chief Engineer

STANDARD DETAIL

EARTH TUNNEL SUBSURFACE
SETTLEMENT INDICATOR

M
7.0