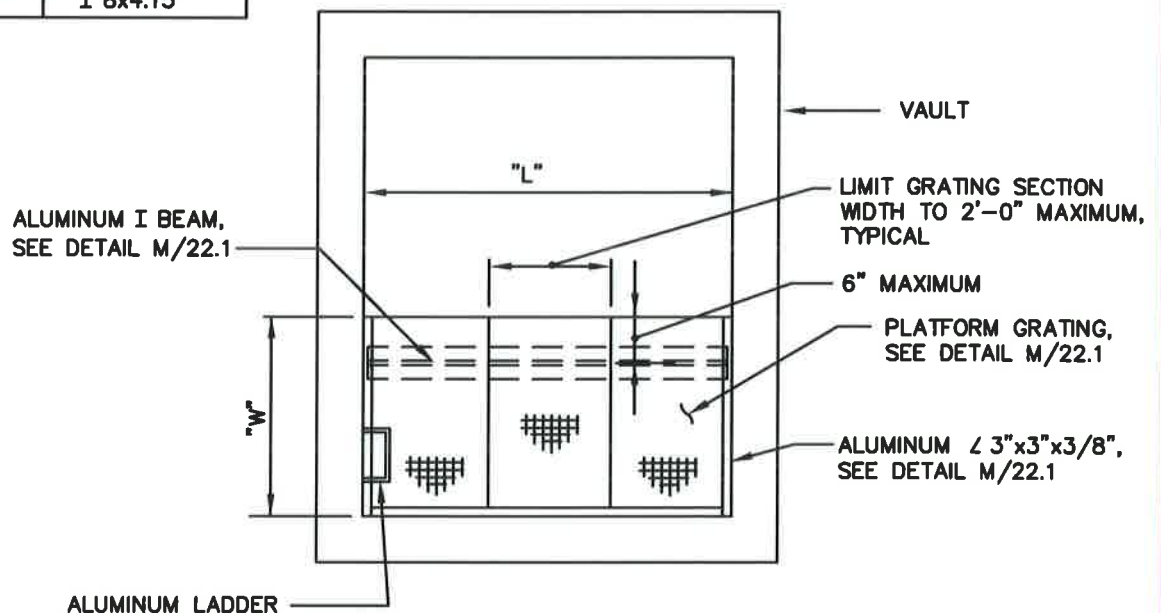


ALUMINUM I BEAM

"W" MAXIMUM	"L" MAXIMUM	I BEAM
6'-0"	16'-0"	I 10x8.64
4'-0"	12'-0"	I 8x5.8
3'-0"	10'-0"	I 8x4.15

SECTION



PLAN

GENERAL NOTES:

1. ALUMINUM STRUCTURAL MEMBERS SHALL BE ALUMINUM ALLOY 6061-T6 AND SHALL CONFORM TO ASTM B-308. ALUMINUM PLATES SHALL CONFORM TO ASTM B-209.
2. COAT ALUMINUM IN CONTACT WITH CONCRETE WITH AN EPOXY COATING SYSTEM, SEE SPECIFICATIONS.

WASHINGTON
SUBURBAN
SANITARY
COMMISSION

APPROVED:

8/15/16

Chief Engineer

STANDARD DETAIL
ALUMINUM
PLATFORM GRATING
FOR VAULTS

M
22.0