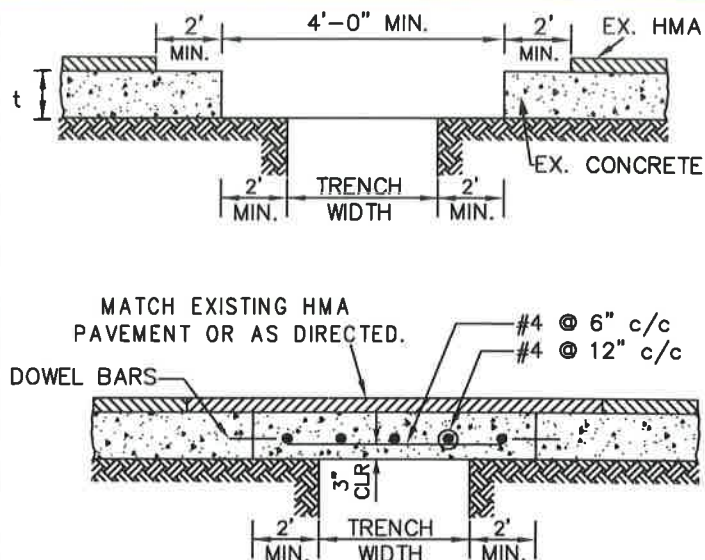
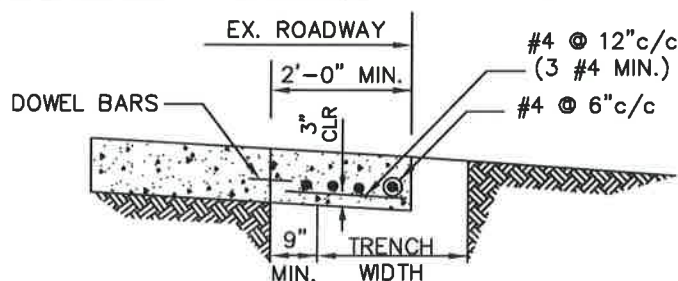


PORTLAND CEMENT CONCRETE PAVEMENT



HOT MIX ASPHALT (HMA) PAVEMENT  
OVER CONCRETE BASE



EDGE OF PAVING - REPAIR  
(TYPICAL)

NOTES.

1. MAKE ALL SAW CUTS PERPENDICULAR USING A DIAMOND SAW BLADE.
2. PRIOR TO PLACING CONCRETE, CLEAN AND WET EDGES OF CUTS. COMPACT AND DAMPEN SUBGRADE BEFORE PLACING REBARS.
3. ALL CONCRETE SHALL BE HIGH EARLY STRENGTH WITH MIN.  $f'_c=2500$  PSI @ 12 HOURS &  $f'_c=4000$  PSI @ 28 DAYS.
4. LOAD TRANSFER DOWEL BARS SHALL BE INSTALLED AT MID DEPTH OF THE CONCRETE PAVEMENT SECTION.
5. HOLES FOR DOWELS SHALL BE DRILLED TO THE REQUIRED DEPTH USING FRAME MOUNTED DRILLS AND SHALL BE MAINTAINED IN A LONGITUDINALLY PARALLEL POSITION.
6. DRILL HOLES 9" DEEP AND  $\frac{1}{4}$ " LARGER IN DIAMETER THAN THE DOWELS. USE THE FOLLOWING DOWEL PLACEMENT FOR TRENCH IN TRANSVERSE DIRECTION TO TRAFFIC.
  - 6.1.  $t \leq 6"$ , USE 18" LONG #6 DOWEL @ 12" C/C.
  - 6.2.  $t > 6"$ , USE 18" LONG #8 DOWEL @ 18" C/C.
  - 6.3. CONTACT ENGINEER IF  $t < 5"$ .
7. FOR TRENCH IN LONGITUDINAL DIRECTION TO TRAFFIC, DOWEL SPACING SHALL BE 36" C/C.
8. ALL LOAD TRANSFER DOWEL BARS SHALL BE EPOXY COATED.
9. ALL EXPOSED EDGES OF EXISTING HMA PAVEMENT AND SURFACE OF CONCRETE BASE SHALL BE PRIMED BEFORE NEW HMA IS PLACED.
10. CONSTRUCTION, BACKFILL AND OTHER REQUIREMENTS FOR TRENCH SHALL BE PER WSSC STANDARD DETAILS M8.0 ,8.1A ,8.1B AND 8.1C.

WASHINGTON  
SUBURBAN  
SANITARY  
COMMISSION

APPROVED: 8/18/16

[Signature]  
Chief Engineer

STANDARD DETAIL  
REPAIR FOR  
CONCRETE AND COMPOSITE  
PAVEMENTS IN AREAS WITHOUT  
JURISDICTIONAL REQUIREMENTS

M  
5.0