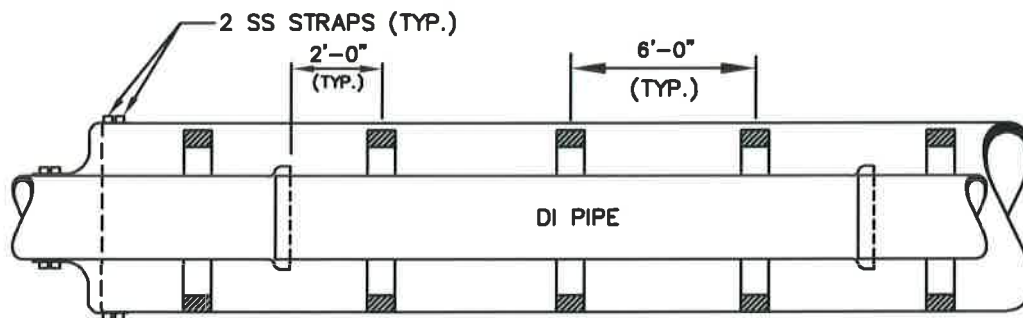
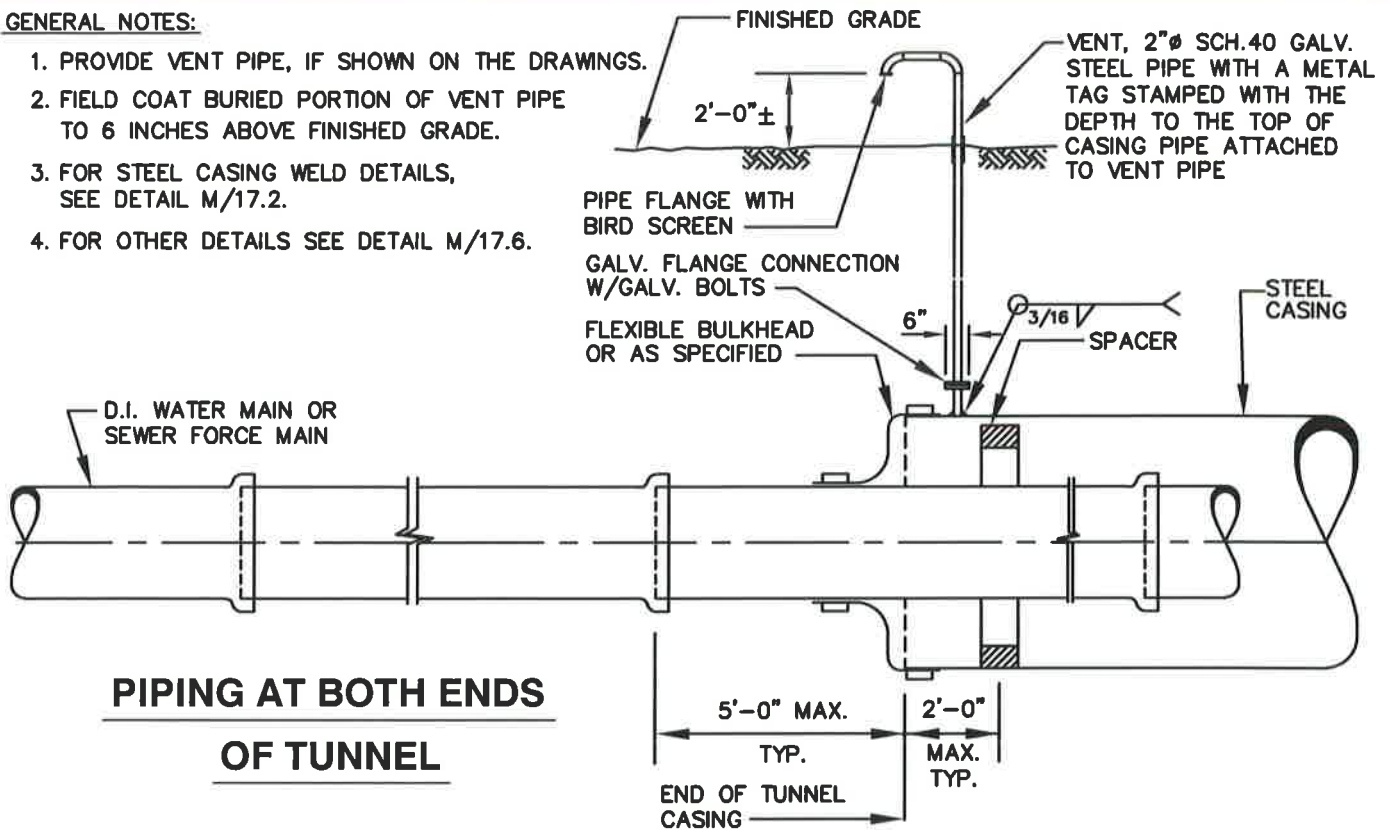
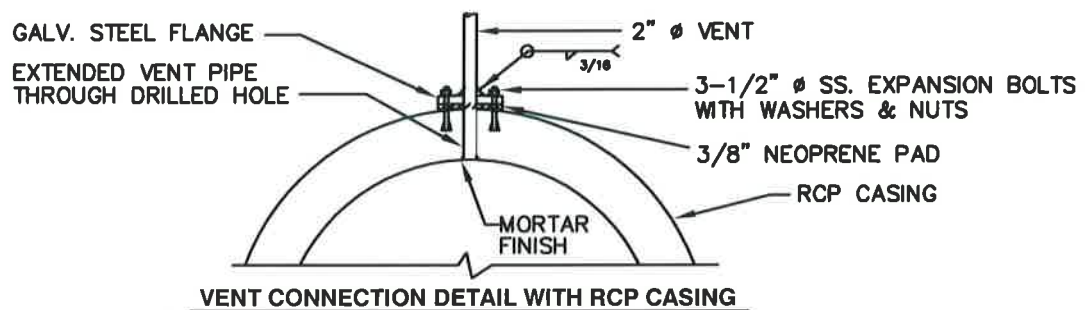


**GENERAL NOTES:**

1. PROVIDE VENT PIPE, IF SHOWN ON THE DRAWINGS.
2. FIELD COAT BURIED PORTION OF VENT PIPE TO 6 INCHES ABOVE FINISHED GRADE.
3. FOR STEEL CASING WELD DETAILS, SEE DETAIL M/17.2.
4. FOR OTHER DETAILS SEE DETAIL M/17.6.



**TYPICAL D.I. PIPE AND SPACER LAYOUT INSIDE TUNNEL**



WASHINGTON  
SUBURBAN  
SANITARY  
COMMISSION

APPROVED: 8/18/16

Chief Engineer

STANDARD DETAIL

SPACER SPACING  
AND PIPE LAYOUT AT  
ENDS OF TUNNEL.

M  
17.7