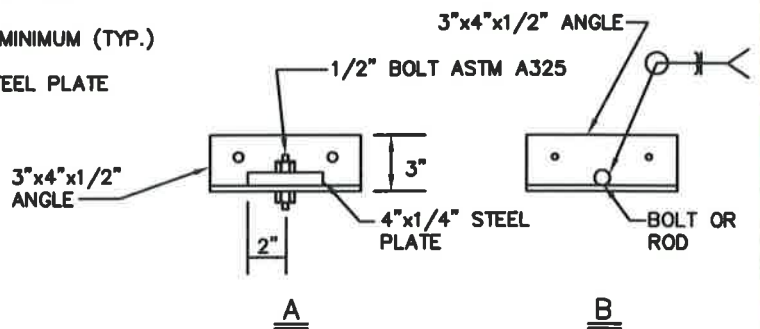


SECTION: RCP SLEEVE- INSTALLED BY OPEN EXCAVATION



SECTION: RCP SLEEVE - INSTALLED BY TUNNELING (MAX. DIAMETER OF CASING LIMITED TO 60")

NOTES:

1. PROVIDE ONE STRAP PER LENGTH OF PIPE.
2. FOR OTHER REQUIREMENTS SEE DETAILS M/17.1, M/17.2 AND M/17.3.
3. NO WELDING OR CUTTING WILL BE PERMITTED IN THE FIELD.

WASHINGTON
SUBURBAN
SANITARY
COMMISSION

APPROVED: 8/18/16

Chief Engineer

STANDARD DETAIL
HOLD DOWN ASSEMBLY
FOR RCP CASING PIPE

M
17.4