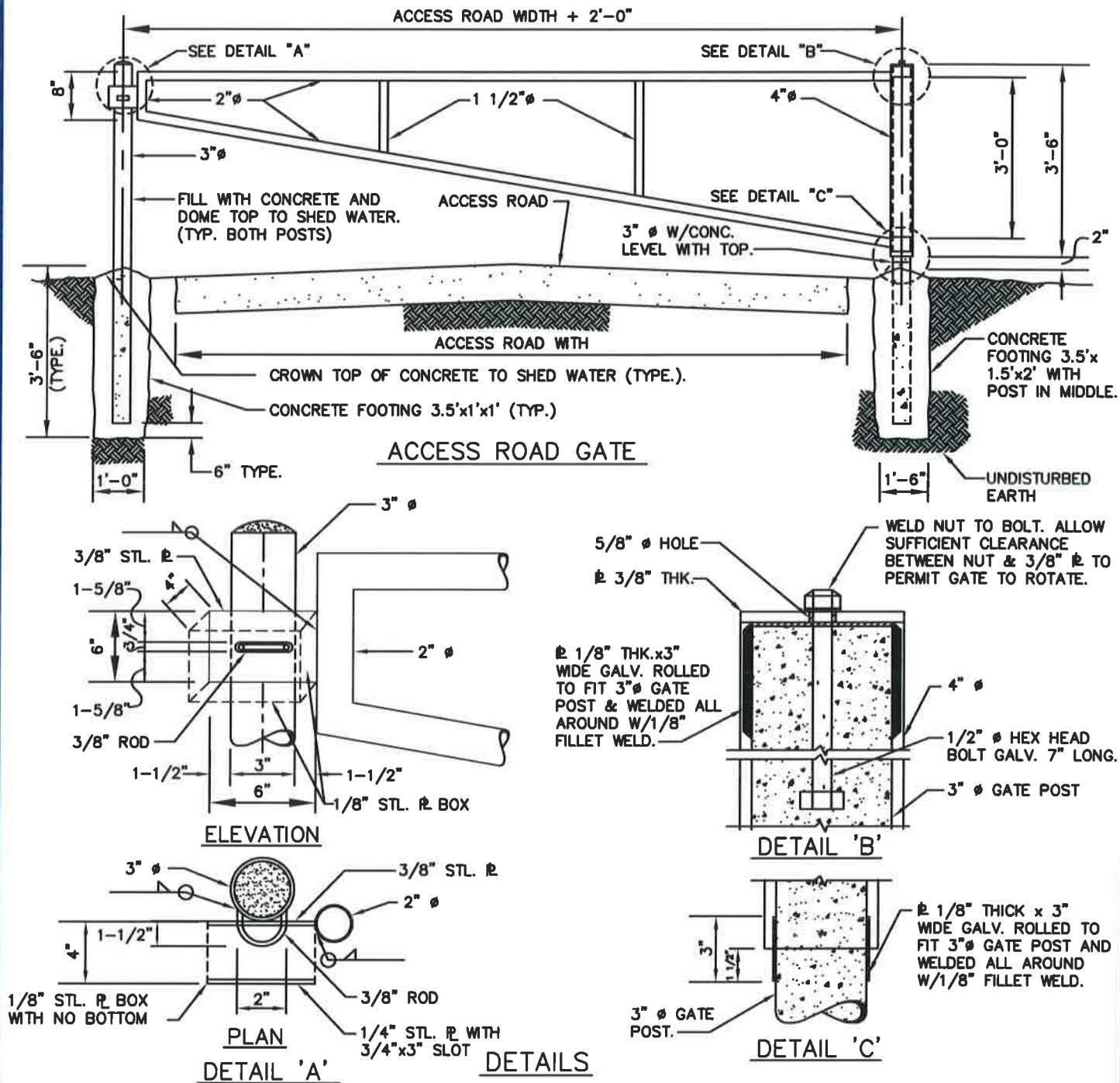


- NOTES**
1. ALL METAL USED IN THE MANUFACTURE OF THE ACCESS ROAD GATE TO BE HOT DIP GALVANIZED. ALL WELDS & PIPE TO BE PAINTED & TOUCHED UP IN ACCORDANCE WITH SPECIFICATION AND IN ACCORDANCE WITH MANUFACTURERS RECOMMENDATIONS.
 2. ALL JOINTS TO BE WELDED ALL AROUND WITH 3/16" WELDS.
 3. ALL PIPE TO BE SCHEDULE 40 STEEL, DIAMETERS SHOWN ARE NOMINAL PIPE SIZE.
 4. PADLOCK WILL BE FURNISHED BY WSSC.
 5. CONTRACTOR SHALL PROVIDE AN ADDITIONAL 3"Ø POST WITH 3/8" ROD. LOCATE TO HOLD GATE IN AN OPEN POSITION 90° FROM THAT SHOWN BELOW.
 6. GATE TO SWING IN TOWARDS WSSC PROPERTY.
 7. WIDTH OF GATE NOT TO EXCEED 16 FEET.



WASHINGTON
SUBURBAN
SANITARY
COMMISSION

APPROVED: 8/18/16

Chief Engineer

STANDARD DETAIL
ACCESS ROAD GATE

M
11.0