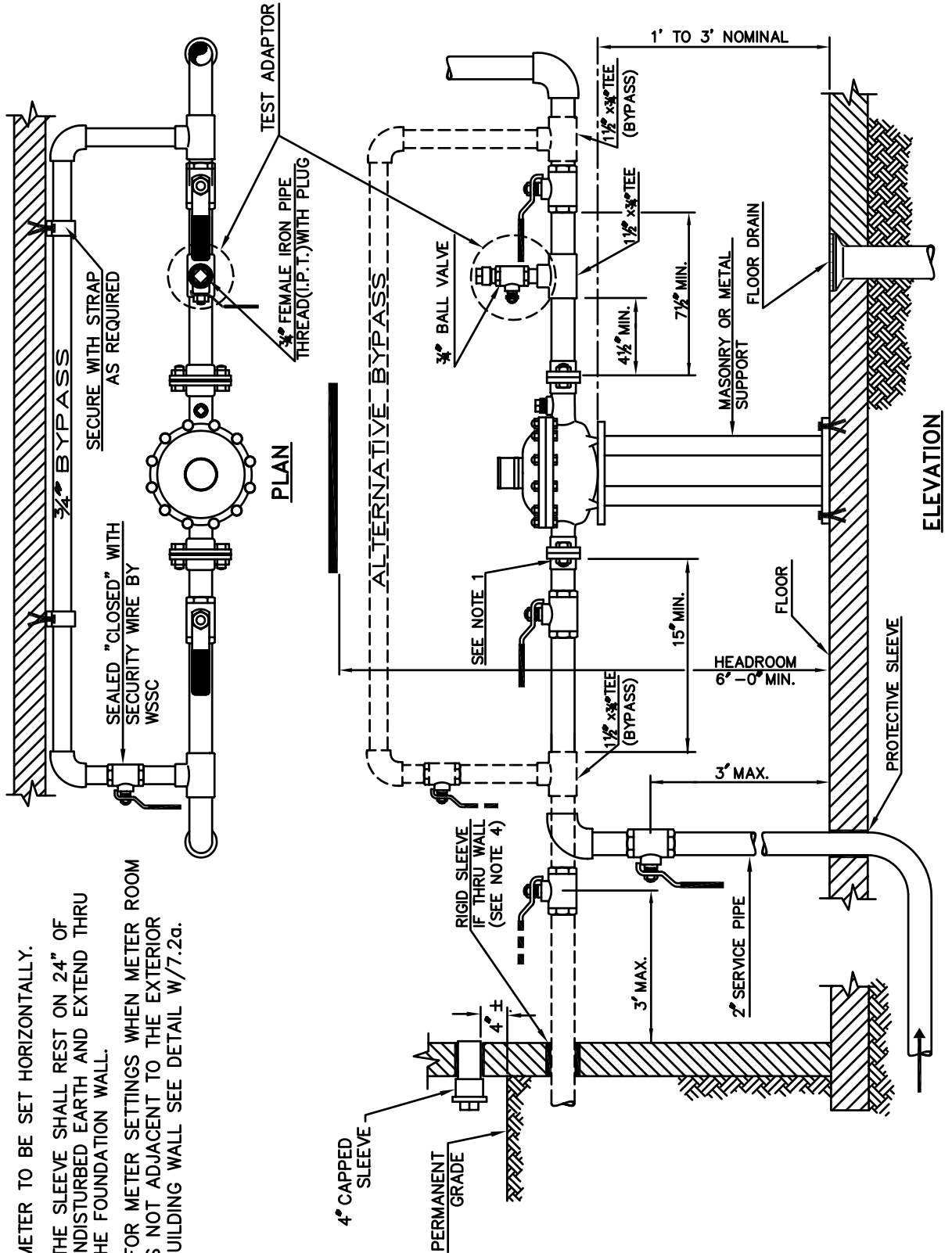


**NOTE:**

1. FLANGE BOLTS SHALL BE READILY ACCESSIBLE.
2. ALL VALVES SHALL BE BALL TYPE.
3. METER TO BE SET HORIZONTALLY.
4. THE SLEEVE SHALL REST ON 24" OF UNDISTURBED EARTH AND EXTEND THRU THE FOUNDATION WALL.
5. FOR METER SETTINGS WHEN METER ROOM IS NOT ADJACENT TO THE EXTERIOR BUILDING WALL SEE DETAIL W/7.2a.



WASHINGTON  
SUBURBAN  
SANITARY  
COMMISSION

APPROVED: JULY 1, 2005

*Richard P. Huguenue*  
Chief Engineer

STANDARD DETAIL  
INSIDE WATER  
METER SETTING 1-1/2"

W  
7.2b