

Monthly Project Cornerstone Update

Commission Meeting
November 28, 2018

Project Cornerstone Status

- ▶ Execution of the program-wide go-to-green (GTG) recovery plan has begun, with right-sizing, prioritization and project methodology improvements as its initial drivers
- ▶ Project methodology improvements, using applicable Lean-Agile concepts, are being implemented to increase transparency and faster resolution of dependencies, risks and issues
- ▶ Overall project status has improved to 'Yellow'
- ▶ Team is targeting return to 'Green' by December 2018 with the completion of the updated project baseline

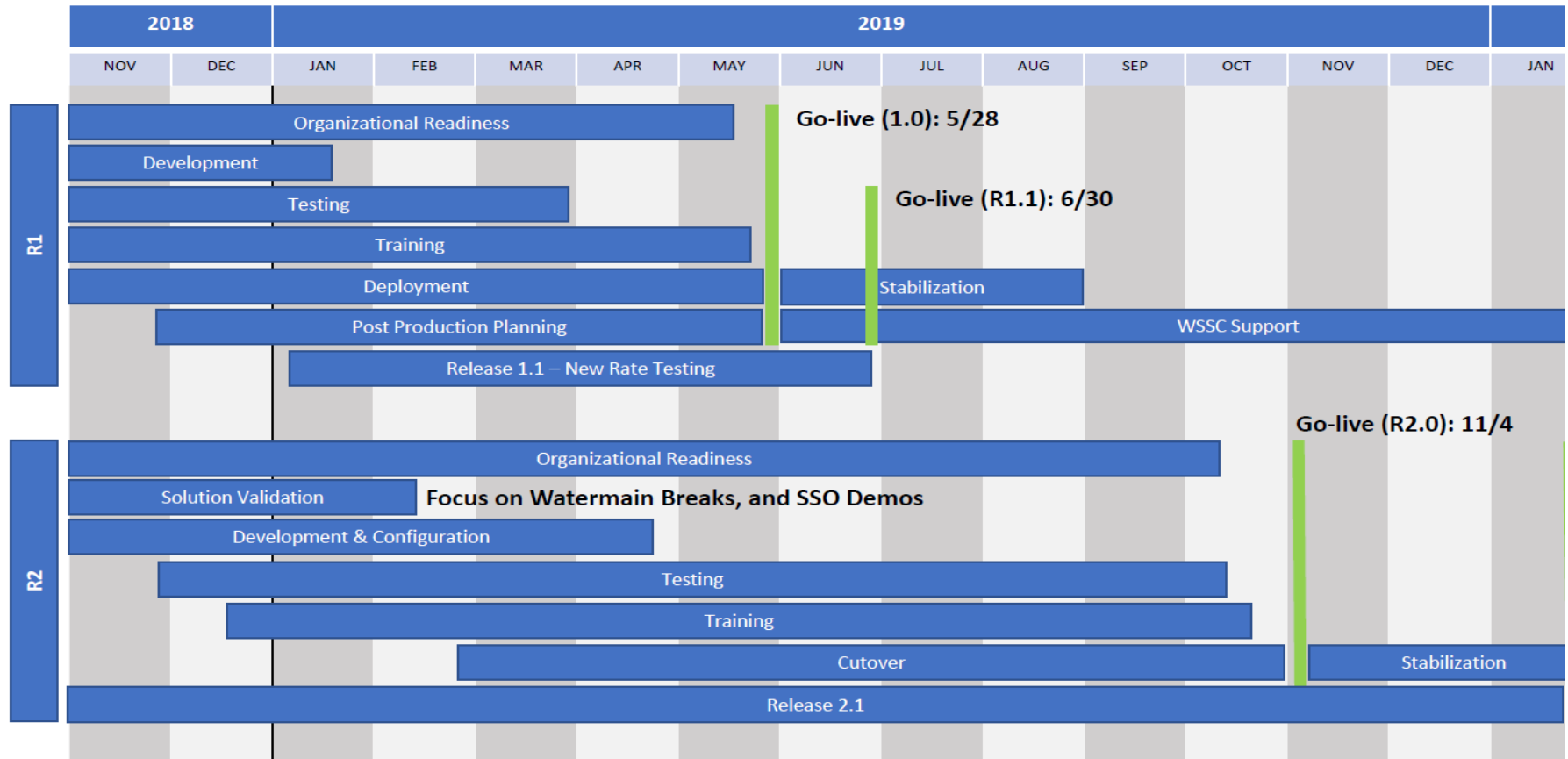
Project Cornerstone Status *continued...*

- ▶ Executive Steering Committee (ESC) has approved release-based implementation approach to ensure delivery of scope components based on WSSC's critical business needs, priority and urgency (Oct 25)
- ▶ Release 1: To deliver the scope needed to support new rate structure (C2M & MWM); Go-Live on May 28, 2019
- ▶ Release 2: To deliver remainder of the scope including WAM 2.2; Go-Live on Nov 4, 2019
- ▶ Quarterly releases/updates are projected after Release 2.

Project Cornerstone Status *continued...*

- ▶ Actively working to jump-start internal communications activities for WSSC employees and customers
- ▶ Actively working to step-up organizational readiness activities to engage and align business units, especially for Release 2 (WAM)
- ▶ Program Management team is working closely with ESC to resolve dependencies, risks and issues at a faster pace

Project Cornerstone Schedule



Project Cornerstone Status

RYG SCORING

Timeline →

	08/24	08/31	09/07	09/14	21/18	10/27	11/03
Overall Project Cornerstone							
Release 1: Go-Live: May 29, 2019							
Release 1.1: Go-Live: Jun 30, 2019							
Release 2: Go-Live: Nov 04, 2019							

Key Project Goals

- # 1 – Deliver WSSC’s business-critical components of the scope based on urgency and priority
- # 2 – Ensure C2M goes live in time to support the new rate structure, to be effective July 1, 2019

Project Implementation Approach

- To ensure Key Project Goals are met, ESC has approved release-based approach (Oct 25):
 - Release 1 Scope: C2M & MWM – Using already installed WAM 1.9 & MMIS
 - Release 1.1 Scope: Activate new rate structure
 - Release 2 Scope: WAM 2.2 & OUA & any non-critical scope components shifted from Rel. 1

Key Impacts

- Project team is working out Release 1 & 2 Project Plans, resource assignments and financial impacts (due Nov 16). While cost of the project is expected to increase, this approach will minimize the risk of not going live on in May '19 and greatly improves the chances for success in realizing all key Project Cornerstone goals.

C2M Budget

Resources	FY 2017 Budget	FY 2017 Actuals	FY 2018 Budget	FY 2018 Actuals	FY 2018 Accruals	FY 2018 Total Expenses	FY 2019 Budget	FY 2019 Actuals	FY 2020 Budget	Project Budget	Project Expenses
Oracle Consultants	\$ -	\$ 1,818	\$ 4,096,593	\$ 1,273,805	\$ 221,000	\$ 1,494,805	\$ 4,297,923	\$ 821,987	\$ 188,580	\$ 8,583,096	\$ 2,318,610
Sure Power Consulting	\$ 954,632	\$ 656,136	\$ 2,467,920	\$ 2,501,333		\$ 2,501,333	\$ 1,365,949	\$ 515,985	\$ 8,166	\$ 4,796,667	\$ 3,673,454
Origin Consulting	\$ 299,103	\$ 279,743	\$ 1,405,952	\$ 1,411,164		\$ 1,411,164	\$ 1,222,180	\$ 347,710	\$ -	\$ 2,927,234	\$ 2,038,617
Black & Veatch	\$ 574,001	\$ 540,613	\$ 2,321,363	\$ 2,197,237	\$ 230,000	\$ 2,427,237	\$ 1,995,469	\$ 405,798	\$ 178,589	\$ 5,069,421	\$ 3,373,648
SONA Consulting	\$ 110,963	\$ -	\$ 434,322	\$ 212,779		\$ 212,779	\$ 428,701	\$ -	\$ -	\$ 973,985	\$ 212,779
Blue Heron	\$ 155,768	\$ 155,768	\$ -	\$ -		\$ -	\$ -	\$ -	\$ -	\$ 155,768	\$ 155,768
High Performance Laptops	\$ -	\$ 26,050	\$ 26,050	\$ -	\$ 26,050	\$ 26,050	\$ -	\$ -	\$ -	\$ 26,050	\$ 52,100
Training Laptops	\$ -	\$ -	\$ -	\$ -		\$ -	\$ 30,000	\$ -	\$ -	\$ 30,000	\$ -
Independent Verification and Validation (IV&V)	\$ -	\$ -	\$ -	\$ -		\$ -	\$ 225,000	\$ -	\$ -	\$ 225,000	\$ -
3rd Party Contingency	\$ -	\$ -	\$ 50,407	\$ 407		\$ 407	\$ 40,000	\$ -	\$ -	\$ 90,407	\$ 407
Auxiliary Workshop Space	\$ 4,449	\$ 4,449	\$ -	\$ -		\$ -	\$ -	\$ -	\$ -	\$ 4,449	\$ 4,449
Konterra Lease	\$ -	\$ -	\$ 85,220	\$ 85,220		\$ 85,220	\$ 102,264	\$ 41,912	\$ 17,044	\$ 204,528	\$ 127,132
Konterra Setup	\$ -	\$ -	\$ 110,356	\$ 110,356		\$ 110,356	\$ -	\$ -	\$ -	\$ 110,356	\$ 110,356
Konterra Furniture	\$ -	\$ -	\$ 40,121	\$ 40,121		\$ 40,121	\$ -	\$ -	\$ -	\$ 40,121	\$ 40,121
Change Management	\$ -	\$ -	\$ -	\$ -		\$ -	\$ 15,000	\$ -	\$ -	\$ 15,000	\$ -
HW/SW Contingency	\$ -	\$ -	\$ 12,290	\$ 12,290		\$ 12,290	\$ -	\$ -	\$ -	\$ 12,290	\$ 12,290
HP ALM Licenses	\$ -	\$ -	\$ -	\$ -		\$ -	\$ -	\$ -	\$ -	\$ -	\$ -
UC-4	\$ -	\$ -	\$ 254,963	\$ -	\$ 254,963	\$ 254,963	\$ -	\$ -	\$ -	\$ 254,963	\$ 254,963
Service-Oriented Architecture (SOA) License	\$ -	\$ -	\$ 966,382	\$ 966,382		\$ 966,382	\$ 318,910	\$ -	\$ -	\$ 1,285,292	\$ 966,382
DR Go-Live	\$ -		\$ -	\$ -		\$ -	\$ 15,000		\$ -	\$ 15,000	\$ -
Oracle Hardware		\$ -	\$ 406,517	\$ 406,517		\$ 406,517	\$ 62,854	\$ -	\$ 65,997	\$ 535,368	\$ 406,517
Total	\$ 2,098,914	\$ 1,664,576	\$ 12,678,456	\$ 9,217,611	\$ 732,013	\$ 9,949,624	\$ 10,119,249	\$ 2,133,393	\$ 458,376	\$ 25,354,995	\$ 13,747,593

WAM / MWM Budget

Resources	FY 2018 Budget	FY 2018 Actuals	FY 2018 Accruals	FY 2018 Total Expenses	FY 2019 Budget	FY 2019 Actuals	FY 2020 Budget	Project Budget	Project Expenses
Oracle Consultants	\$ 3,861,213	\$ 163,258	\$ 442,000	\$ 605,258	\$ 6,119,807	\$ 3,560,402	\$ 436,628	\$ 10,417,648	\$ 4,165,659
Sure Power Consulting	\$ 309,551	\$ 291,598	\$ 17,953	\$ 309,551	\$ 254,240	\$ 94,896	\$ -	\$ 563,791	\$ 404,447
Origin Consulting	\$ 55,880	\$ 82,738	\$ 13,500	\$ 96,238	\$ 160,600	\$ 49,026	\$ -	\$ 216,480	\$ 145,264
Black & Veatch	\$ 443,727	\$ 241,887	\$ 201,840	\$ 443,727	\$ 478,035	\$ 36,697	\$ 44,986	\$ 966,748	\$ 480,424
SONA Consulting	\$ 604,978	\$ 305,631		\$ 305,631	\$ 920,457	\$ -	\$ 163,307	\$ 1,688,742	\$ 305,631
Blue Heron	\$ -	\$ -		\$ -	\$ -	\$ -	\$ -	\$ -	\$ -
High Performance Laptops	\$ -	\$ -		\$ -	\$ -	\$ -	\$ -	\$ -	\$ -
Training Laptops	\$ -	\$ -		\$ -	\$ -	\$ -	\$ -	\$ -	\$ -
Workshop Lunches	\$ 3,840	\$ -	\$ 2,500	\$ 2,500	\$ -	\$ -	\$ -	\$ 3,840	\$ 2,500
DR Go Live	\$ -	\$ -		\$ -	\$ 15,000		\$ -	\$ 15,000	\$ -
Independent Verification and Validation (IV&V)	\$ -	\$ 14,461		\$ 14,461	\$ 225,000	\$ -	\$ -	\$ 225,000	\$ 14,461
UC4 Services	\$ 120,000	\$ -	\$ 120,000	\$ 120,000	\$ -		\$ -	\$ 120,000	\$ 120,000
Change Management	\$ -	\$ -		\$ -	\$ 15,000		\$ -	\$ 15,000	\$ -
Service-Oriented Architecture (SOA) Licenses	\$ 966,382	\$ 966,382		\$ 966,382	\$ 106,300	\$ -	\$ 106,300	\$ 1,178,982	\$ 966,382
Oracle Hardware	\$ -	\$ -		\$ -	\$ -	\$ -	\$ -	\$ -	\$ -
Resource Contingency	\$ -	\$ 70,841		\$ 70,841	\$ -	\$ 6,918	\$ -	\$ -	\$ 77,759
Total	\$ 6,365,570	\$ 2,136,795	\$ 797,793	\$ 2,934,588	\$ 8,294,439	\$ 3,747,940	\$ 751,221	\$ 15,411,230	\$ 6,682,528

Questions

