

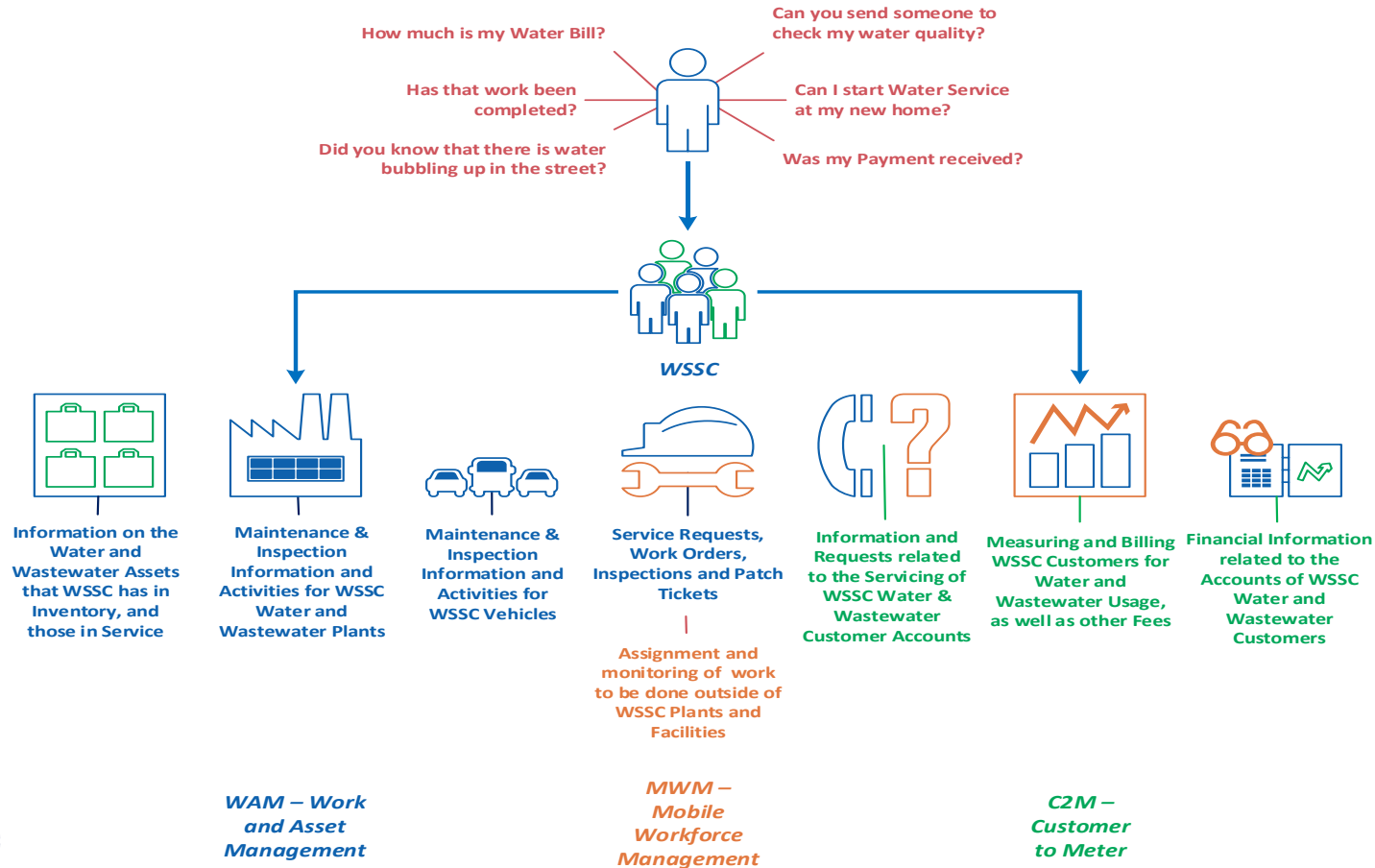
Monthly Project Cornerstone Update

Commission Meeting
August 15, 2018

What is Project Cornerstone?

Where the Technology is Changing

Project Cornerstone – Building The World-Class Utility



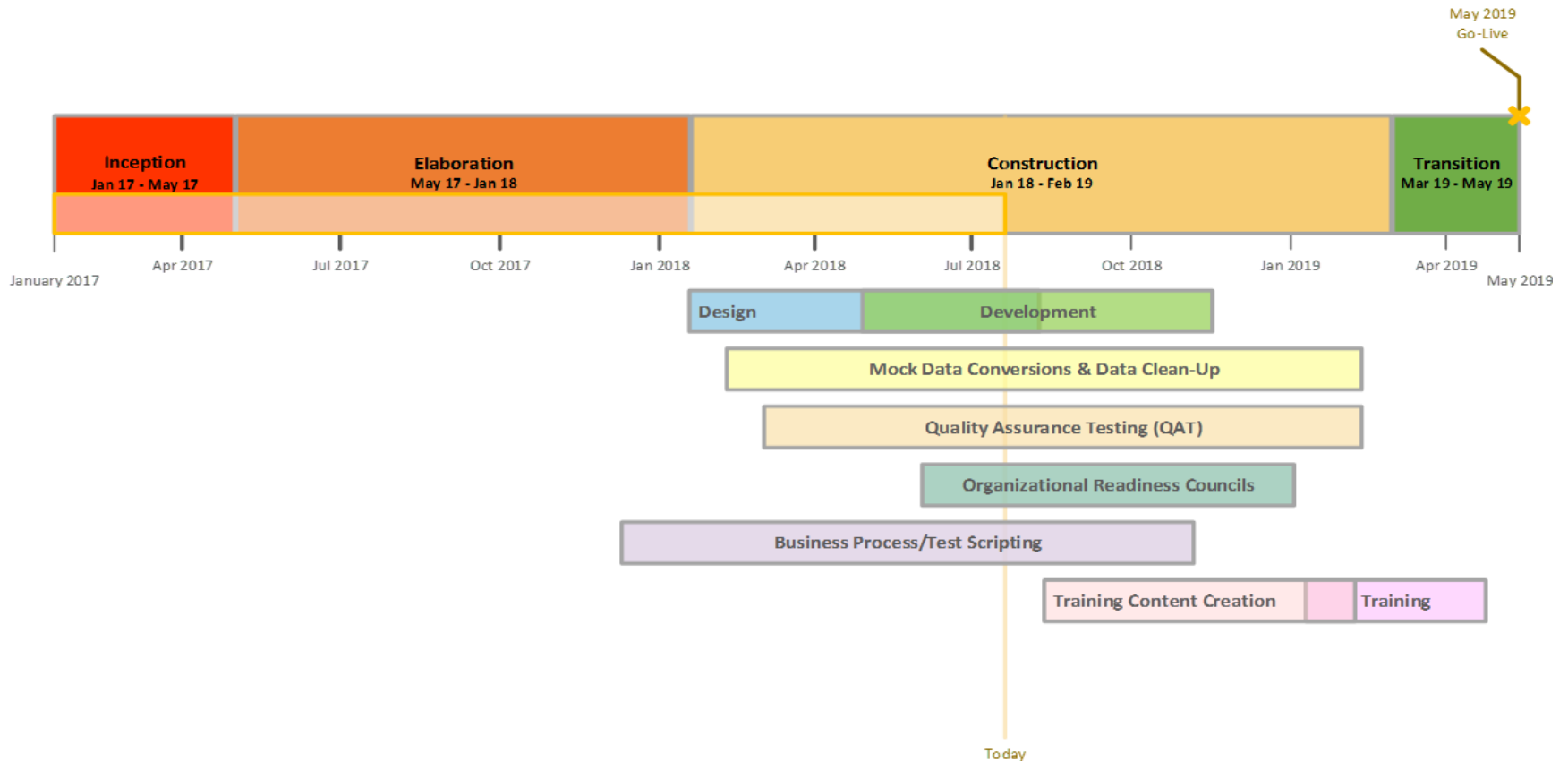
Project Cornerstone Status

- ▶ Business case for Project Cornerstone has been delivered.
- ▶ Developing internal communications plan.
- ▶ Finalizing plan for post-go-live support.

Project Cornerstone Status *continued...*

- ▶ C2M and WAM/MWM are on budget.
- ▶ C2M testing and organizational readiness are on target.
- ▶ WAM/MWM functional designs are on target.

Project Cornerstone Schedule



C2M Budget

Resources	FY 2017 Budget	FY 2017 Actuals	FY 2018 Budget	FY 2018 Actuals	FY 2018 Accruals	FY 2018 Total Expenses	FY 2019 Budget	FY 2020 Budget	Project Budget	Project Expenses
Oracle Consultants	\$ -	\$ 1,818	\$ 4,096,593	\$1,273,805	\$ 221,000	\$ 1,494,805	\$ 4,297,923	\$188,580	\$ 8,583,096	\$ 1,496,623
Sure Power Consulting	\$ 954,632	\$ 656,136	\$ 2,467,920	\$2,252,895	\$ 144,795	\$ 2,397,690	\$ 1,365,949	\$ 8,166	\$ 4,796,667	\$ 3,053,826
Origin Consulting	\$ 299,103	\$ 279,743	\$ 1,405,952	\$1,242,044	\$ 126,100	\$ 1,368,144	\$ 1,222,180	\$ -	\$ 2,927,234	\$ 1,647,886
Black & Veatch	\$ 574,001	\$ 540,613	\$ 2,321,363	\$2,063,846	\$ 370,088	\$ 2,433,934	\$ 1,995,469	\$178,589	\$ 5,069,421	\$ 2,974,547
SONA Consulting	\$ 110,963	\$ -	\$ 434,322	\$ 212,779		\$ 212,779	\$ 428,701	\$ -	\$ 973,985	\$ 212,779
Blue Heron	\$ 155,768	\$ 155,768	\$ -	\$ -		\$ -	\$ -	\$ -	\$ 155,768	\$ 155,768
High Performance Laptops	\$ -	\$ 26,050	\$ 26,050	\$ -	\$ 26,050	\$ 26,050	\$ -	\$ -	\$ 26,050	\$ 52,100
Training Laptops	\$ -	\$ -	\$ -	\$ -		\$ -	\$ 30,000	\$ -	\$ 30,000	\$ -
Independent Verification and Validation (IV&V)	\$ -	\$ -	\$ -	\$ -		\$ -	\$ 225,000	\$ -	\$ 225,000	\$ -
3rd Party Contingency	\$ -	\$ -	\$ 50,407	\$ 407		\$ 407	\$ 40,000	\$ -	\$ 90,407	\$ 407
Auxiliary Workshop Space	\$ 4,449	\$ 4,449	\$ -	\$ -		\$ -	\$ -	\$ -	\$ 4,449	\$ 4,449
Konterra Lease	\$ -	\$ -	\$ 85,220	\$ 59,654	\$ 25,566	\$ 85,220	\$ 102,264	\$ 17,044	\$ 204,528	\$ 85,220
Konterra Setup	\$ -	\$ -	\$ 110,356	\$ 110,356		\$ 110,356	\$ -	\$ -	\$ 110,356	\$ 110,356
Konterra Furniture	\$ -	\$ -	\$ 40,121	\$ 40,121		\$ 40,121	\$ -	\$ -	\$ 40,121	\$ 40,121
Change Management	\$ -	\$ -	\$ -	\$ -		\$ -	\$ 15,000	\$ -	\$ 15,000	\$ -
HW/SW Contingency	\$ -	\$ -	\$ 12,290	\$ 12,290		\$ 12,290	\$ -	\$ -	\$ 12,290	\$ 12,290
HP ALM Licenses	\$ -	\$ -	\$ -	\$ -		\$ -	\$ -	\$ -	\$ -	\$ -
UC-4	\$ -	\$ -	\$ 254,963	\$ -	\$ 254,963	\$ 254,963	\$ -	\$ -	\$ 254,963	\$ 254,963
Service-Oriented Architecture (SOA) License	\$ -	\$ -	\$ 966,382	\$ 966,382		\$ 966,382	\$ 318,910	\$ -	\$ 1,285,292	\$ 966,382
DR Go-Live	\$ -		\$ -	\$ -		\$ -	\$ 15,000	\$ -	\$ 15,000	\$ -
Oracle Hardware		\$ -	\$ 406,517	\$ 406,517		\$ 406,517	\$ 62,854	\$ 65,997	\$ 535,368	\$ 406,517
Total	\$ 2,098,914	\$1,664,576	\$12,678,456	\$8,641,097	\$1,168,562	\$ 9,809,659	\$10,119,249	\$458,376	\$25,354,995	\$11,474,234

WAM/MWM Budget

Resources	FY 2018 Budget	FY 2018 Actuals	FY 2018 Accruals	FY 2018 Total Expenses	FY 2019 Budget	FY 2020 Budget	Project Budget	Project Expenses
Oracle Consultants	\$ 3,861,213	\$ 163,258	\$ 442,000	\$ 605,258	\$ 6,119,807	\$436,628	\$10,417,648	\$ 605,258
Sure Power Consulting	\$ 309,551	\$ 246,346	\$ 63,205	\$ 309,551	\$ 254,240	\$ -	\$ 563,791	\$ 309,551
Origin Consulting	\$ 55,880	\$ 64,738	\$ 31,500	\$ 96,238	\$ 160,600	\$ -	\$ 216,480	\$ 96,238
Black & Veatch	\$ 443,727	\$ 241,887	\$ 201,840	\$ 443,727	\$ 478,035	\$ 44,986	\$ 966,748	\$ 443,727
SONA Consulting	\$ 604,978	\$ 305,631		\$ 305,631	\$ 920,457	\$163,307	\$ 1,688,742	\$ 305,631
Blue Heron	\$ -	\$ -		\$ -	\$ -	\$ -	\$ -	\$ -
High Performance Laptops	\$ -	\$ -		\$ -	\$ -	\$ -	\$ -	\$ -
Training Laptops	\$ -	\$ -		\$ -	\$ -	\$ -	\$ -	\$ -
Workshop Lunches	\$ 3,840	\$ -	\$ 2,500	\$ 2,500	\$ -	\$ -	\$ 3,840	\$ 2,500
DR Go Live	\$ -	\$ -		\$ -	\$ 15,000	\$ -	\$ 15,000	\$ -
Independent Verification and Validation (IV&V)	\$ -	\$ 14,461		\$ 14,461	\$ 225,000	\$ -	\$ 225,000	\$ 14,461
UC4 Services	\$ 120,000	\$ -	\$ 120,000	\$ 120,000	\$ -	\$ -	\$ 120,000	\$ 120,000
Change Management	\$ -	\$ -		\$ -	\$ 15,000	\$ -	\$ 15,000	\$ -
Service-Oriented Architecture (SOA) Licenses	\$ 966,382	\$ 966,382		\$ 966,382	\$ 106,300	\$106,300	\$ 1,178,982	\$ 966,382
Oracle Hardware	\$ -	\$ -		\$ -	\$ -	\$ -	\$ -	\$ -
Resource Contingency	\$ -	\$ 65,148		\$ 65,148	\$ -	\$ -	\$ -	\$ 65,148
Total	\$ 6,365,570	\$ 2,067,850	\$ 861,045	\$ 2,928,895	\$ 8,294,439	\$ 751,221	\$15,411,230	\$ 2,928,895

Questions

