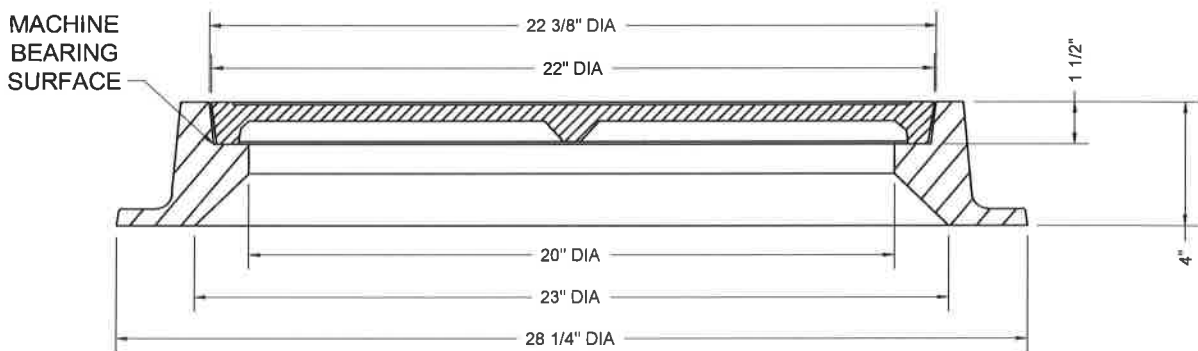


PLAN



FRAME AND COVER SECTION

MATERIAL SPECIFICATION:
GRAY IRON ASTM A48 CL35B

CASTINGS SHALL CONFORM TO
AND BE MANUFACTURED IN
ACCORDANCE WITH THE
REQUIREMENTS OF AASHTO
STD M306, LATEST REVISION

SEE DETAIL P&M 10.4b1
FOR CONTINUATION

APPLICABLE STOCK NOS.
5680-9011-2) SEE P&M
5680-9012-0) 10.4A
5680-9021-1
5680-9013-8

WASHINGTON
SUBURBAN
SANITARY
COMMISSION

REVISIONS:

APPROVED:

3/17/16
[Signature]

MATERIAL AND SERVICES GROUP LEADER

PROCUREMENT AND MANUFACTURING DETAIL

HEAVYWEIGHT MANHOLE
FRAME & COVER

P&M
10.4b