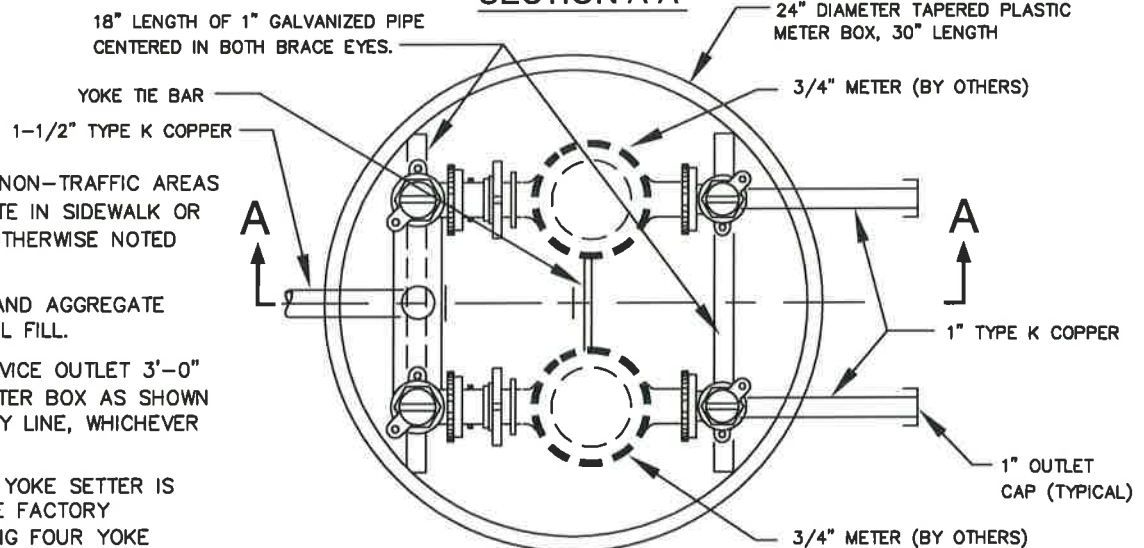


**SECTION A-A**




**PLAN**

**NOTES:**

1. METER SETTING FOR NON-TRAFFIC AREAS ONLY, DO NOT LOCATE IN SIDEWALK OR DRIVEWAY, UNLESS OTHERWISE NOTED ON THE DRAWINGS.
2. COMPACT BACKFILL AND AGGREGATE BASE AS STRUCTURAL FILL.
3. EXTEND COPPER SERVICE OUTLET 3'-0" MINIMUM BEYOND METER BOX AS SHOWN OR TO THE PROPERTY LINE, WHICHEVER IS GREATER.
4. 3/4" DOUBLE METER YOKE SETTER IS COMPLETE ONE-PIECE FACTORY ASSEMBLED, INCLUDING FOUR YOKE ANGLE BALL VALVES, BENDS, TWO YOKES AND COMPRESSION COUPLINGS.

WASHINGTON  
SUBURBAN  
SANITARY  
COMMISSION

APPROVED: 9/28/16  
  
Chief Engineer

STANDARD DETAIL  
**DOUBLE 3/4-INCH  
METER SETTING**

W  
5.15