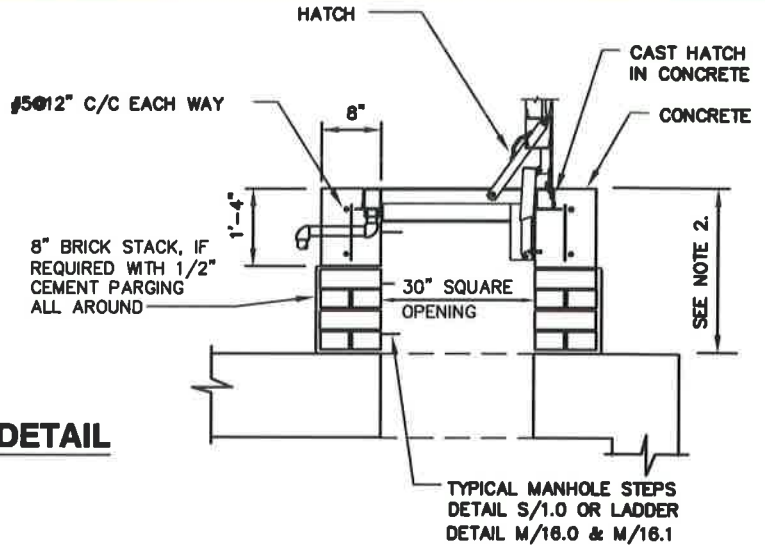


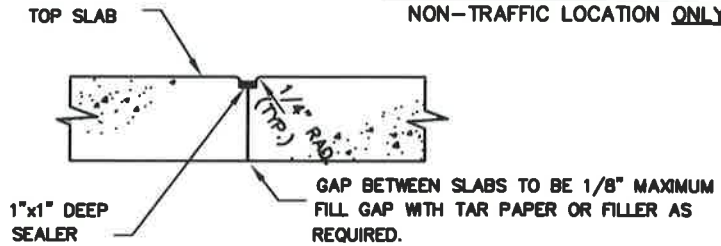
**MANHOLE FRAME AND COVER STACK DETAIL**



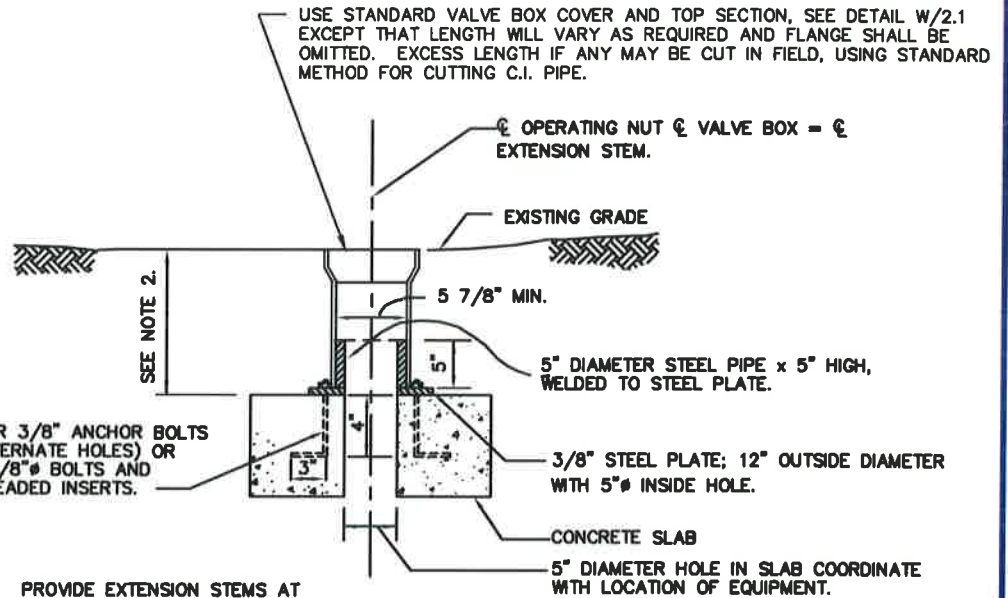
**HATCH STACK DETAIL  
NON-TRAFFIC LOCATION ONLY**

**NOTE:**

1. DO NOT USE HATCHES WHERE VAULTS ARE LOCATED IN A STREET OR OTHER LOCATIONS SUBJECTED TO TRAFFIC
2. FOR MAXIMUM COVER OVER TOP SLAB SEE DETAILS W/2.4, W/2.4a, W/2.6, W/5.21, W/5.22, W/5.23, W/5.24, W/5.25 AND W/10.7.
3. FOR MINIMUM COVER OVER TOP SLAB. HATCHES 1'-4" MINIMUM AND FRAME AND COVERS 1'-3" MINIMUM.



**SLAB JOINT DETAIL**



**VALVE BOX SLAB OPENING**

PROVIDE RUBBER PLUGS AT ALL HOLES.



2" Ø HOLE IN SLAB. SEE STANDARD DETAILS FOR LOCATION.

PROVIDE EXTENSION STEMS AT ALL VALVE BOXES.

**LIFTING HOLE DETAIL**

WASHINGTON  
SUBURBAN  
SANITARY  
COMMISSION

APPROVED: 9/28/16  
  
Chief Engineer

STANDARD DETAIL  
**TOP SLAB DETAILS  
FOR VAULTS**

W  
5.5