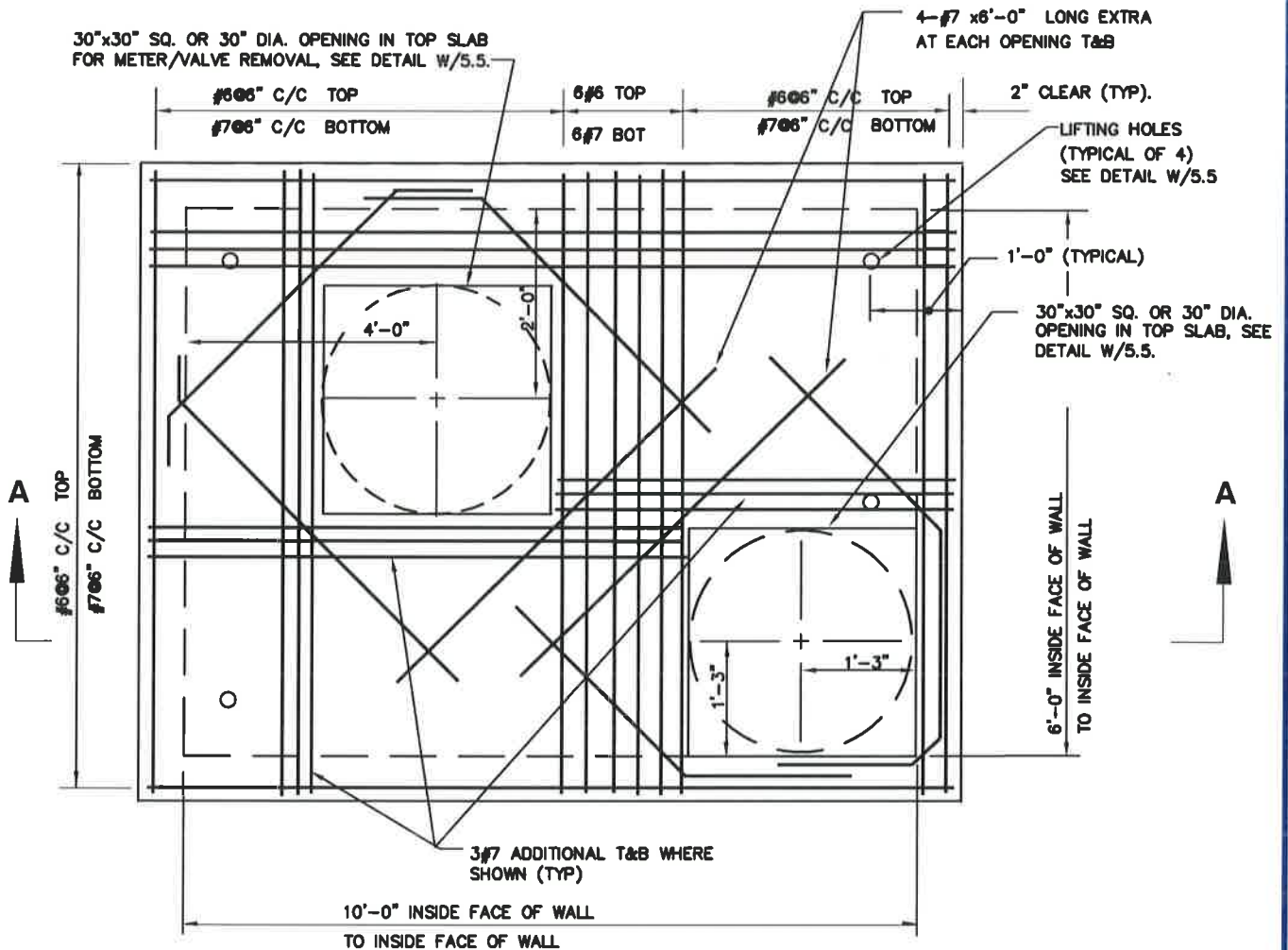
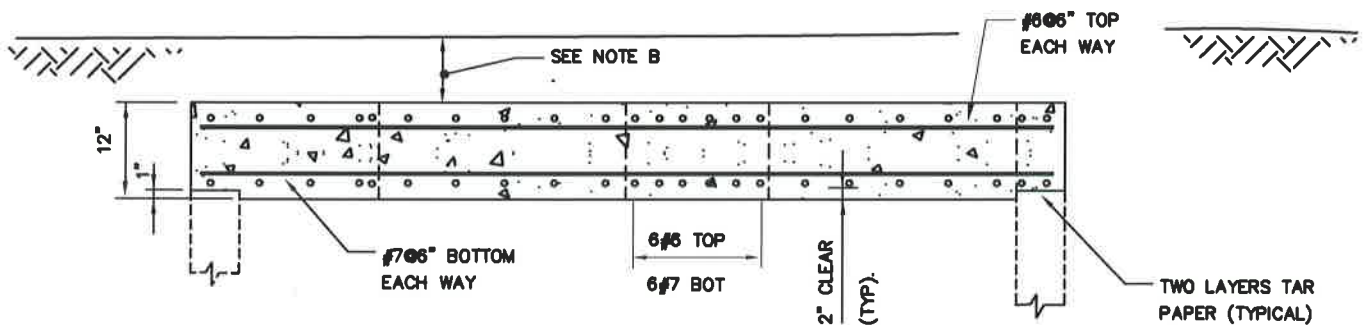


30"x30" SQ. OR 30" DIA. OPENING IN TOP SLAB FOR METER/VALVE REMOVAL, SEE DETAIL W/5.5.



PLAN



CAST IN PLACE CONCRETE TOP SLAB NOTES:

1. $f'_c = 4000$ PSI. @ 28 DAYS
2. $f_y = 60,000$ PSI.
3. TOP SLABS ARE DESIGNED FOR THE FOLLOWING CONDITIONS:
 - a). H2OLL + 0% IMPACT+ 3.5' MAXIMUM EARTH COVER
 - b). H2OLL + 30% IMPACT+ 1' EARTH COVER
4. CONTRACTOR MAY USE PRECAST TOP SLABS, SEE SPECIFICATIONS FOR SUBMITTAL REQUIREMENTS.

SECTION A-A

NOTE:

- A. FOR DETAILS OF COMPOUND METERS SEE DETAIL W/5.1. FOR 10" FM METERS SEE DETAIL W/5.0g AND 6" & 8" FM METER WITH CHECK VALVE, SEE W/5.0c. AND 10" ULTRASONIC METER, SEE W/14.0a.
- B. 2'-6" MAXIMUM COVER OVER TOP SLAB, FOR MINIMUM COVER, SEE DETAIL W/5.5.

WASHINGTON
SUBURBAN
SANITARY
COMMISSION

APPROVED: 9/28/16

Chief Engineer

STANDARD DETAIL
CAST IN PLACE
CONCRETE TOP SLAB FOR
ULTRASONIC METER AND
FM METER W/ CHECK VALVE VAULT

W
5.25