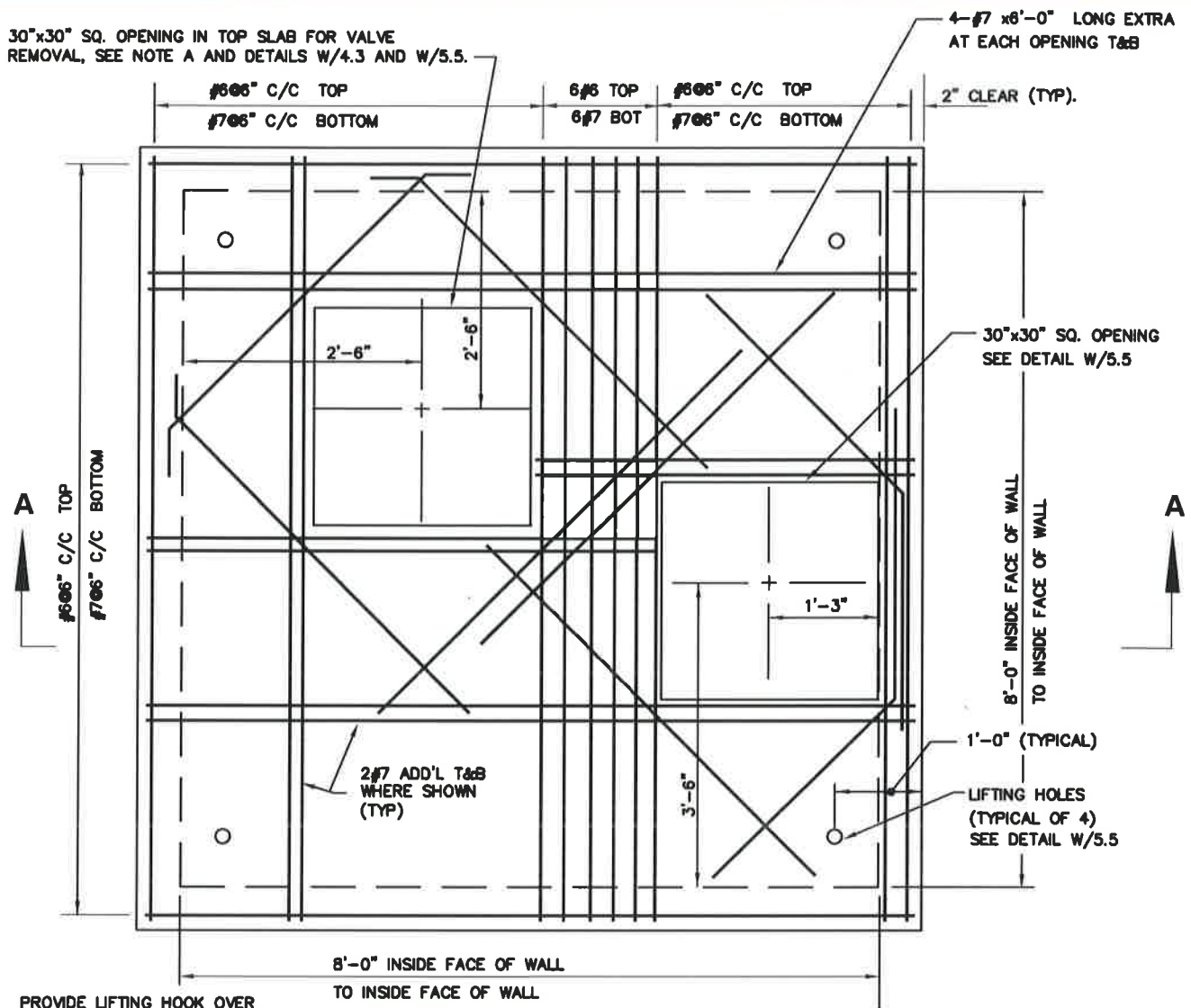
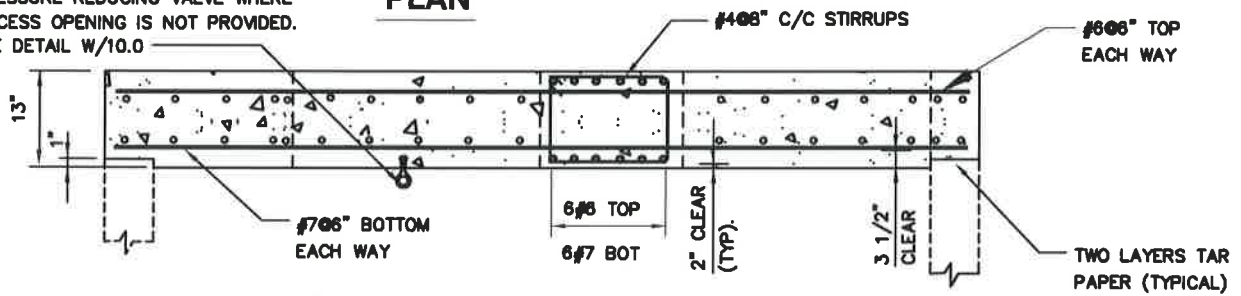


30"x30" SQ. OPENING IN TOP SLAB FOR VALVE REMOVAL, SEE NOTE A AND DETAILS W/4.3 AND W/5.5.



PLAN

PROVIDE LIFTING HOOK OVER PRESSURE REDUCING VALVE WHERE ACCESS OPENING IS NOT PROVIDED. SEE DETAIL W/10.0



SECTION A-A

CAST IN PLACE CONCRETE TOP SLAB NOTES

1. $f'_c = 4000$ PSI. \odot 28 DAYS
2. $f_y = 60,000$ PSI.
3. TOP SLABS ARE DESIGNED FOR THE FOLLOWING CONDITIONS:
 - a). H2OLL + 0% IMPACT+ 3.5' MAXIMUM EARTH COVER
 - b). H2OLL + 30% IMPACT+ 1' EARTH COVER
4. CONTRACTOR MAY USE PRECAST TOP SLABS, SEE SPECIFICATIONS FOR SUBMITTAL REQUIREMENTS.
5. FOR ADDITIONAL INFORMATION, SEE DETAILS W/4.3 AND W/4.7.

VALVE REMOVAL OPENING NOTES:

A. FOR 4" VALVE NO OPENINGS ARE REQUIRED. PROVIDE 1 PIECE TOP SLAB REINFORCED AS PER DETAIL W/5.2

WASHINGTON
SUBURBAN
SANITARY
COMMISSION

APPROVED: 9/23/16

Chief Engineer

STANDARD DETAIL
CAST IN PLACE CONCRETE TOP
SLAB FOR DUEL PRESSURE RELIEF
AND TYPE "2" LAYOUT PRESSURE
REDUCING VALVE VAULTS

W
5.23