



Western Branch Basin Sewer Rehabilitation Project

Project Number: [CRCILRMH7428A22](#) CTO 115

Montré Dupree, Project Outreach Specialist
Ayoola Adeoye, Design Project Manager
Derrick Jones, Construction Manager

March 27, 2025

Agenda

- Introduction to Project Team
- WSSC Water Overview
- Project Overview
- Project Map
- Estimated Construction Schedule
- What to Expect During Construction
- Important Contacts/Customer Assistance
- Questions & Answers

Project **Contacts**

Steven Gray

Technical Contracts Supervisor

240-304-1155

Steven.Gray2@wsscwater.com

Walter Guzman

Customer Advocate

240-444-5803

Walter.guzman@wsscwater.com

Emergency Services Center

Open 24/7

301-206-4002

emergencycallcenter@wsscwater.com



Scan or visit
wsscwater.com/projectmeetings
for more information on
Community Project Meetings

WSSC WATER AT A GLANCE



★ **106 years** of no drinking water quality violations, ever.

★ **Platinum Peak Performance** recognition for wastewater treatment and resource recovery excellence.



8th

Largest combined water and wastewater utility in the United States by population served



1.9M

Residents served



162 MGD

Water provided each day



1000 Sq. Miles

Size of WSSC Water's Service Area



1,700+

Members of Team H₂O deliver on our mission



\$114.9B

WSSC Water supports the economic output of Prince George's and Montgomery counties



\$1.8B

FY2025 Operating & Capital Budget



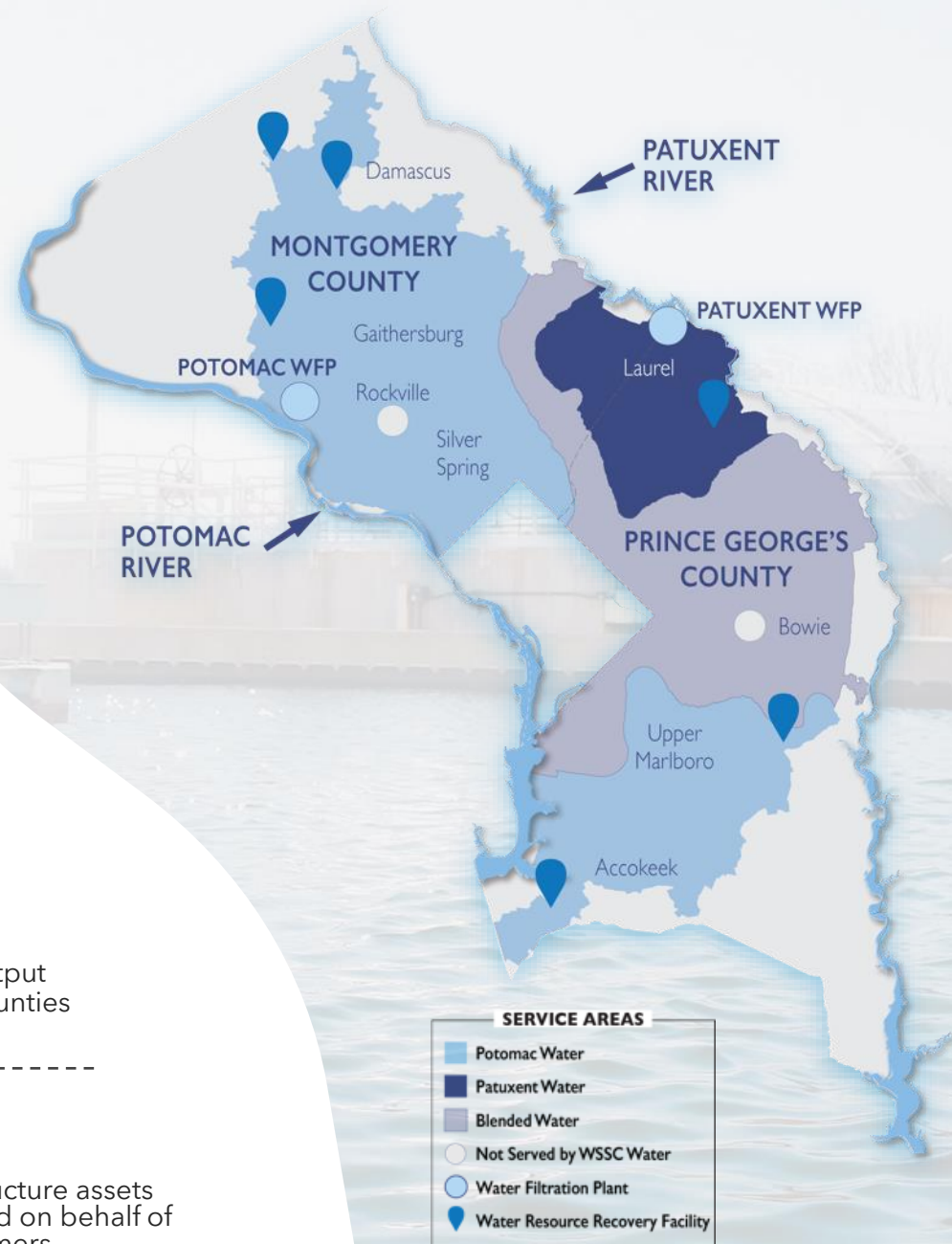
\$5.9B

6-Year Capital Improvements Program



\$9B

In infrastructure assets maintained on behalf of our customers



Sewer Rehabilitation Program Overview

- Strategically replacing and rehabilitating aging infrastructure to enhance service and reliability to customers
- Replacing and repairing aging pipes and manholes as part of our comprehensive sewer rehabilitation program
- Correcting structural deficiencies in sewer mains that may result from soil settlement, root penetration or corrosion.
 - These often contribute to sanitary sewer overflows and backups into homes
- Protecting the environment for future generations

Project Overview

- Approximately 3.3 miles of sewer pipes and 102 manholes to be rehabilitated
- Sewer pipes and manholes rehabilitated using primarily trenchless methods
- Completed projects will extend the life of sewer pipes by at least 50 years

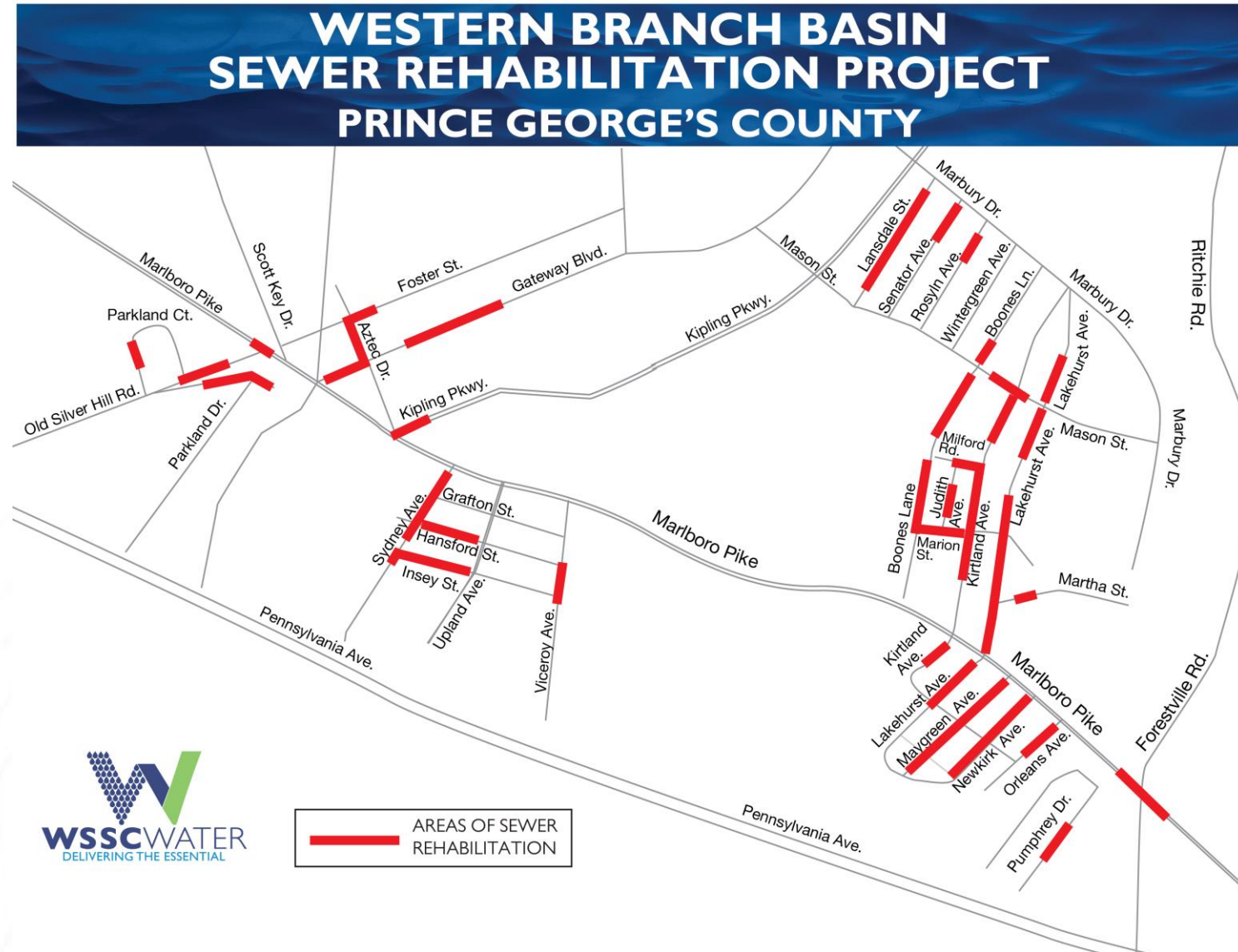
Pictured Below: Example of manholes in the right of way.



Project Map

Directly Impacted Streets

- Aztec Drive
- Boones Lane
- Foster Street
- Gateway Boulevard
- Halleck Street
- Hansford Street
- Insey Street
- Judith Avenue
- Kipling Parkway
- Kirtland Avenue
- Lakehurst Avenue
- Lansdale Street
- Marion Street
- Marlboro Pike
- Martha Street
- Mason Street
- Maygreen Avenue
- Milford Road
- Millvale Avenue
- Newkirk Avenue
- Old Silver Hill Road
- Orleans Avenue
- Parkland Court
- Parkland Drive
- Pumphrey Drive
- Roslyn Avenue
- Senator Avenue
- Sydney Avenue
- Viceroy Avenue

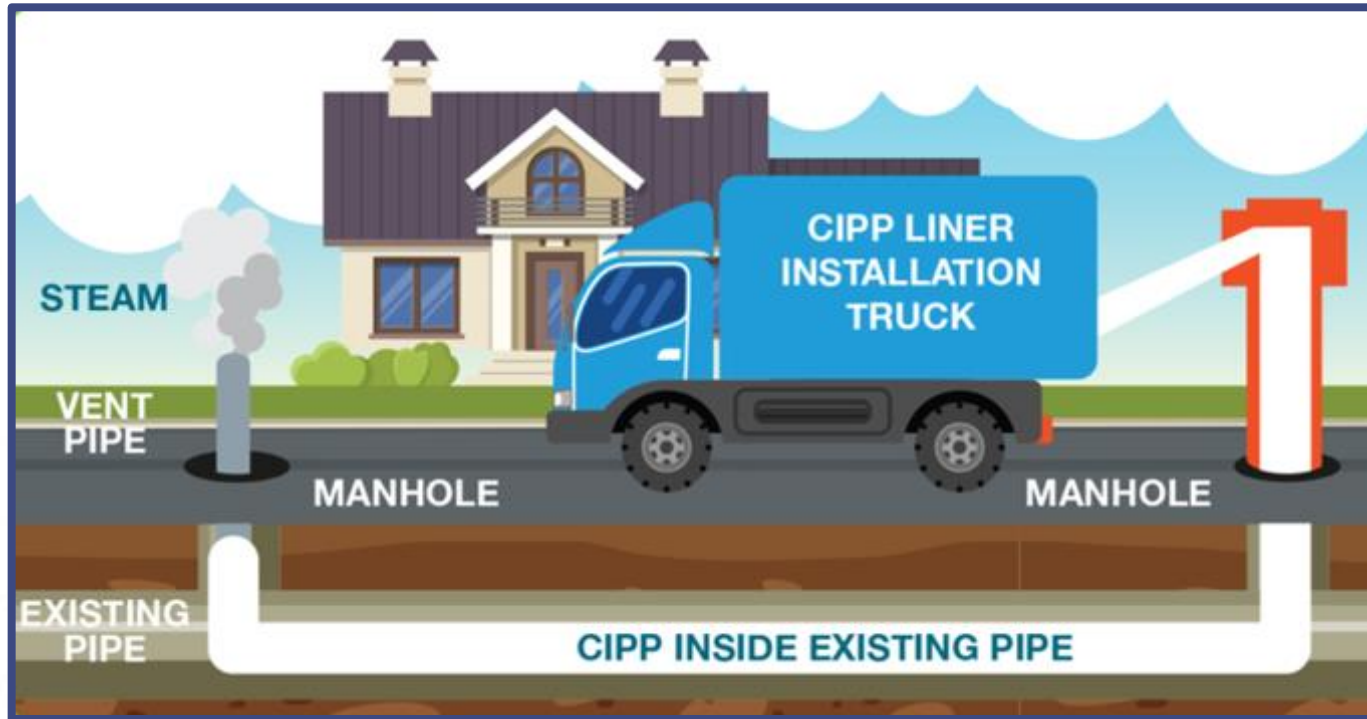


Sewer Rehabilitation Methods

- Sewer Rehabilitation
 - Lining
 - Grouting
- Manhole Rehabilitation
 - Frame and Cover
 - Replacement/Adjustment
 - Lining



Sewer Rehabilitation Method: Pipe Lining



Manhole Rehabilitation

Installing the vent pipe



Steam exiting the vent pipe



Before



After



Estimated Construction Schedule



**Construction schedule is estimated and weather dependent*

What to Expect During Construction

- Anticipated Work schedule: 9:00 a.m. to 3:30 p.m., Monday-Friday
 - Conditions at some locations may require different work hours
 - Residents will be notified at least two business days prior to all construction activities
- Construction activities may include:
 - Marking locations of utilities
 - Field inspections
 - Rehabilitation of sewer mains, manholes and laterals
 - Pavement restoration where digging is necessary
- WSSC Water coordinates with local and state agencies, as well as other utilities for all planned work to avoid potential conflict and minimize disturbances to neighborhoods



What to Expect During Construction

(cont.)

- Temporary construction access within parks and private properties constructed and maintained by WSSC Water until all rehabilitation work completed
- Right-of-Entry Agreements from owners of impacted properties obtained prior to construction
- Construction vehicles and bypass pumps on temporary access road occasionally

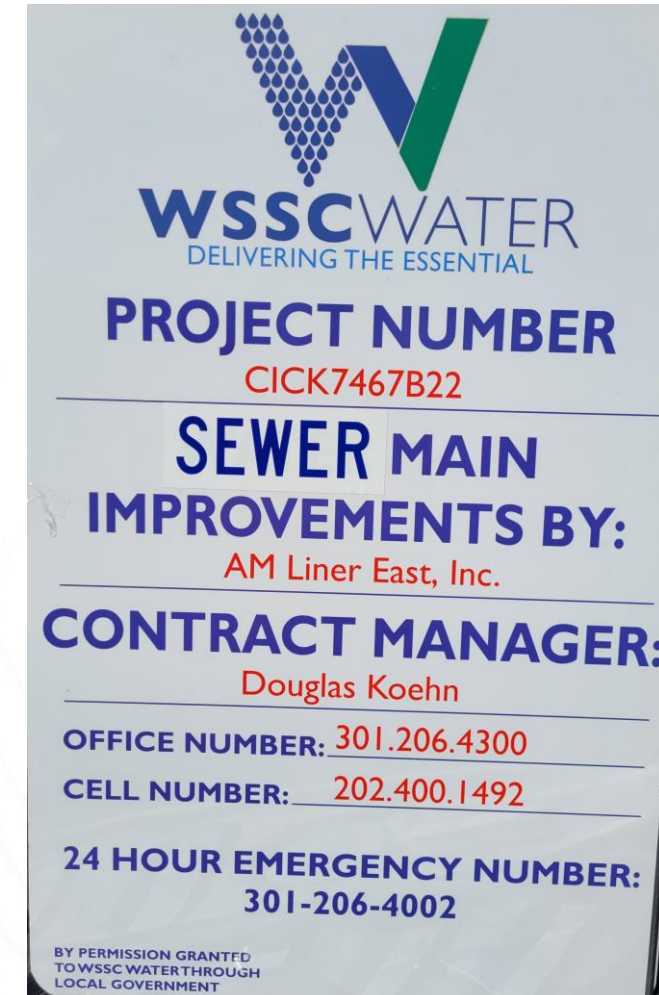
Traffic Impacts

- Certain construction activities may require temporary changes to traffic patterns
 - Traffic will be managed to minimize community disruptions
- Access will be maintained to homes during construction
 - Access into homes is **NOT** required
 - Access onto private property is generally **NOT** required
- Parking restrictions
 - WSSC Water will provide 48-hour advance notice (denoted by “No Parking” signs) before any parking restrictions
 - Any vehicles not removed from the designated area will be towed to a nearby street at no cost to owner
- Final restoration of sidewalks, roadways and landscaping will take place within 90 days of construction completion



Signage and Restoration

- Construction signs with contact persons placed throughout project area
- Projects completed during winter months are permanently paved and restored to their original state or better the following spring



Project Summary

- **Overview:** Existing sewer mains are near the end of their useful lives
- **Replacements:** WSSC Water is replacing the sewer mains and laterals up to the property line
- **Service:** WSSC Water will minimize service disruptions during construction
- **Coordination:** WSSC Water will coordinate work activities with property owners in the project area
- **Restoration:** WSSC Water will restore all areas impacted by construction activities at the end of the project
- **Objective:** WSSC Water's goal is to provide a reliable wastewater system to customers



Contact Us: (301) 206-4001
customerservice@wsscwater.com



CNS Customer Notification System

Receive alerts about WSSC Water-related incidents near your home, office, school, or other important addresses.

Register for *text or email* alerts on up to three addresses.

REGISTER AT WSSCWATER.COM/CNS

Customer Notification System (CNS)

REPORT A WATER OR SEWER EMERGENCY

301-206-4002

EmergencyCallCenter@wsscwater.com

WSSC Water Mobile App
Available on Apple App Store and Google Play

WSSC WATER
DELIVERING THE ESSENTIAL

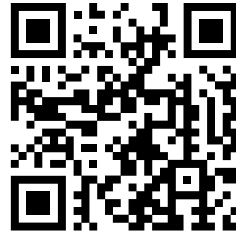
Report Water/Sewer Emergency

Helping Our Neighbors: **Water Bill Assistance**



Promise.

Sign up for an affordable, flexible and interest-free payment plan. **Customers with a past-due balance of \$50 or more are eligible.**

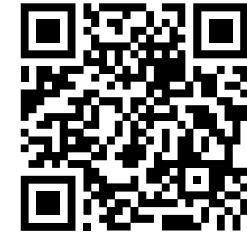


CUSTOMER ASSISTANCE PROGRAM (CAP)

CAP assists approved residential customers by **waiving fixed fees**, providing **free annual leak investigations** and **much more.**



Eligible customers can access the Water Fund multiple times, **up to \$500 per year.**



PipeER+

Provides a loan **up to \$10,000** to finance the repair, replacement or diagnostics of sewer or water on-property service line. The WSSC Federal Credit Union administers PipeER.



wsscwater.com/assistance



Questions?

