

SEWER ENHANCED GROUTING PROJECT PISCATAWAY BASIN – CLINTON

Project No. 23102884B&C

December 9, 2021

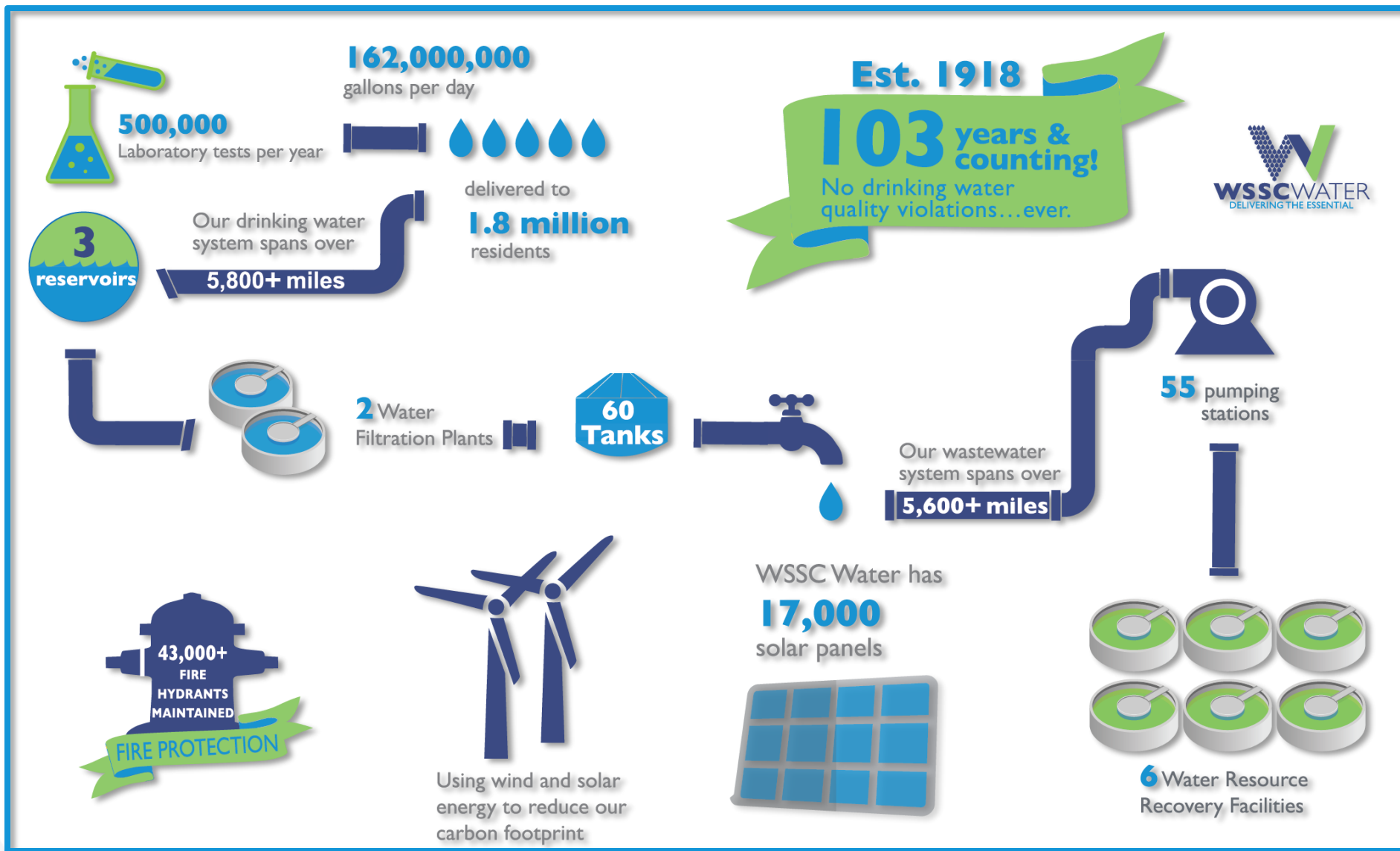
AGENDA

- Introduction to Project Team
- Sewer Rehabilitation Program Overview
- Project Overview
- Project Map
- Sewer Rehab Methods
- Estimated Construction Schedule
- What to Expect During Construction
- Project Summary
- Questions & Answers

Project Team

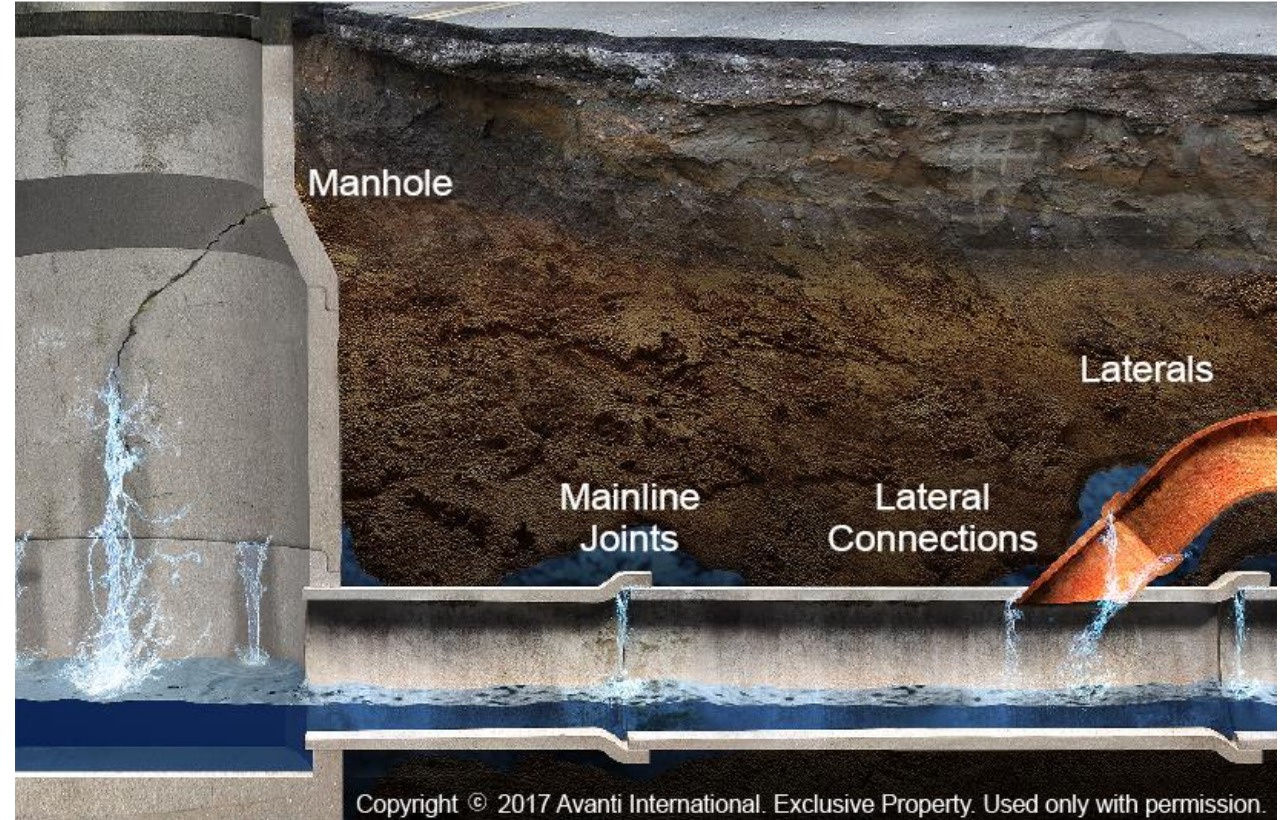
- Andres F. Villarraga, Project Manager
301-206-8247, Andres.Villarraga@wsscwater.com
- Jacob Pierce, Technical Contract Supervisor (Construction)
443-871-4062, Jacob.Pierce@wsscwater.com
- Stephen Billingsley, Customer Advocate
240-444-5803, Stephen.Billingsley@wsscwater.com
- Arcadis— Consultant Engineer/Construction Management

WSSC Water Overview



Sewer Rehabilitation Program Overview

- Repair (rehabilitating) and replacing our aging pipes as part of our comprehensive sewer rehabilitation program.
- Provide for stopping of Inflow and Infiltration in sewer mains and sewer connections that may result from soil settlement, root penetration, or corrosion, and often contribute to sewage overflows and backups into homes.

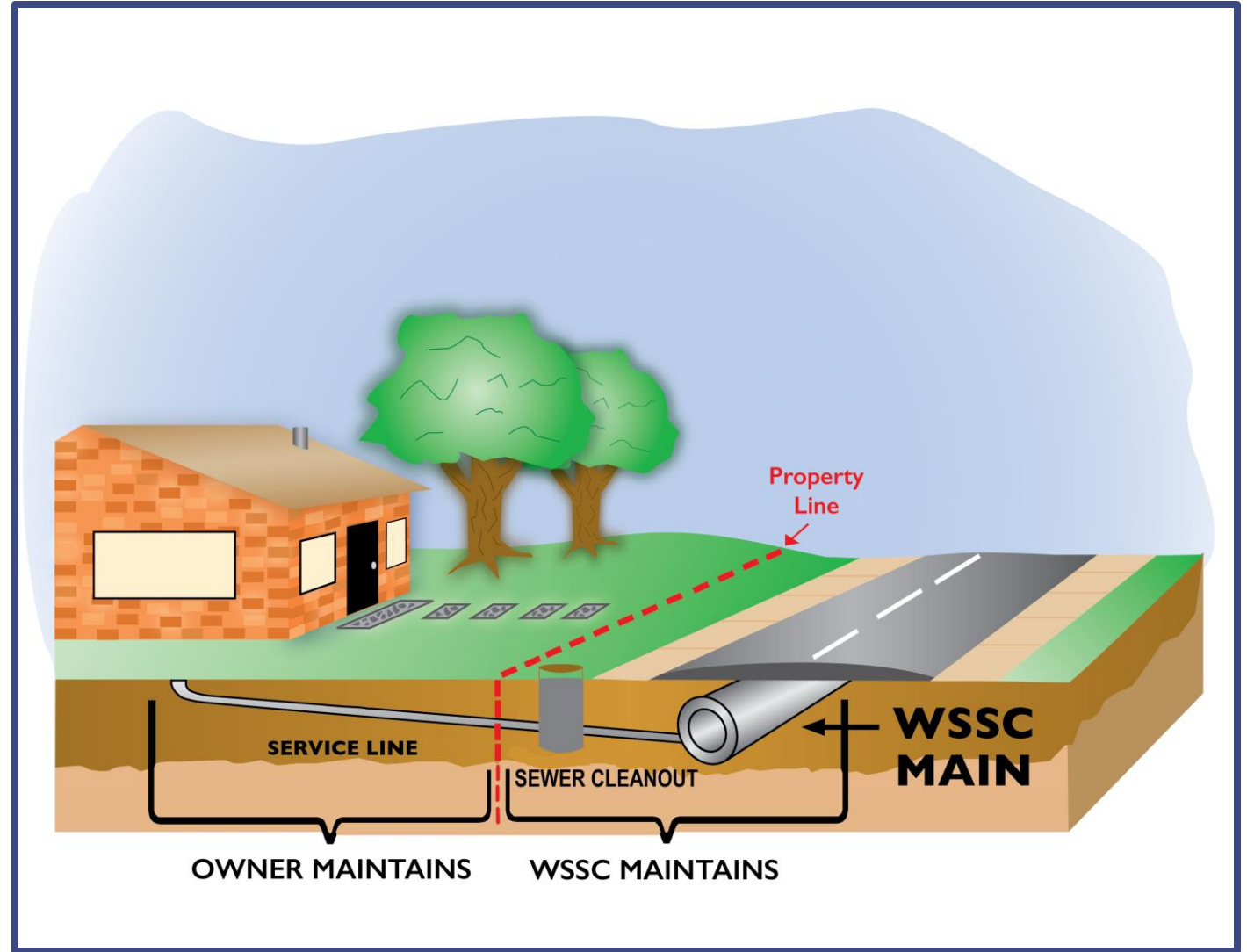


Project Overview

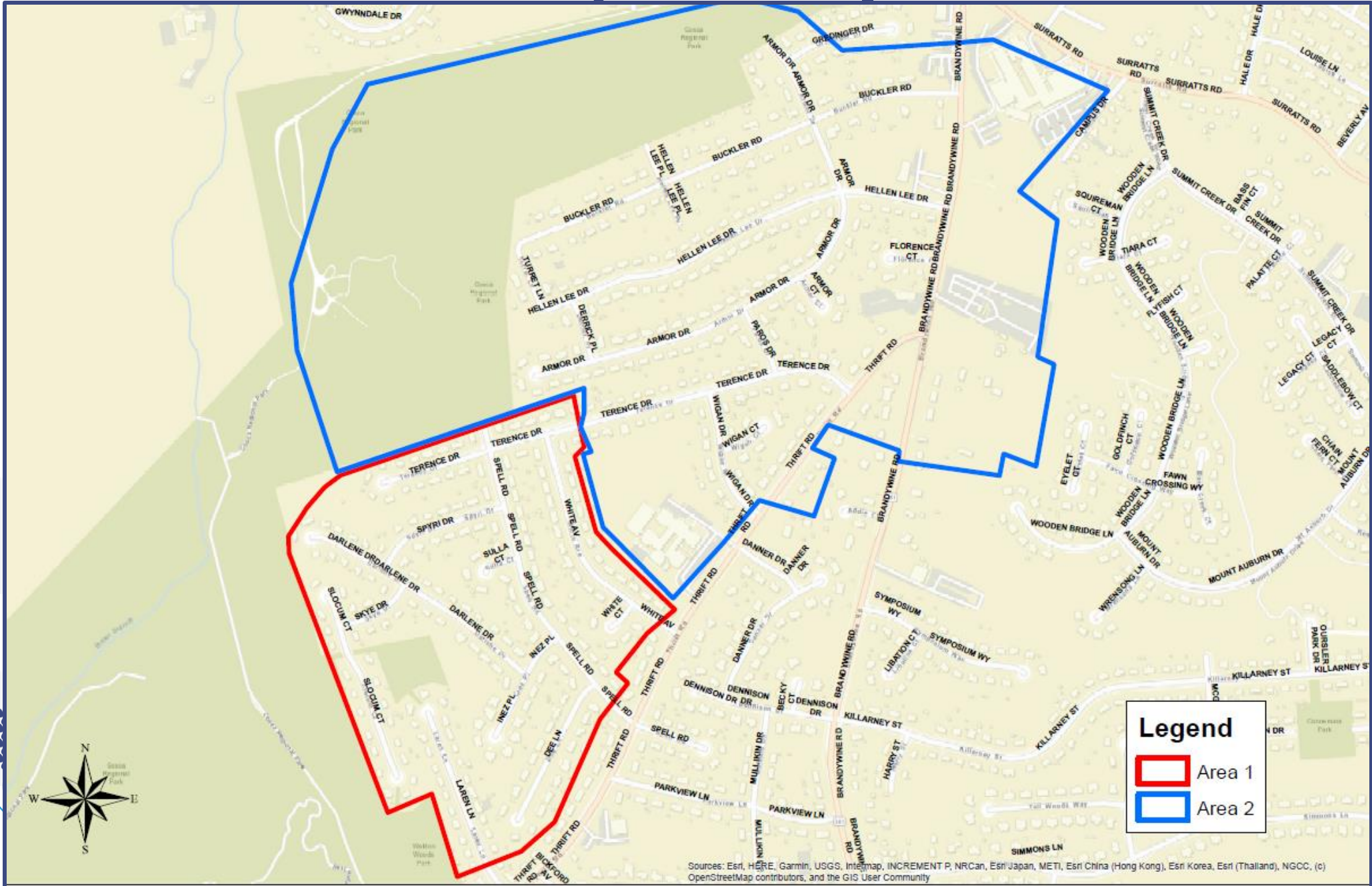
- Gravity sewer pipes and manholes will be rehabilitated using trenchless, for the most part, and open cut methods.
- The current sewer infrastructure was installed in the mid 1960's.
- Sewer house connections (laterals) will be located and rehabbed.
- Approximately **5.5** miles of gravity sewer pipes and 150 manholes will be rehabilitated or replaced.
- WSSC Water will restore areas affected by construction.

Project Overview

- Sewer Main Pipeline will be cleaned, and internally rehabilitated where possible.
- Sewer House Connections (sewer service lines) will be field located and rehabbed up-to the property line
- WSSC Water coordinates with local and state agencies, as well as other utilities for all planned work to avoid potential conflict and minimize disturbances to neighborhoods.



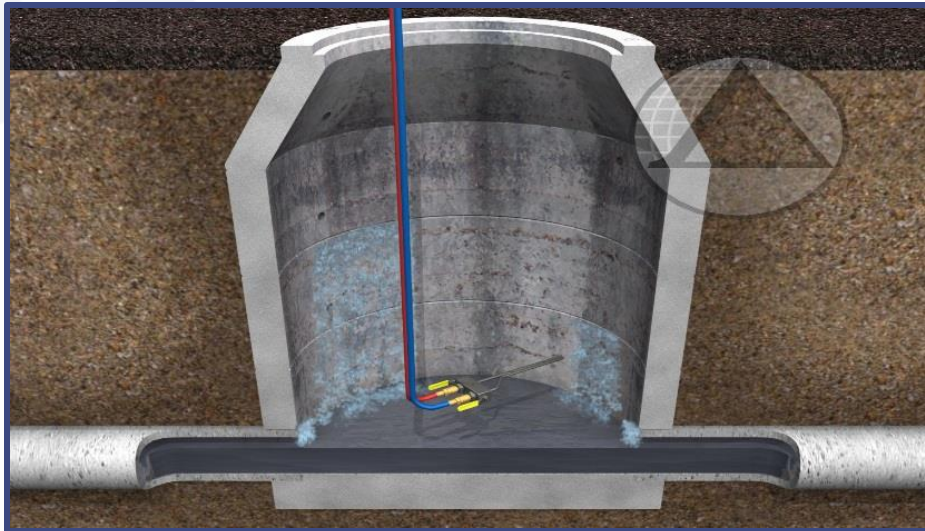
Project Map

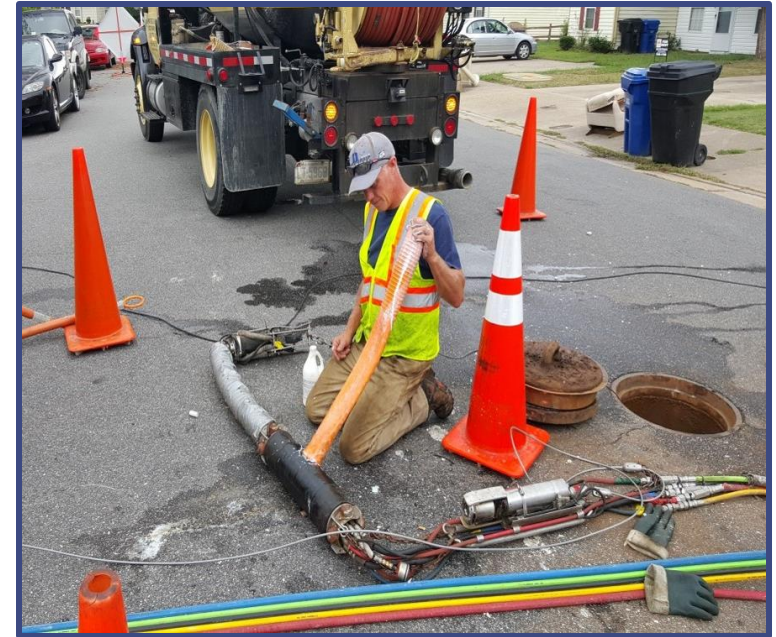






Sewer Repairs Types: Grout Technology





Sewer Repairs Types: Grout Field Work

Sewer Repairs Types: CIPP Lining



Sewer Repairs Types: Open Trench



Sewer Repairs Types: Manhole Rehabilitation



Estimated Construction Schedule

- Expected Construction Start Date: February/March 2022
- Estimated Construction Duration: 6-7 months
- Expected Construction Finish Date: September 2022 (Weather Permitting)

Operational Changes in response to Covid-19

- WSSC Water has implemented protocols that align with recommendations from local, state, and federal public health authorities.
- Working to minimize impact
 - Facial masks and physical distancing
- All WSSC Water employees and contractors are required to refrain from coming to work if displaying symptoms of COVID-19.
 - We have implemented robust internal contact tracing and quarantine requirements.
- Earlier notification to customers
 - Contact via handouts



What to Expect During Construction

- Anticipated Work schedule: 8:00 a.m. to 4:00 p.m., Monday-Friday
 - Conditions at some locations may require different work hours
 - Residents will be notified at least 2 days prior to all construction activities
- Construction activities may include:
 - Marking locations of utilities
 - Field Inspections
 - Rehabilitation of sewer mains, manholes and laterals (primarily in the roadway)
 - Pavement restoration where digging is necessary
- Reliable sewer service will be maintained during construction



What to Expect During Construction

- Street parking will be limited on streets with active construction.
 - 48-hours advanced notification will be provided.
 - NO PARKING signs will be posted.
 - All roads will remain accessible at all times during construction. However, certain activities may require temporary closures and delays.
- Access from the public roadway to businesses and homes will be maintained at all times.
- Entry into homes is NOT required.
- Tree removal, only when necessary, pruning and/or stump removal.
 - New trees will be planted where trees needed to be removed
 - Trees on private property will not be removed

Project Summary

- WSSC Water will be rehabilitating pipes and manholes as well as service house connections.
- WSSC Water is committed to minimizing the impact of construction.
- WSSC Water will restore all areas impacted by construction activities at the end of the project.
- We understand the inconvenience these types of projects can cause and appreciate your patience as we work to provide safe, seamless and satisfying water and sewer services, for our customers every day.
- Sign-up at www.wsscwater.com/CNS, to receive emails and/or text alerts so you can keep updated on work in your neighborhood.

QUESTIONS?

