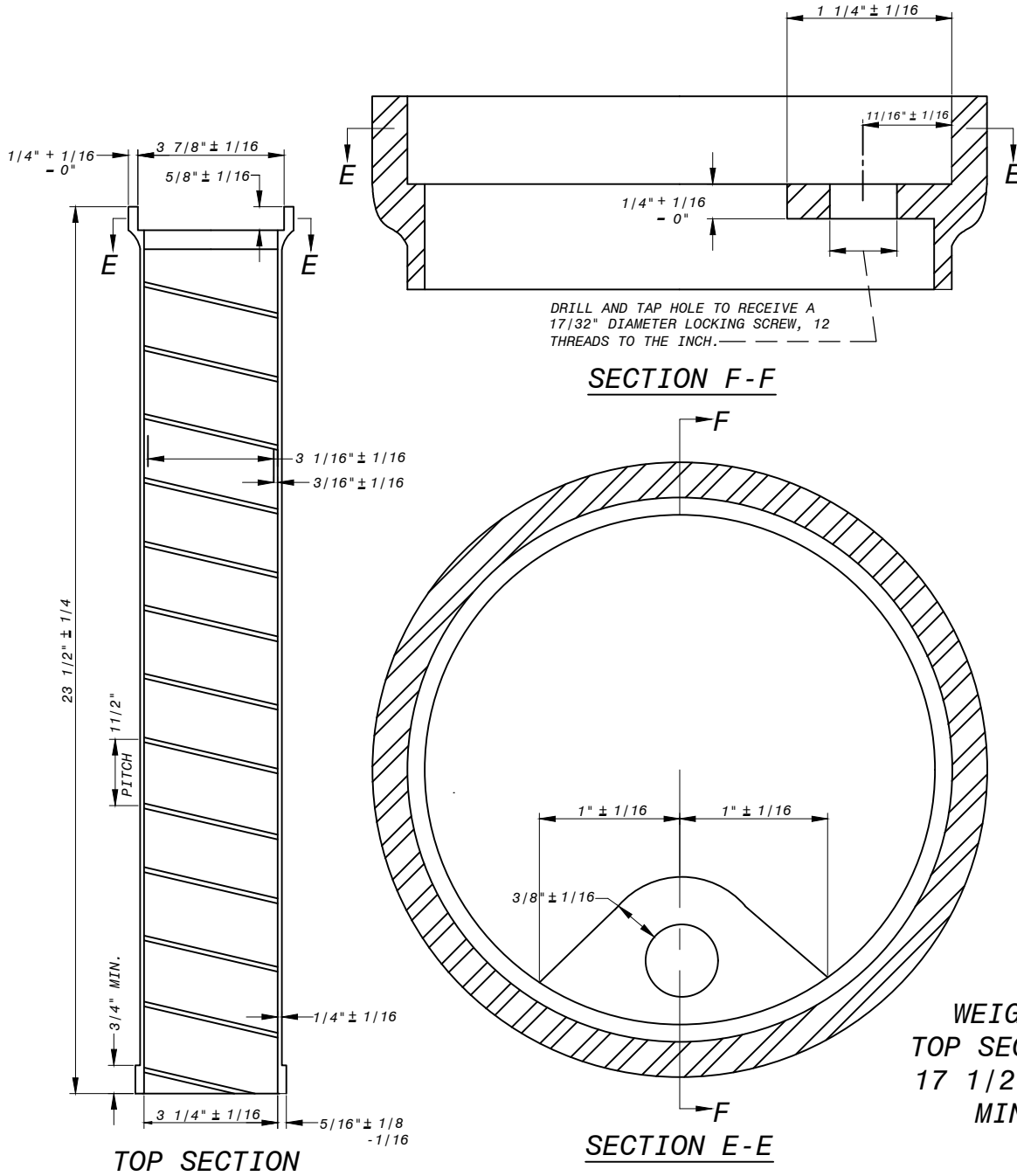


APPLICABLE STOCK NO.  
4880-9006-9



- ALL CASTINGS ARE TO BE CLEANED BY AN APPROVED PROCESS AND COATED WITH AN APPROVED SOLVENT-BASED ASPHALT PAINT.
- ALL SECTIONS SHOWN TO BE GRAY IRON CASTINGS, ASTM. A-48 CLASS NO.25 MIN.
- REFER TO SPECIFICATIONS FOR APPROVED CURB BOX ROD

WASHINGTON  
SUBURBAN  
SANITARY  
COMMISSION

REVISIONS:  
APPROVED: May 3, 2021 | 9:23 PM EDT

DocuSigned by:  
*Jaime Garcia*

B7DBE23489C84BD  
MATERIALS MANAGEMENT DIVISION MANAGER

PROCUREMENT AND MANUFACTURING DETAIL

**CURB BOX TOP SECTION**

**P&M**  
**2.4**