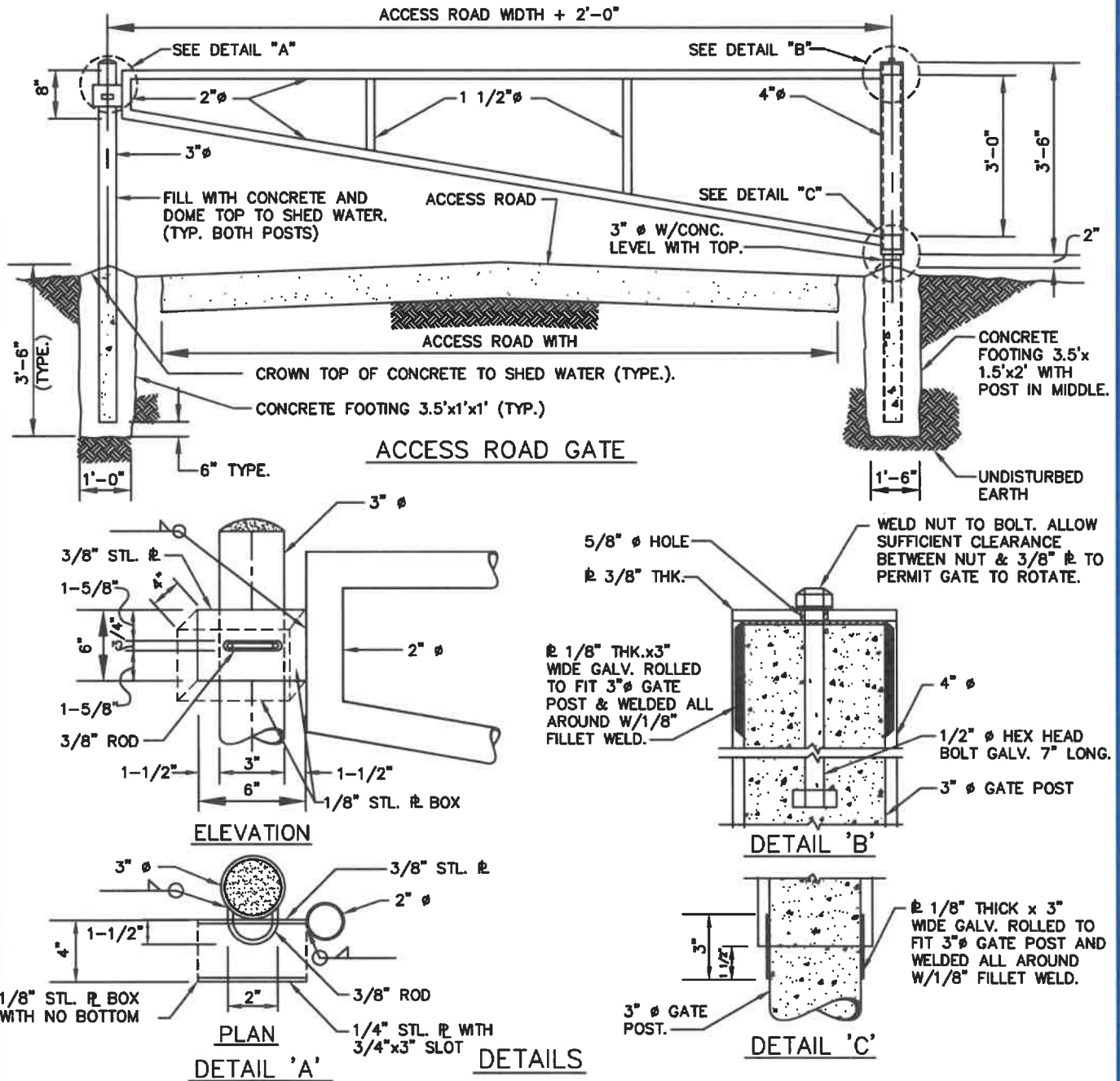


NOTES

1. ALL METAL USED IN THE MANUFACTURE OF THE ACCESS ROAD GATE TO BE HOT DIP GALVANIZED. ALL WELDS & PIPE TO BE PAINTED & TOUCHED UP IN ACCORDANCE WITH SPECIFICATION AND IN ACCORDANCE WITH MANUFACTURERS RECOMMENDATIONS.
2. ALL JOINTS TO BE WELDED ALL AROUND WITH 3/16" WELDS.
3. ALL PIPE TO BE SCHEDULE 40 STEEL, DIAMETERS SHOWN ARE NOMINAL PIPE SIZE.
4. PADLOCK WILL BE FURNISHED BY WSSC.
5. CONTRACTOR SHALL PROVIDE AN ADDITIONAL 3"Ø POST WITH 3/8" ROD. LOCATE TO HOLD GATE IN AN OPEN POSITION 90° FROM THAT SHOWN BELOW.
6. GATE TO SWING IN TOWARDS WSSC PROPERTY.
7. WIDTH OF GATE NOT TO EXCEED 16 FEET.



WASHINGTON
SUBURBAN
SANITARY
COMMISSION

APPROVED: 6/17/21
Mike Harner
Chief Engineer

STANDARD DETAIL
ACCESS ROAD GATE

M
11.0