

# PISCATAWAY BASIN SANITARY SEWER SYSTEM REHABILITATION

Project Nos. **CICRLLLR685 IL20**  
**CICRLLLR7121B21**

May 26, 2021

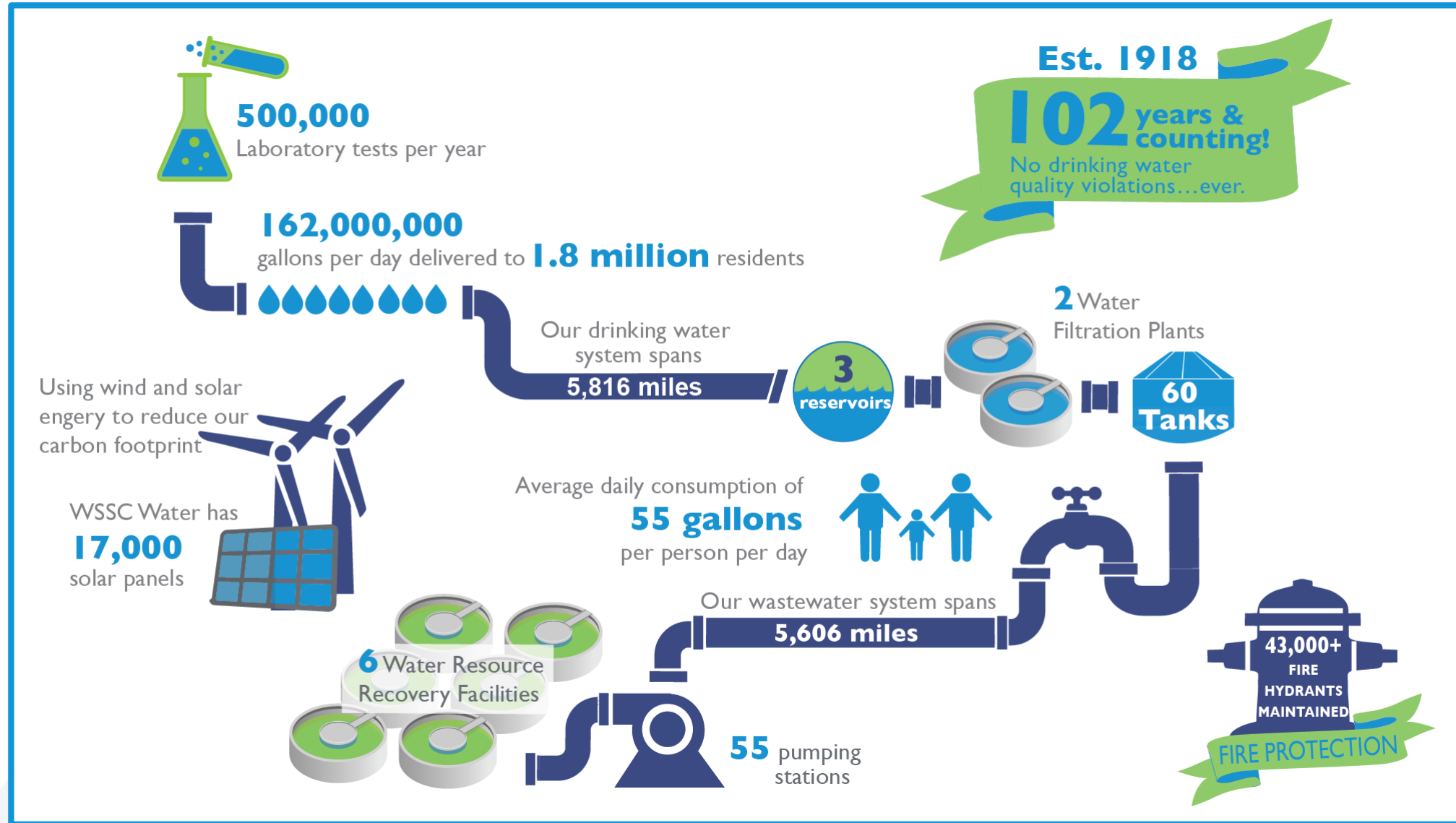
# AGENDA

- Introduction to Project Team
- Sewer Rehabilitation Program Overview
- Project Overview
- Project Map
- Sewer Rehab Methods
- Estimated Construction Schedule
- What to Expect During Construction
- Project Summary
- Questions & Answers

# Project Team

- Omar Muhammad, Design Project Manager  
301-206-8560, [Omar.Muhammad@wsscwater.com](mailto:Omar.Muhammad@wsscwater.com)
- John Papademas, Design Project Manager  
301-206-8933, [John.Papademas@wsscwater.com](mailto:John.Papademas@wsscwater.com)
- Jacob Pierce, Technical Contracts Supervisor (Construction)  
301-206-2431, [Jacob.Pierce@wsscwater.com](mailto:Jacob.Pierce@wsscwater.com)
- Stephen Billingsley, Customer Advocate  
240-444-5803, [Stephen.Billingsley@wsscwater.com](mailto:Stephen.Billingsley@wsscwater.com)

# WSSC Water Overview



# Sewer Rehabilitation Program Overview

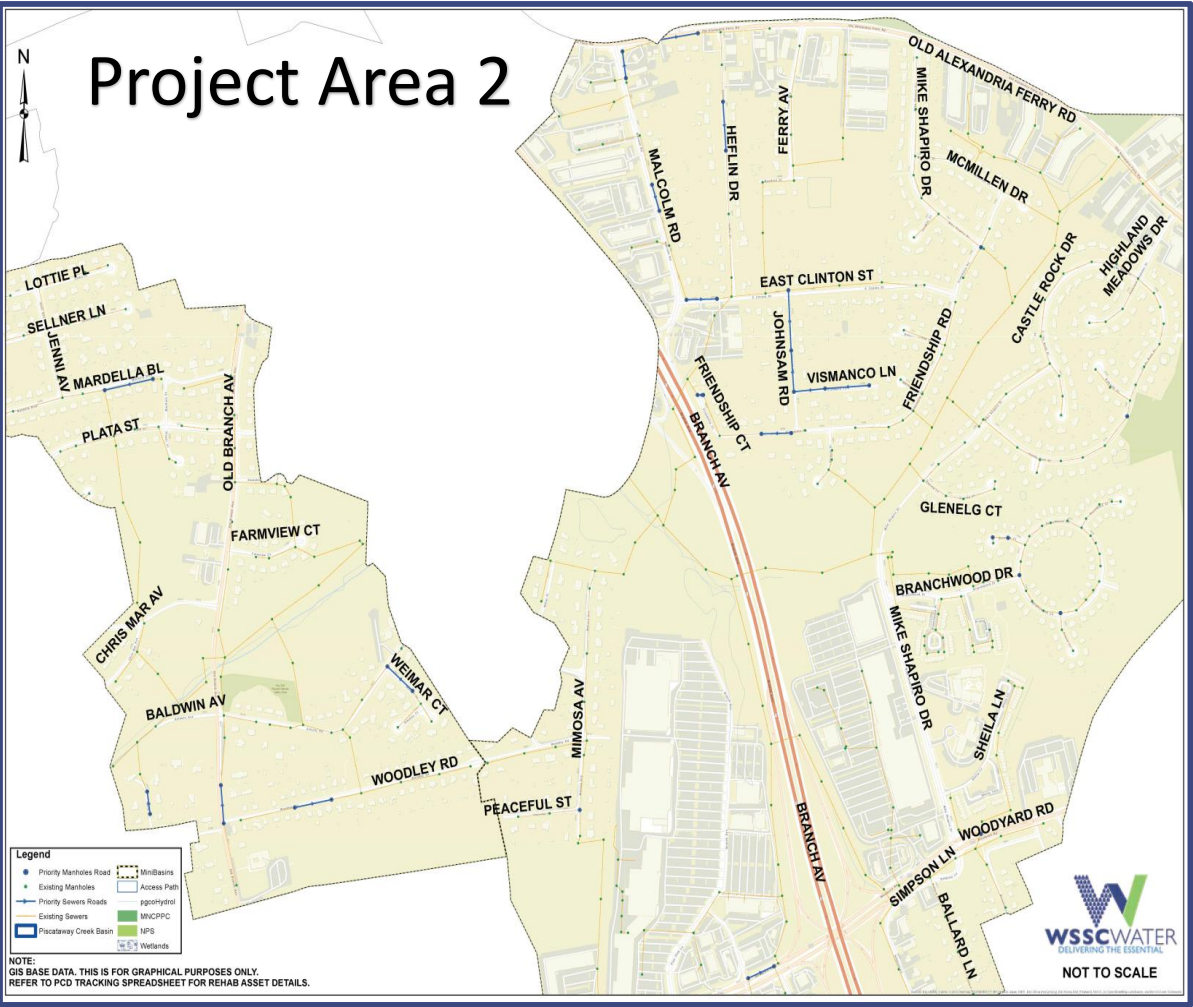
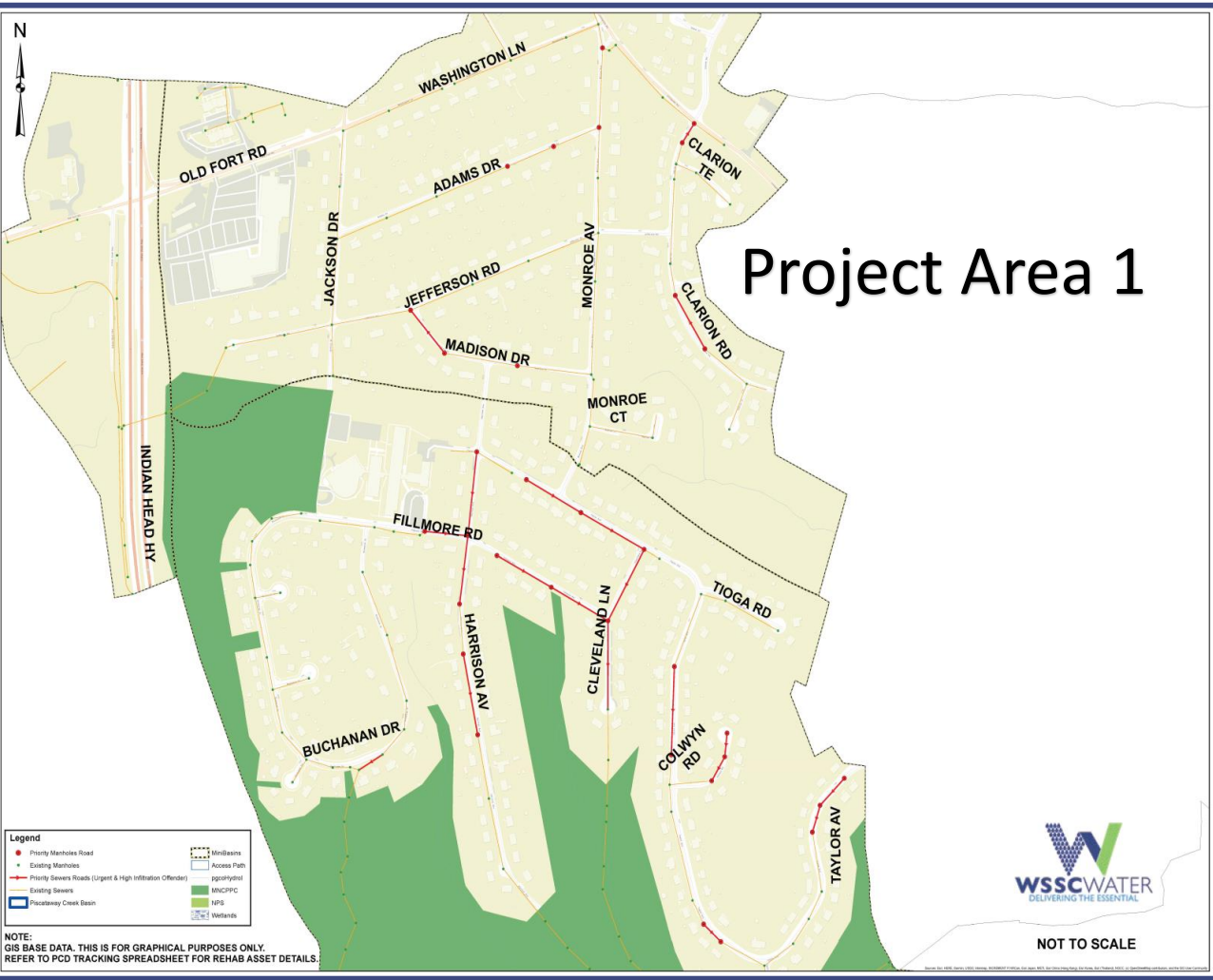
- WSSC Water is strategically replacing and rehabilitating our aging water and sewer pipes throughout our service area, a part of our effort to enhance service and reliability to our customers.
- Provide for correcting structural deficiencies in sewer mains that may result from soil settlement, root penetration, or corrosion, and often contribute to sewage overflows and backups into homes.
- The completed projects will extend the life of the sewer pipes by at least 50 years.

# Project Overview

- Sewer pipes and manholes will be rehabilitated using primarily Trenchless methods.
- Pipes and manholes that are in very poor condition will require excavation to replace or repair them.
- Approximately **1.82** miles of sewer pipes will be rehabilitated or replaced;
- Approximately **72** manholes will be rehabilitated or replaced.
- Sewer house service connections (up to property lines) will be replaced and reconnected where sewer pipes are replaced.



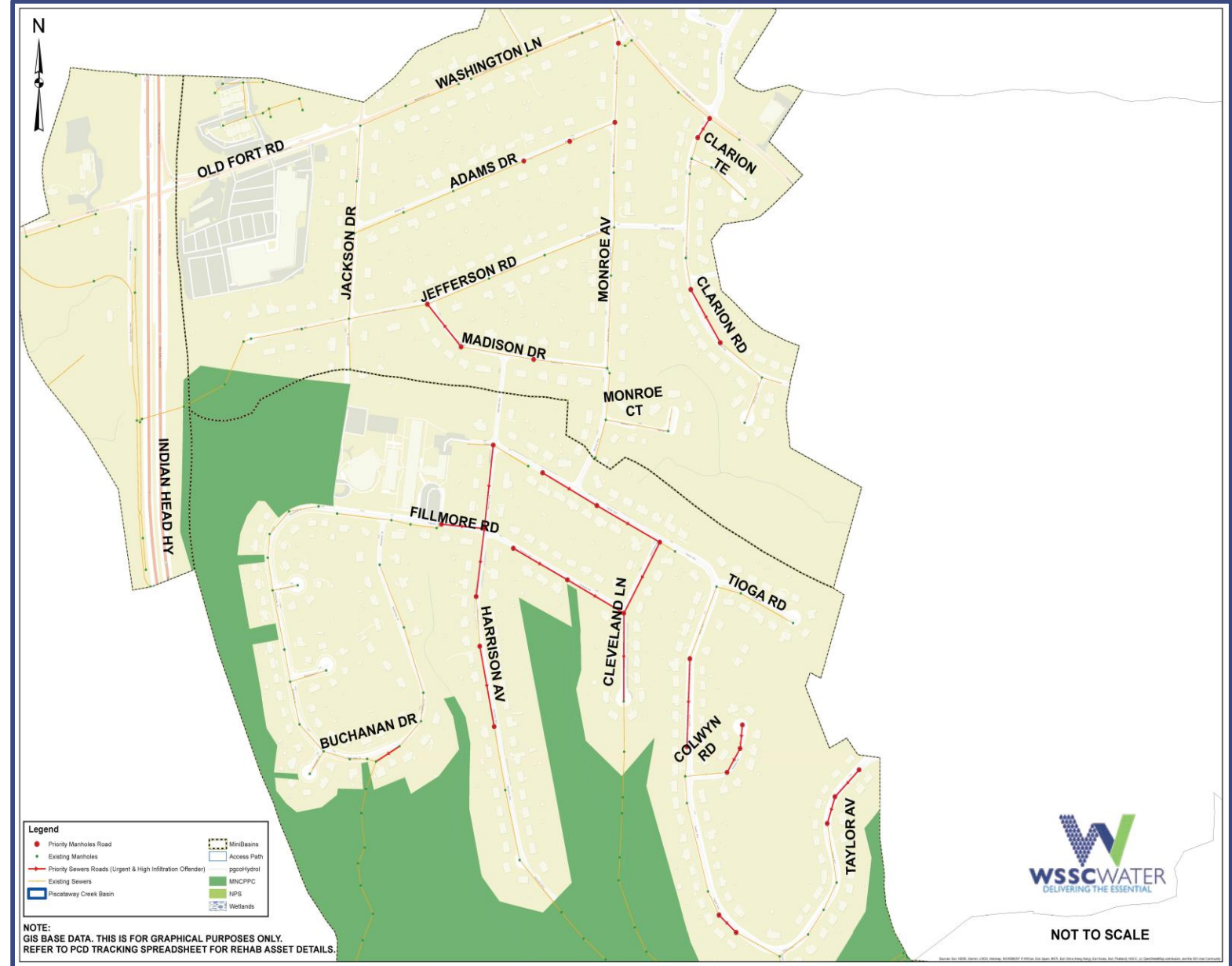
# Project Maps



# Project Area I, Project No. CICRLLLR685 IL20

## Directly Impacted Streets

Buchanan Drive  
Harrison Avenue  
Cleveland Avenue  
Fillmore Road  
Taylor Avenue  
Colwyn Road  
Madison Drive  
Clarion Road

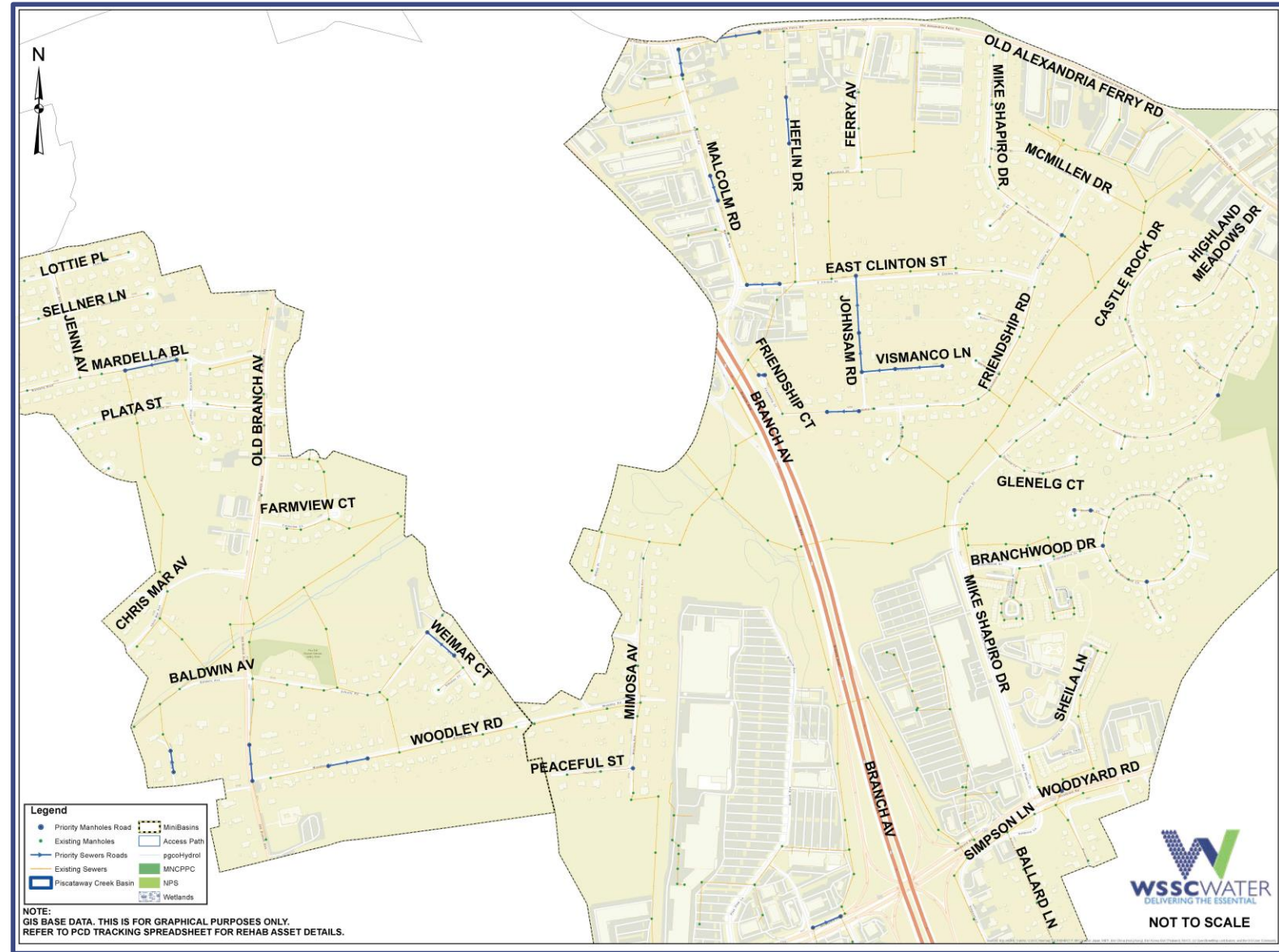




# Project Area 2, Project No. CICRLLLR7|2|B2|

## Directly Impacted Streets

North Drive  
Mardella Boulevard  
Old Branch Avenue  
Woodley Road  
Weimar Court  
Heflin Drive  
Old Alex Ferry Road  
Malcolm Road  
Friendship Court  
Friendship Road  
Johnsam Road  
Vismanco Lane  
East Clinton Street



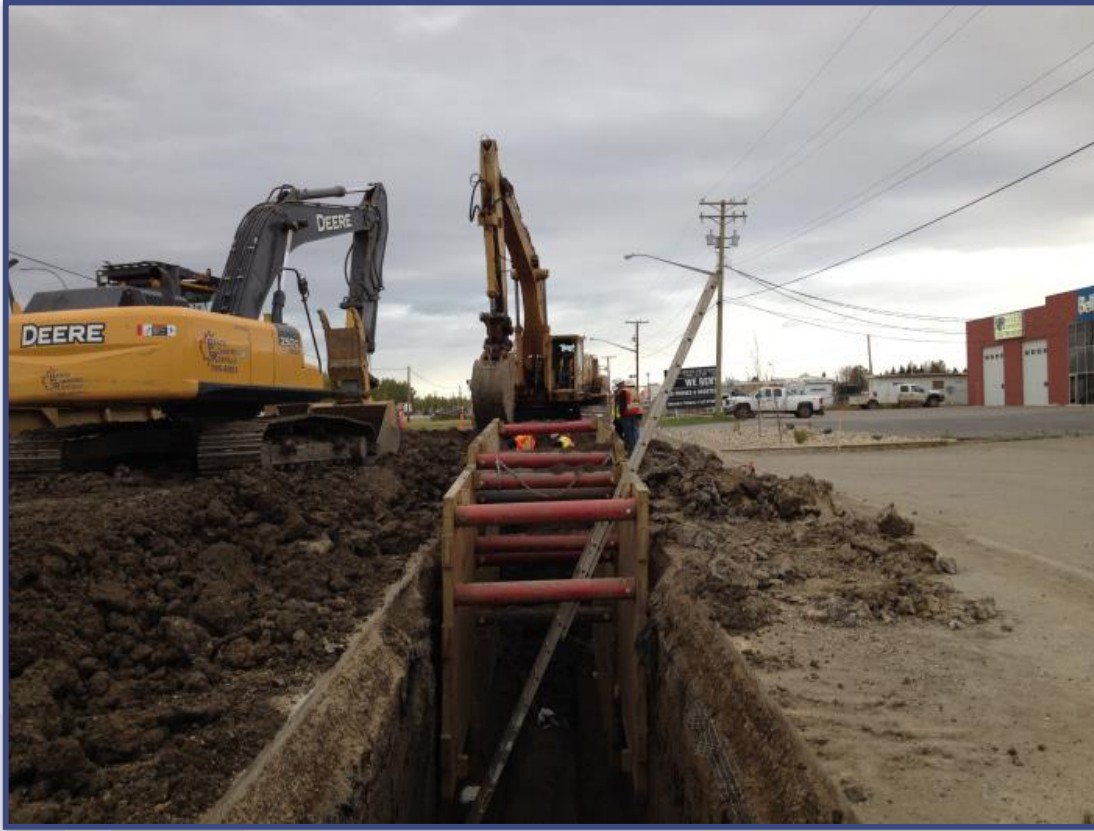


# Sewer Repairs Types: Trenchless Technology





# Sewer Repairs Types: Open Trench



# Sewer Repairs Types: Manhole Rehabilitation





# Estimated Construction Schedule

- **Expected Construction Start Date: Fall 2021**
- **Estimated Construction Duration: 1 Year**
- **Expected Construction Finish Date: Fall 2022 (Weather Permitting)**



# Operational Changes in response to Covid-19

- WSSC Water has implemented protocols that align with recommendations from local, state, and federal public health authorities.
- Working to minimize impact
  - Facial masks (when indoors) and physical distancing
- All WSSC Water employees and contractors are required to refrain from coming to work if displaying symptoms of COVID-19.
  - We have implemented robust internal contact tracing and quarantine requirements.
- Earlier notification to customers
  - Contact via handouts



# What to Expect During Construction

- Anticipated Work schedule: 9:00 a.m. to 3:00 p.m., Monday-Friday
  - Conditions at some locations may require different work hours
  - Residents will be notified at least 2 days prior to all construction activities
- Construction activities may include:
  - Marking locations of utilities
  - Field Inspections
  - Rehabilitation of sewer mains, manholes and laterals (primarily in the roadway)
  - Pavement restoration where digging is necessary
- Reliable sewer service will be maintained during construction



# What to Expect During Construction

- Street parking will be limited on streets with active construction.
  - 48-hours advanced notification will be provided.
  - NO PARKING signs will be posted.
  - All roads will remain accessible at all times during construction. However, certain activities may require temporary closures and delays.
- Access from the public roadway to businesses and homes will be maintained at all times.
- Entry into homes is NOT required.
- Tree removal, only when necessary, pruning and/or stump removal.
  - New trees will be planted where trees needed to be removed
  - Trees on private property will not be removed

# Project Summary

- WSSC Water will be rehabilitating pipes, manholes, and some laterals.
  - Lateral work will not extend past the property line.
- WSSC Water is committed to minimizing the impact of construction.
- WSSC Water will restore all areas impacted by construction activities at the end of the project.
- We understand the inconvenience these types of projects can cause and appreciate your patience as we work to provide safe, seamless and satisfying water and sewer services, for our customers every day.
- Sign-up at [www.wsscwater.com/CNS](http://www.wsscwater.com/CNS), to receive emails and/or text alerts so you can keep updated on work in your neighborhood.

# QUESTIONS?

