



Muddy Branch Basin Residential Roads Sewer Rehabilitations Project No. CI/CR/LR6962A20

April 21, 2021

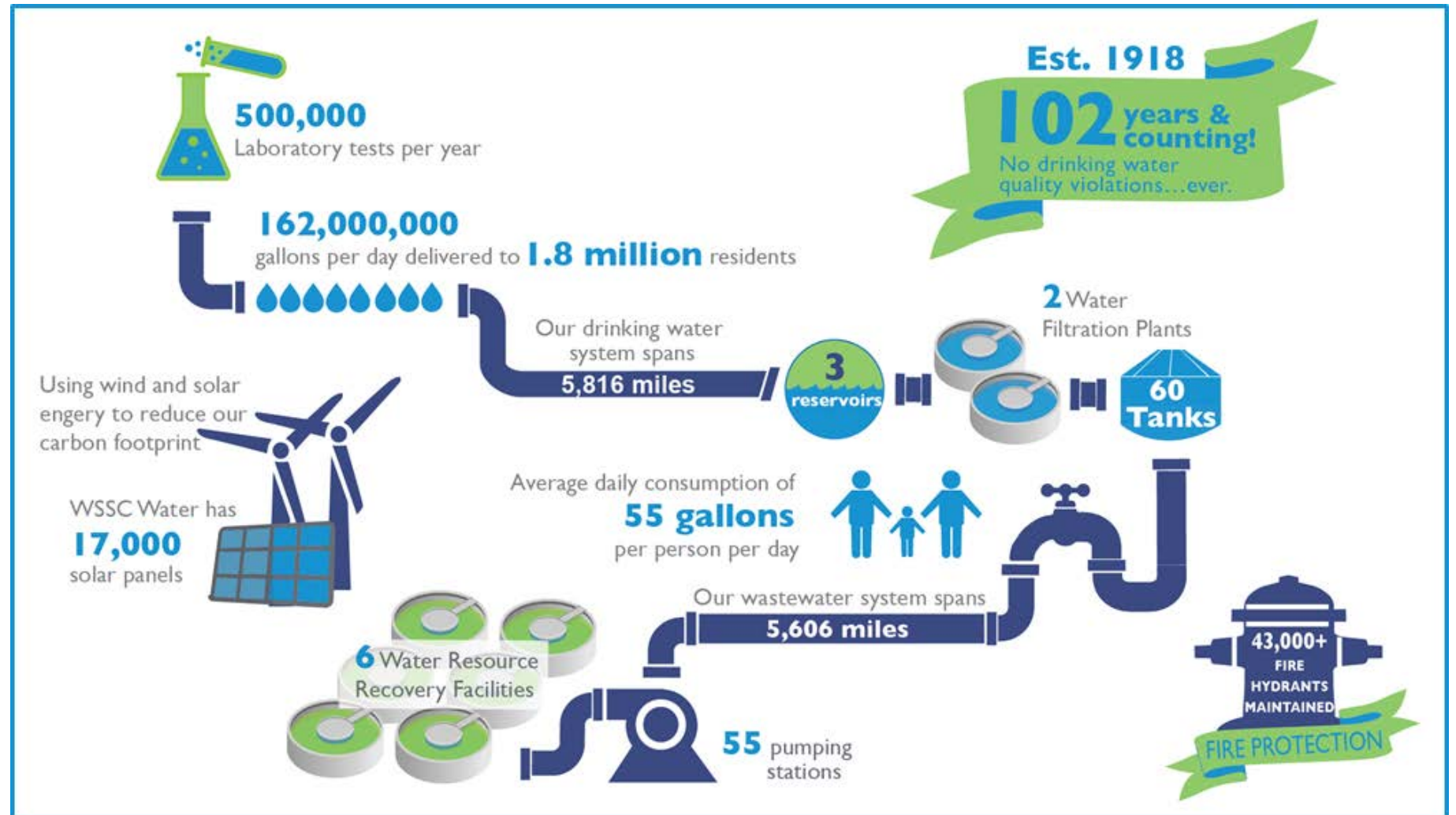
Agenda

- Introduction to Project Team
- Sewer Rehabilitation Program Overview
- Project Overview
- Project Map
- Sewer Rehab Methods
- Estimated Construction Schedule
- Operation Changes in response to Covid-19
- What to Expect During Construction
- Project Summary
- Questions & Answers

Project Team

- Walid Halboni, Design Project Manager
301-206-8732, Walid.Halboni@wsscwater.com
- Michael Ballantyne, Technical Contracts Supervisor
240-508-3253, Michael.Ballantyne@wsscwater.com
- Brandon Stewart, Customer Advocate
301-642-1712, Brandon.Stewart@wsscwater.com
- Engineering Design Consultants, Remington & Vernick Engineers

WSSC Water Overview



Sewer Rehabilitation Program Overview

- Replace and repair our aging pipes as part of our comprehensive sewer rehabilitation program.
- Provide for correcting structural deficiencies in sewer mains that may result from soil settlement, root penetration, or corrosion, and often contribute to sewage overflows and backups into homes.
- The completed projects will extend the life of the sewer pipes by at least 50 years.

Project Overview

- Sewer pipes and manholes will be rehabilitated using primarily Trenchless methods.
- Pipes and manholes that are in very poor condition will require excavation to replace or repair them.
- Approximately 1 miles of sewer pipes will be rehabilitated or replaced;
- Approximately **27** manholes will be rehabilitated or replaced.
- Sewer house service connections (up to property lines) will be replaced and reconnected where sewer pipes are replaced.
- WSSC Water will restore areas affected by construction.

Overall Site Map

TRENCHLESS REHABILITATION:

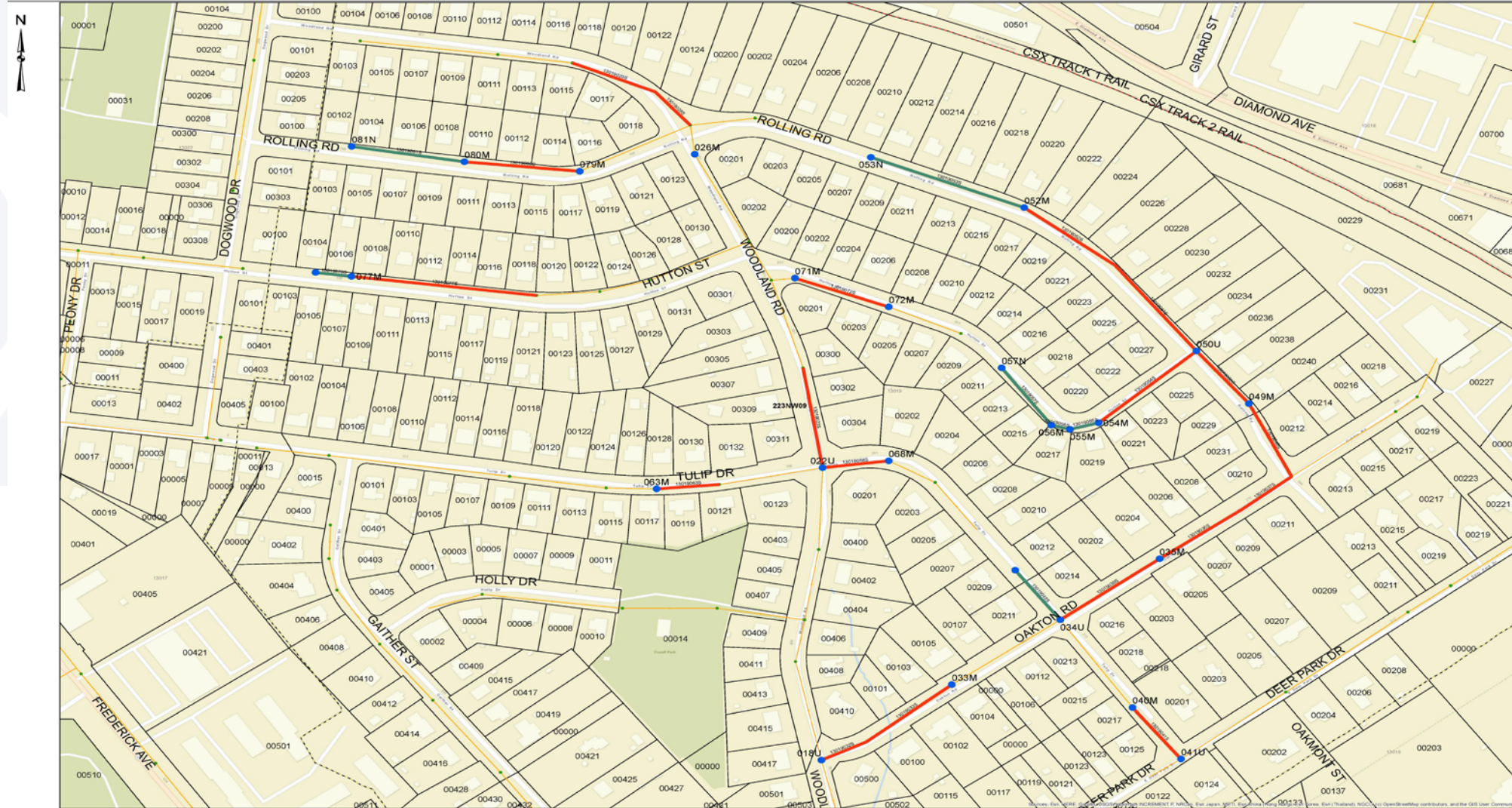
- Woodland Road
- Rolling Road
- Hutton Street
- Oakton Road
- Tulip Drive

TRENCHED REHABILITATION:

- Rolling Road
- Hutton Street
- Tulip Drive

Legend

- Manholes to be Rehabilitated
- TRENCHED REHABILITATION (EXCAVATION REQUIRED)
- TRENCHLESS REHABILITATION (NO EXCAVATION REQUIRED)
- WSSC 200FT
- Existing Manholes
- Existing Sewers
- BASINS
- MiniBasins



Sewer Repairs Types: Trenchless Technology



Sewer Repairs Types: Open Trench



Sewer Repairs Types: Manhole Rehabilitation



Estimated Construction Schedule

Expected Construction Start: May 2021

Expected Construction Completion: May 2022

Construction schedules are estimated and weather permitting

Operational Changes in response to Covid-19

- WSSC Water has implemented protocols that align with recommendations from local, state, and federal public health authorities.
- Working to minimize impact
 - Facial masks and physical distancing
- All WSSC Water employees and contractors are required to refrain from coming to work if displaying symptoms of COVID-19.
 - We have implemented robust internal contact tracing and quarantine requirements.
- Earlier notification to customers
 - Contact via handouts



What to Expect During Construction

- Anticipated Work schedule: 9:00 a.m. to 3:00 p.m., Monday-Friday
 - Conditions at some locations may require different work hours
 - Residents will be notified at least 2 days prior to all construction activities
- Construction activities may include:
 - Marking locations of utilities
 - Field Inspections
 - Rehabilitation of sewer mains, manholes and laterals (primarily in the roadway)
 - Pavement restoration where digging is necessary
- Reliable sewer service will be maintained during construction



What to Expect During Construction

- Street parking will be limited on streets with active construction.
 - 48-hours advanced notification will be provided.
 - NO PARKING signs will be posted.
 - All roads will remain accessible at all times during construction. However, certain activities may require temporary closures and delays.
- Access from the public roadway to businesses and homes will be maintained at all times.
- Entry into homes is NOT required.
- Tree removal, only when necessary, pruning and/or stump removal.
 - New trees will be planted where trees needed to be removed
 - Trees on private property will not be removed

Traffic Impacts

- Certain construction activities may require temporary changes to traffic patterns
 - Traffic will be managed to minimize community disruptions
- Access will be maintained to homes during construction
 - Access into homes is **NOT** required
 - Access onto private property is generally **NOT** required
- Parking restrictions
 - WSSC Water will provide 48-hour advance (denoted by “No Parking” signs) notice prior to any parking restrictions
 - Any vehicles that have not been removed from the designated area will be towed to a nearby street at no cost to the owner.
- Final restoration of sidewalks, roadways and landscaping will take place within 90 days of construction completion.



Project Summary

- WSSC Water will be rehabilitating pipes, manholes, and some laterals.
 - Lateral work will not extend past the property line.
- WSSC Water is committed to minimizing the impact of construction.
- WSSC Water will restore all areas impacted by construction activities at the end of the project.
- We understand the inconvenience these types of projects can cause and appreciate your patience as we work to provide safe, seamless and satisfying water and sewer services, for our customers every day.
- Sign-up at www.wsscwater.com/CNS, to receive emails and/or text alerts so you can keep updated on work in your neighborhood.

QUESTIONS?

