



Riggs Rd Water Main Replacement

BR6304A17

March 17, 2021

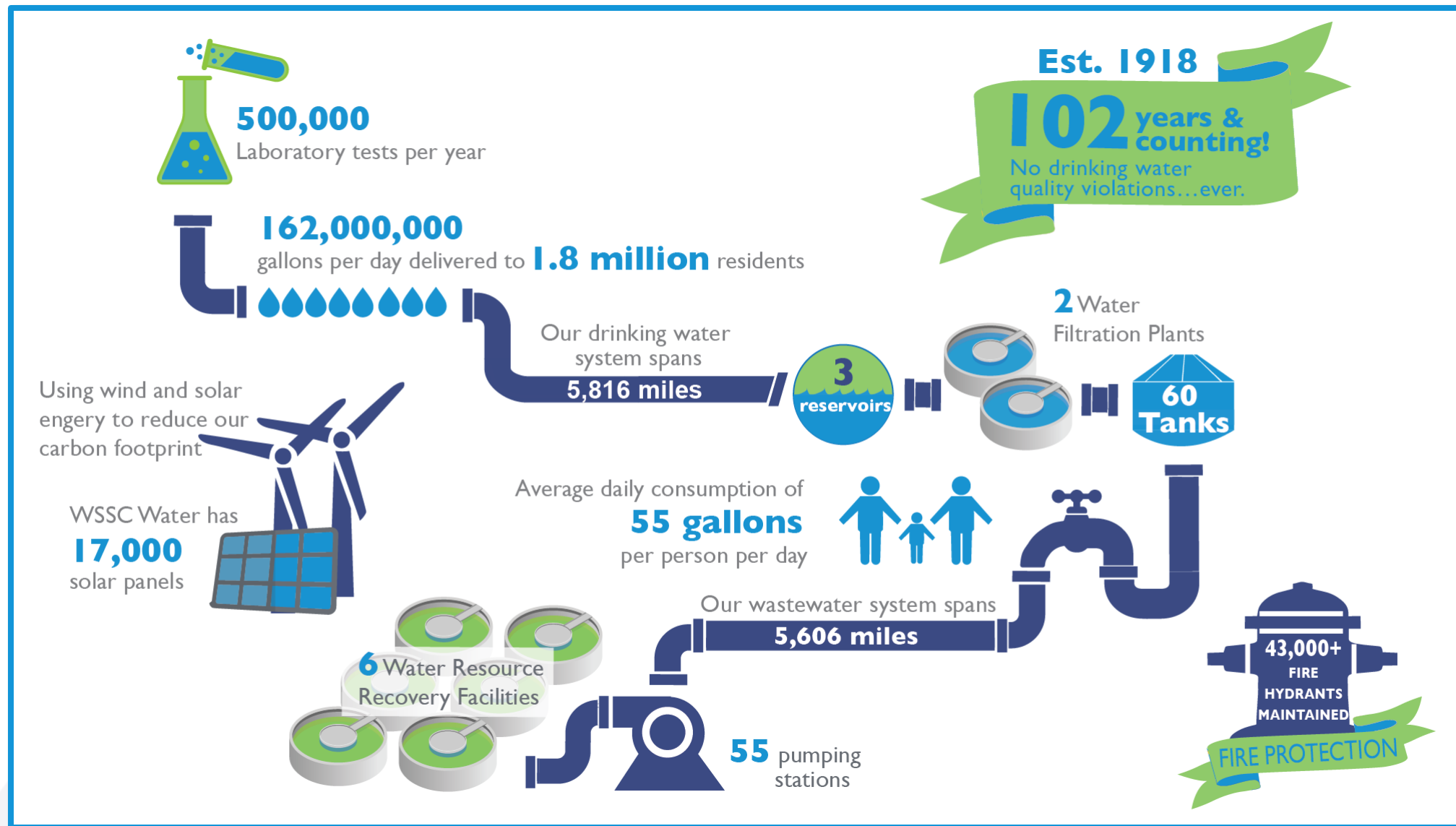
AGENDA

- Introduction to Project Team
- WSSC Water Overview
- Project Overview
- Project Map
- Estimated Construction Schedule
- What to Expect During Construction
- Project Summary
- Questions & Answers

Project Team

- Ahwi Quacoe, WSSC Design Project Manager
301-206-8512, ahwi.Quacoe@wsscwater.com
- Collins Njoku, Technical Contracts Supervisor (Construction)
240-882-2742, Collins.Njoku@wsscwater.com
- David Wilkins, Customer Advocate
301-648-6953, david.wilkins@wsscwater.com
- Mott MacDonald, LLC, Engineering Design Consultants
- Rivers Construction, Construction Contractor

WSSC Water Overview

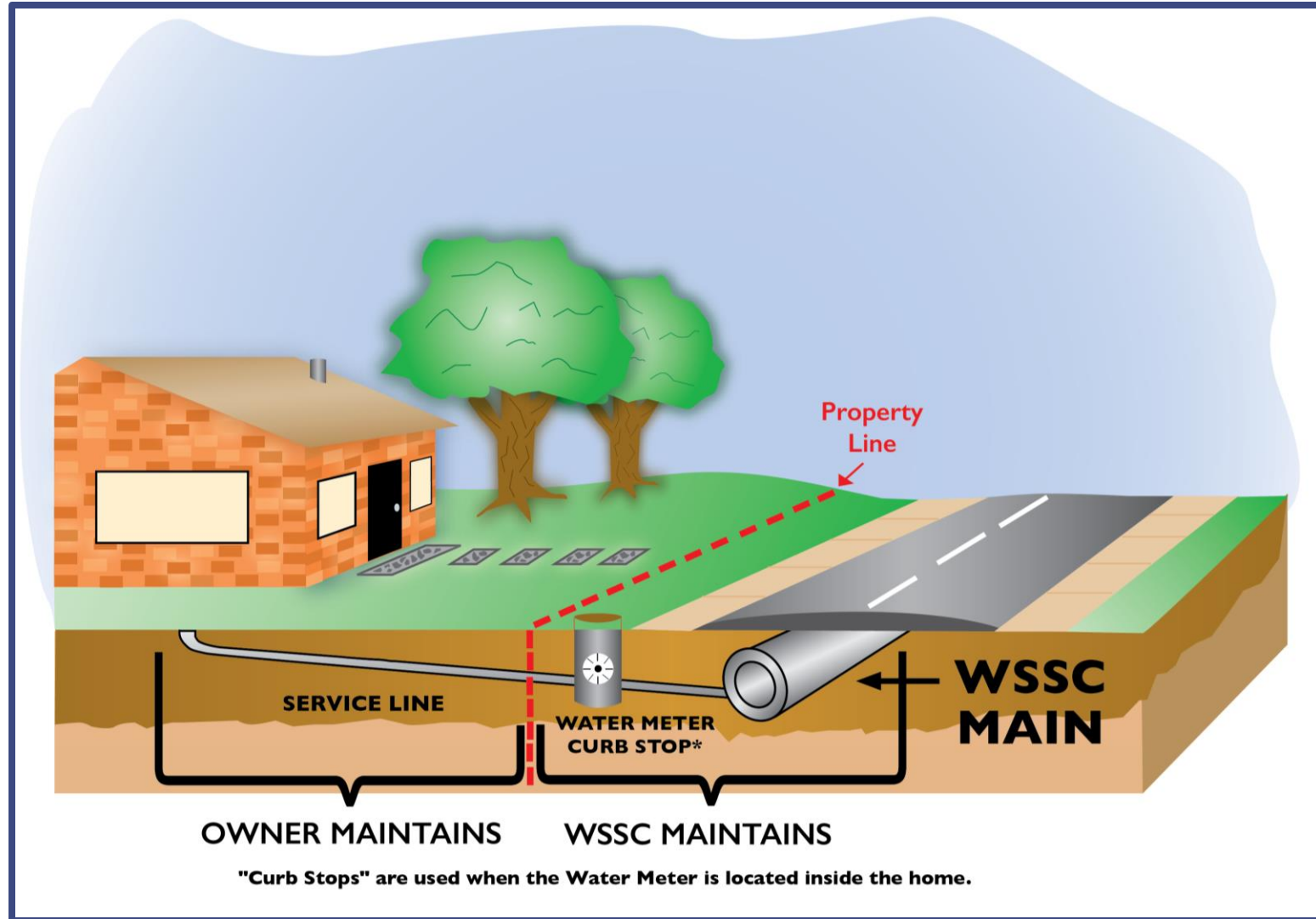


Project Overview

- WSSC Water is strategically replacing and rehabilitating our aging water and sewer pipes throughout our service area, a part of our effort to enhance service and reliability to our customers.
- The project includes replacing approximately **1.67 miles** of water mains, and house connections up to the property line.
- The current water pipes were installed in the 1940's, and 1950's and are nearing the end of their life cycle.
- The new water mains will be zinc-coated, ductile iron pipe wrapped in a protective coating, giving the pipes a life expectancy of at least 100 years.
- Replacing the existing pipes will help reduce disruptions to the community, the environment and emergency services due to water main breaks.

Project Overview

- New watermain will be installed within the roadways
- New house connections (service lines) will be installed up-to the property line
- WSSC Water coordinates with local and state agencies, as well as other utilities for all planned work to avoid potential conflict and minimize disturbances to neighborhoods.



Project Map

Directly Impacted Streets

Riggs Road
Highland Drive
Apache Street
23rd Avenue
Seminole Street
24th Avenue
Tecumseh Street



Estimated Construction Schedule

Anticipated Construction Start: April 2021

Estimated Construction Completion: February 2022

Construction schedules are estimated and weather permitting

Operational Changes in response to Covid-19

- WSSC Water has implemented protocols that align with recommendations from local, state, and federal public health authorities.
- Working to minimize impact
 - Facial masks and physical distancing
- All WSSC Water employees and contractors are required to refrain from coming to work if displaying symptoms of COVID-19.
 - We have implemented robust internal contact tracing and quarantine requirements.
- Earlier notification to customers
 - Contact via handouts



What to Expect During Construction

- Anticipated Work Hours: Monday-Friday, 9:00 a.m. – 3:30 p.m.
 - Work may occasionally extend beyond these hours to complete specific tasks.
- Construction activities may include:
 - Field reviews and inspections
 - Survey crews
 - Test pits
 - Construction crews and heavy machinery
- Reliable water and sewer service will be maintained during construction
 - Short water shutdowns of up to 8 hours may be required
 - Advanced notification (48-72 hours) of these shutdowns will be provided



What to Expect During Construction

- Open-cut construction method, which involves cutting and excavating a section of the pavement.
- This construction method does create noise and dust.



Temporary Water Service Installation

- Above-ground (bypass) pipes may be installed to maintain water service to your home.
 - Bypass pipes are not used in cold weather months
- These pipes will be placed along the roadway edge and provide the same quality of water to your home.



Traffic Impacts

- Certain construction activities may require temporary changes to traffic patterns
 - Traffic will be managed to minimize community disruptions
- Access will be maintained to homes during construction
 - Access into homes is **NOT** required
 - Access onto private property is generally **NOT** required
- Parking restrictions
 - WSSC Water will provide 48-hour advance (denoted by “No Parking” signs) notice prior to any parking restrictions
 - Any vehicles that have not been removed from the designated area will be towed to a nearby street at no cost to the owner.
- Final restoration of sidewalks, roadways and landscaping will take place within 90 days of construction completion.



Signage and Restoration

- Construction signs with contact persons will be placed throughout the project area
- Projects completed during the winter months will be permanently paved and restored to their original state or better in the following spring.



Project Summary

- The existing distribution system water mains are near the end of their useful lives.
- WSSC Water will be replacing the distribution system water mains and water house connections up to the property line.
- WSSC Water will minimize service disruptions during construction.
- WSSC Water will coordinate work activities with property owners in the project area.
- WSSC Water will restore all areas impacted by construction activities at the end of the project.
- WSSC Water's goal is to provide a reliable water system to customers.

THANK YOU! QUESTIONS?

