

Community Meeting

BEAVERDAM BASIN SANITARY SEWER SYSTEM REHABILITATION

Project No. **CICKCRLLLR6747DI9 &
CICRLLLR6747EI9**

John Papademas
WSSC Water Project Manager

February 11, 2021

AGENDA

- Introduction to Project Team
- Sewer Rehabilitation Program Overview
- Project Overview
- Project Map
- Sewer Rehab Methods
- Estimated Construction Schedule
- What to Expect During Construction
- Project Summary
- Questions & Answers

Project Team

- **John Papademas, Design Project Manager**
301-206-8933, John.Papademas@wsscwater.com
- **Calvin Johnson, Technical Contracts Supervisor (Construction)**
202-594-6800, Calvin.Johnson@wsscwater.com
- **Stephen Billingsley, Customer Advocate**
240-444-5803, Stephen.Billingsley@wsscwater.com
- **Johnson, Mirmiran & Thompson, Engineering Design Consultants**

Sewer Rehabilitation Program Overview

- Replace and repair our aging pipes as part of our comprehensive sewer rehabilitation program.
- Provide for correcting structural deficiencies in sewer mains that may result from soil settlement, root penetration, or corrosion, and often contribute to sewage overflows and backups into homes.
- The completed projects will extend the life of the sewer pipes by at least 50 years.

Project Overview

- Sewer pipes and manholes will be rehabilitated using primarily Trenchless methods.
- Pipes and manholes that are in very poor condition will require excavation to replace or repair them.
- Approximately **2.69** miles of sewer pipes will be rehabilitated or replaced;
- Approximately **9** manholes will be rehabilitated or replaced.
- Sewer house service connections (up to property lines) will be replaced and reconnected where sewer pipes are replaced.
- WSSC Water will restore areas affected by construction.

Project Map

Legend

- Manhole Repair, Replacement, and Rehabilitation
- Sewer Repair, Replacement, and Rehabilitation

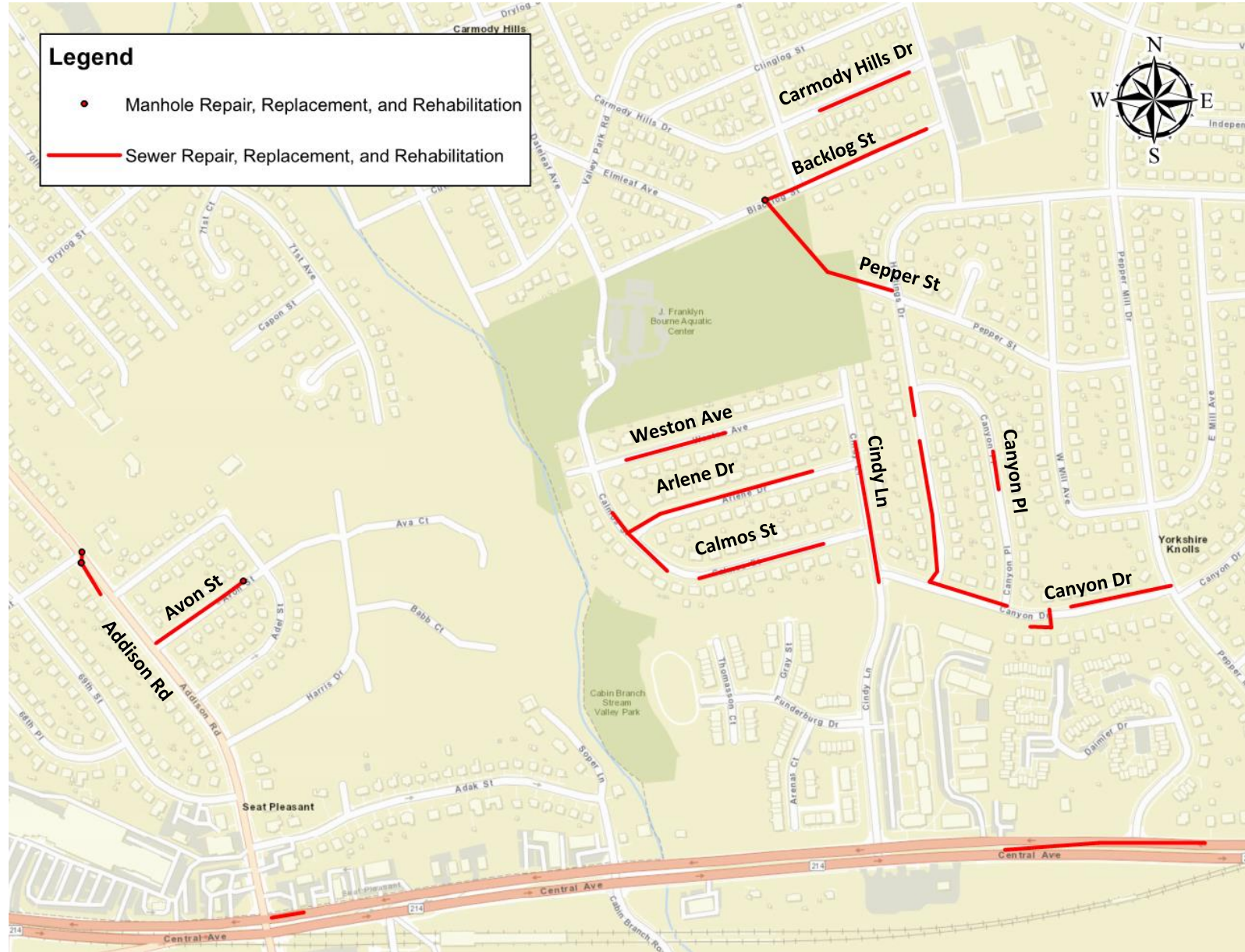
CTO Package A
Project No.
CICKRLLLR6747D19

CTO Package B
Project No.
CICRLLLR6747E19

Map for CTO Package A, Project No. CICKCRLLLR6747D19

Directly Impacted Streets

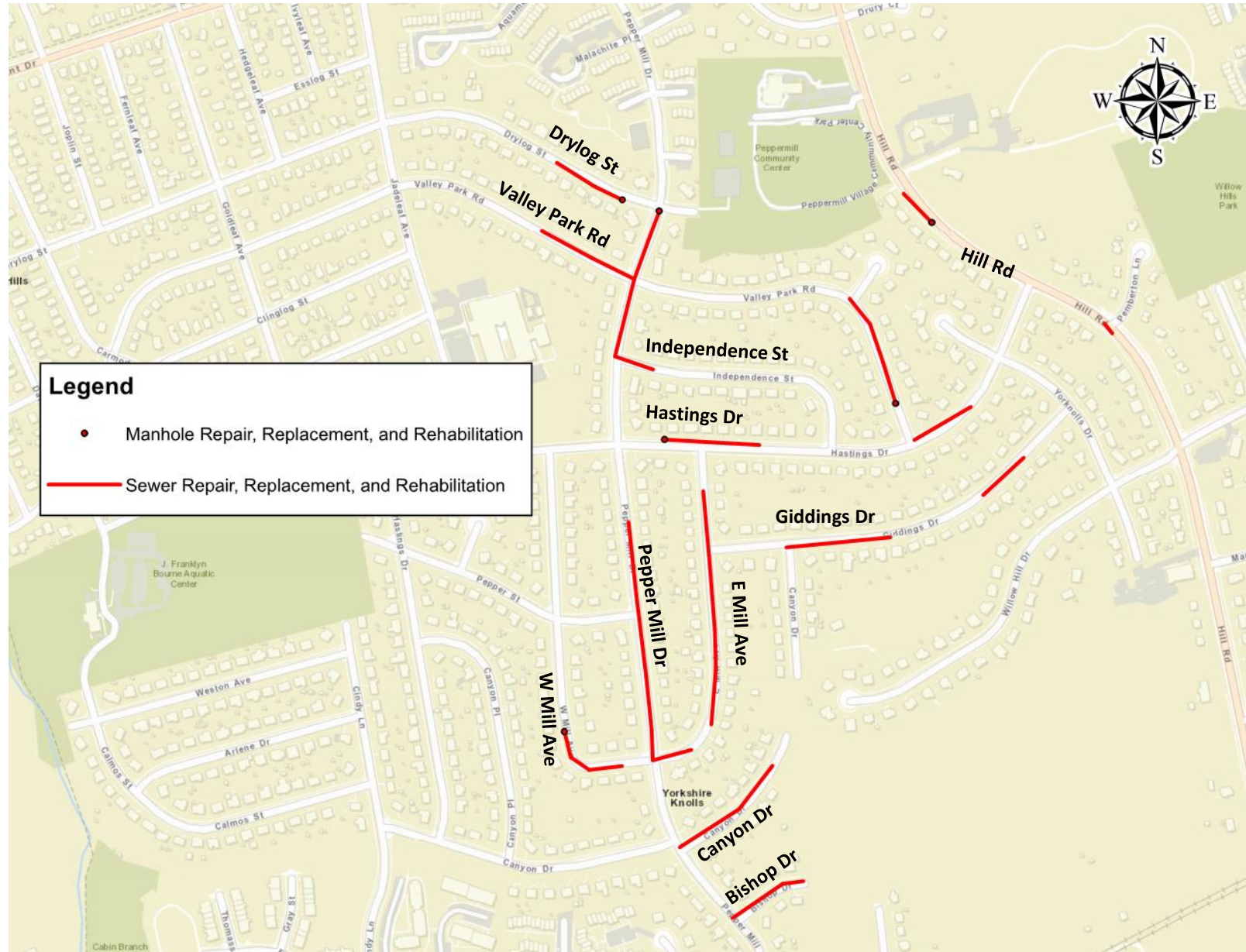
ADDISON ROAD
ARLENE DRIVE
AVON STREET
BLACKLOG STREET
CALMOS STREET
CANYON DRIVE
CANYON PLACE
CARMODY HILLS DRIVE
CENTRAL AVENUE
CINDY LANE
HASTINGS DRIVE
PEPPER MILL DRIVE
WESTON AVENUE



Map for CTO Package B, Project No. CICRLLLR6747E19

Directly Impacted Streets

BISHOP DRIVE
CANYON DRIVE
DRYLOG STREET
GIDDINGS DRIVE
HASTINGS DRIVE
HILL ROAD
INDEPENDENCE STREET
MILL AVENUE
PEPPER MILL DRIVE
PEPPER STREET
VALLEY PARK ROAD



Sewer Repairs Types: Trenchless Technology



Sewer Repairs Types: Open Trench



Sewer Repairs Types: Manhole Rehabilitation



Estimated Construction Schedule

Anticipated Construction Start:

March 2021

Estimated Construction Completion:

February 2022

Construction schedules are estimated and weather permitting

Operational Changes in response to Covid-19

- WSSC Water has implemented protocols that align with recommendations from local, state, and federal public health authorities.
- Working to minimize impact
 - Facial masks and physical distancing
- All WSSC Water employees and contractors are required to refrain from coming to work if displaying symptoms of COVID-19.
 - We have implemented robust internal contact tracing and quarantine requirements.
- Earlier notification to customers
 - Contact via handouts



What to Expect During Construction

- Anticipated Work schedule: 9:00 a.m. to 3:00 p.m., Monday-Friday
 - Conditions at some locations may require different work hours
 - Residents will be notified at least 2 days prior to all construction activities
- Construction activities may include:
 - Marking locations of utilities
 - Field Inspections
 - Rehabilitation of sewer mains, manholes and laterals (primarily in the roadway)
 - Pavement restoration where digging is necessary
- Reliable sewer service will be maintained during construction



What to Expect During Construction

- Street parking will be limited on streets with active construction.
 - 48-hours advanced notification will be provided.
 - NO PARKING signs will be posted.
 - All roads will remain accessible at all times during construction. However, certain activities may require temporary closures and delays.
- Access from the public roadway to businesses and homes will be maintained at all times.
- Entry into homes is NOT required.
- Tree removal, only when necessary, pruning and/or stump removal.
 - New trees will be planted where trees needed to be removed
 - Trees on private property will not be removed

Project Summary

- WSSC Water will be rehabilitating pipes, manholes, and some laterals.
 - Lateral work will not extend past the property line.
- WSSC Water is committed to minimizing the impact of construction.
- WSSC Water will restore all areas impacted by construction activities at the end of the project.
- We understand the inconvenience these types of projects can cause and appreciate your patience as we work to provide safe, seamless and satisfying water and sewer services, for our customers every day.
- Sign-up at www.wsscwater.com/CNS, to receive emails and/or text alerts so you can keep updated on work in your neighborhood.

QUESTIONS?

