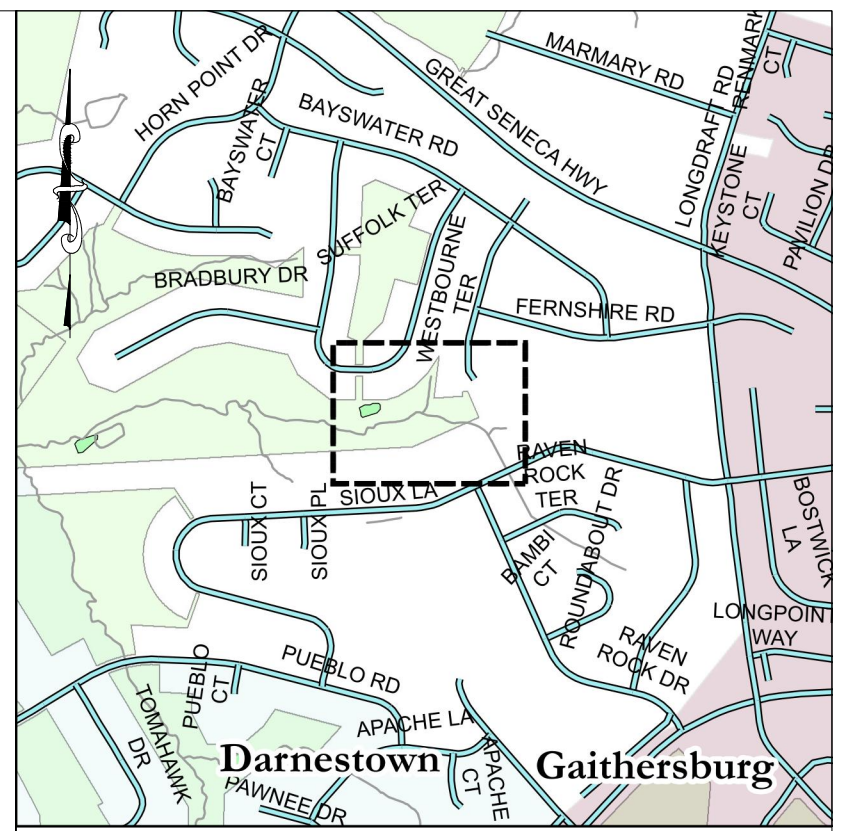


LEGEND

- PROPERTY LINE
- SEWER TO BE LINED USING CIPP
- SANITARY SEWER PIPE
- WATER LINE
- SD STORM WATER PIPE
- GAS LINE
- 100 YEAR FLOODPLAIN
- SILT FENCE
- SSF SUPER SILT FENCE
- STREAM (M-NCPPC 2000)
- SURVEYED STREAMS
- WSSC R/W
- WETLAND
- WETLAND BUFFER
- 10-FOOT CONTOUR
- 2-FT CONTOUR
- FOREST LINE
- BYPASS PIPE LINE
- FENCE
- STABILIZED CONSTRUCTION ENTRANCE (SCE)
- TEMP. ACCESS ROAD (SEE DETAIL SHEET FOR MULCH MAT TYPE)
- TEMP. FOOT PATH
- DIRECTION OF FLOW
- SANITARY SEWER MANHOLE
- MANHOLE TO BE REHABILITATED
- BYPASS TO MANHOLE
- BYPASS FROM MANHOLE
- CRITICAL ROOT ZONE
- TREE TO BE REMOVED
- M-NCPPC PARK PROPERTY
- WOOD BRIDGE PATH (USE ONLY FOR FOOT TRAFFIC)



VICINITY MAP
SCALE 1" = 1000'
MONT. Co. PAGE 5046 GRID K10
FOR LOCATION OF UTILITIES CALL 8-1-1 OR 1-800-257-7777 OR LOG ON TO www.call811.com or www.missutility.net 48 HOURS IN ADVANCE OF ANY WORK IN THIS VICINITY

DATE	REVISIONS
05/05/16	MODIFIED PER CONTRACTORS PLAN

PERMIT REQUIREMENTS

TREE	REQ.
WETLANDS / WATERWAYS	REQ.
M.N.C.P.&P.C.	REQ.
STATE HWY. ADM.	NOT REQ.
STATE BD. HEALTH	REQ.
MONTGOMERY CO.	REQ.
SED. CONTROL	REQ.
P.G.CO.D.P.W.&T.	NOT REQ.
M.D. D.O.E. - WMA	REQ.

*TO BE ACQUIRED BY APPLICANT

TOWN NOTIFICATION

AS BUILT DATA

CONTRACT MANAGER	
CONTRACTOR	
INSPECTOR	
L & G	
DATE STARTED	
DATE COMPLETED	
TYPE PIPE	W. S.
TYPE MANHOLES	
DATE FINALED	
FINALED BY	

DRAWING INDEX

Drawing No.	Description
1 thru 23	Plans/Profiles/Details
22 & 23	Sediment Control Details

INFRASTRUCTURE SYSTEMS GROUP

DATE _____ GROUP LEADER _____
SEWER/REHABILITATION UNIT

DATE _____ UNIT COORDINATOR _____

DRAWN	ADEQUATE SURVEY	
	ON PROP. R/W REQ'D	
CHECK	OFF PROP. R/W REQ'D	
	OTHER UTILITIES	

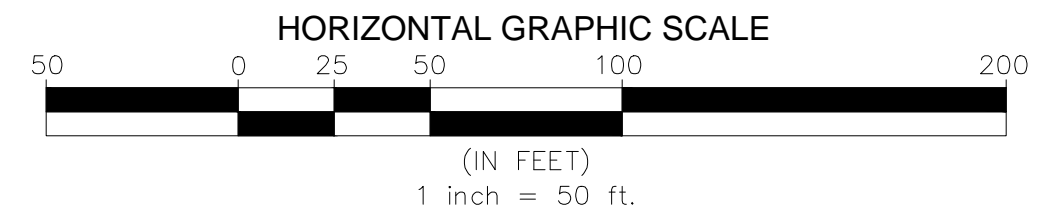
JOB NUMBER	CI/CK5297F11
	NO 5
200'S 222NW12	OF 23

Sanitary Manhole Rehabilitation Legend

Code	Description
A	Reconstruct(Brick) /Seal (Precast) Adjustment
B	Armoring Manhole
C	Replace Manhole
D	Joint Seal (Pre-Cast) - Wall
E	Reconstruct Drop Connection
F	Replace Ex. MH Frame & Cover with Standard Frame & Cover
G	Replace Cone/ Recon Cone (Seal Brick Cone)
H	Replace Ex. MH Frame & Cover with Locking Frame & Cover
I	Replace MH Cover Only
J	Reset MH Frame & Cover
K	Repair/Replace Parging
L	Patch Liftholes / Holes
M	Replace Adjusting Rings
N	Replace MH Bolts
O	Grout & Seal MH Wall
P	Apply Interior Coating - Line
Q	Use Bag Liner
R	Repair Bench and/or Invert
S	Repair Pipe Seal
T	Clean & Inspect Manhole
U	Reconstruct Wall
V	Raise Manhole
W	Relocate Manhole
X	Plug / Cap Inactive Service / Line

PROFESSIONAL CERTIFICATION

I HEREBY CERTIFY THAT THESE DOCUMENTS WERE PREPARED OR APPROVED BY ME, AND THAT I AM A DULY LICENSED PROFESSIONAL ENGINEER UNDER THE LAWS OF THE STATE OF MARYLAND.
LICENSE NO.: 28817
EXP. DATE: 08/01/15



SANITARY MANHOLE REHABILITATION SCHEDULE 5B-2

NO.	MH ID	A	B	C	D	E	F	G	H	I	J	K	L	M	N	O	P	Q	R	S	T	U	V	W	X	PRIORITY #	MH DIAMETER (FT)	CEMENTITIOUS RECONSTRUCTION THICKNESS (IN)	EPOXY LINER THICKNESS (MILS)	
1	15003122M																									X	0	4	N/A	N/A

SANITARY SEWER REHABILITATION SCHEDULE 5B-2

NO.	SEWER ID	U/S MH	D/S MH	LINER THICKNESS (MM)	LINEAR FT	DIAMETER (IN)
1	15003073S	15003073M	15003072U	6	221	8
2	15003074S	15003074U	15003073M	6	347	8
3	15003101S	15003101M	15003072U	6	197	8

NOTE: ESTIMATED LINER THICKNESS IS BASED ON FELT LINER AND AMBIENT TEMPERATURES, STEAM OR HOT WATER CURED CIPP. CONTRACTOR PERMITTED TO USE REINFORCED FIBERGLASS AND STEAM OR ULTRAVIOLET CURED CIPP IN ACCORDANCE WITH SPECIFICATIONS.
NOTE: CONTRACTOR SHALL SUBMIT LINER THICKNESS CALCULATIONS IN ACCORDANCE WITH SPECIFICATIONS.
NOTE: LINEAR FEET IS FROM WSSC GIS DATA.

- PROTECTIVE MATTING MUST BE USED WHERE TEMPORARY ACCESS PATHS CROSS WITHIN OR OVER TREE ROOT PROTECTION ZONES, WETLANDS, WETLAND BUFFERS, 100-YEAR FLOODPLAINS, OR EXISTING PAVEMENT.
- SEE SHEET 23 FOR ACCESS ROAD DETAILS.
- SEE SHEET 2, 22 & 23 FOR EROSION & SEDIMENT CONTROL NOTES & DETAILS.
- SEE SHEET 23 FOR TEMPORARY STREAM CROSSING DETAIL.
- M-NCPPC GIS STREAM DATA MODIFIED TO JOIN URS SURVEYED STREAM DATA (ORDINARY HIGH WATER MARK).
- SSF REQUIRED IN WETLANDS AND WETLAND BUFFERS.
- TEMP. FOOT PATHS HAVE NO MATTING REQUIREMENTS.
- COORDINATE NECESSARY TREE REMOVAL WITH MNCPPC.

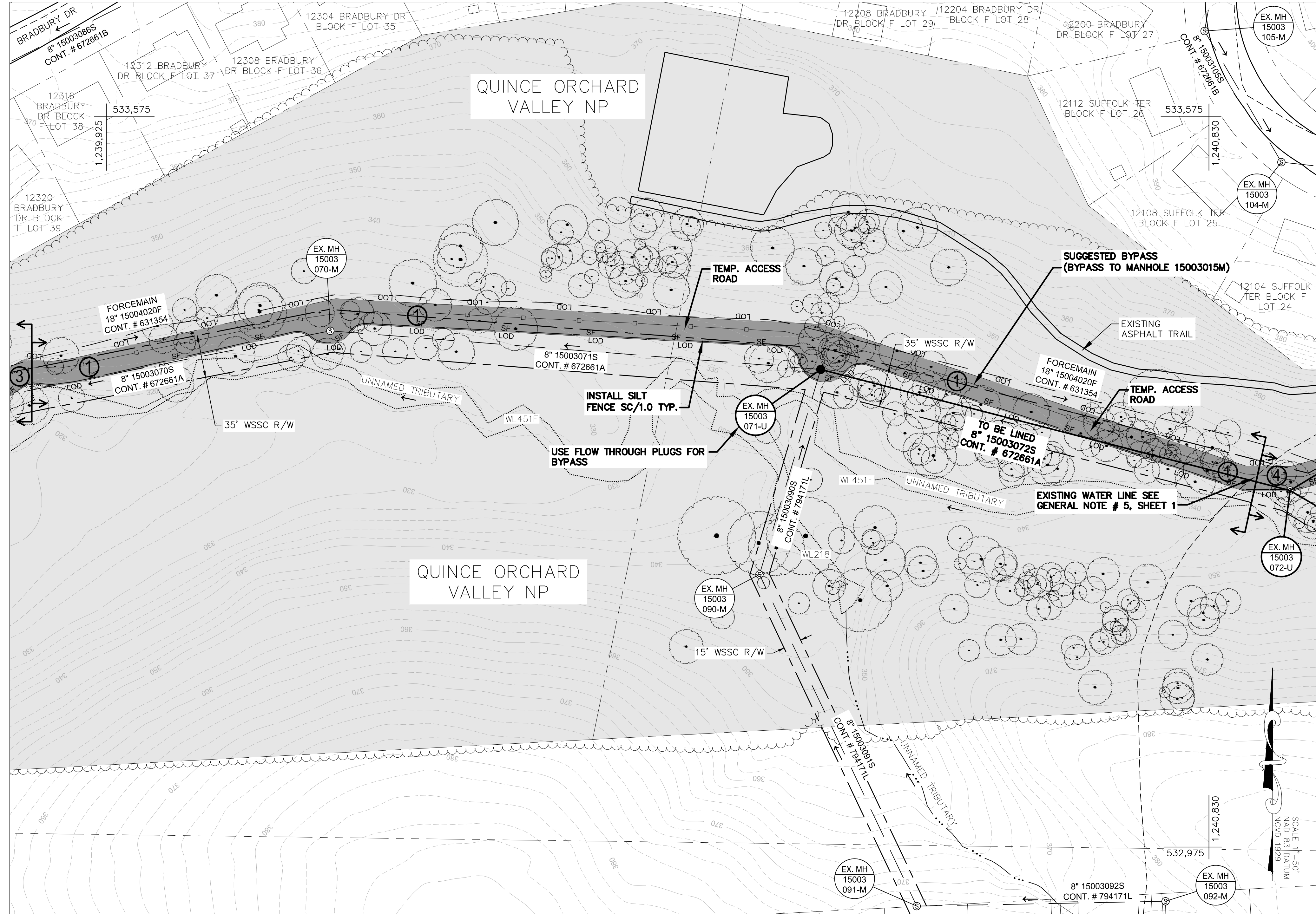
WASHINGTON SUBURBAN SANITARY COMMISSION

THESE DOCUMENTS CONTAIN PRIVILEGED AND CONFIDENTIAL INFORMATION WHICH SHALL NOT BE REDISTRIBUTED WITHOUT PRIOR WSSC APPROVAL

ENGINEER:
NAME: URS CORPORATION
ADDRESS: 3600 O'DONNELL STREET SUITE 300 BALTIMORE, MD 21224 (410)-468-0875
PHONE: (410)-468-0875
CONTACT: NATHAN ATKINSON

URS

DIQ - ESA - PM5297A11 - TASK ORDER NO. 5
SENECA CREEK BASIN
SEWER FACILITIES REHABILITATION
SECTION B-2

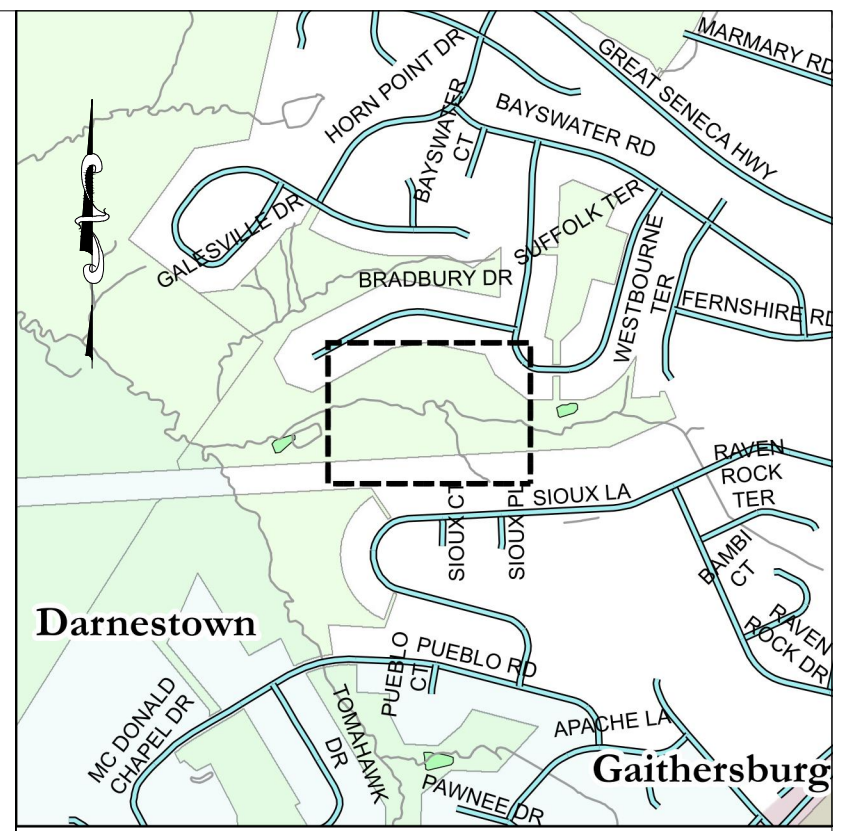


LEGEND

- PROPERTY LINE
- SEWER TO BE LINED USING CIPP
- SANITARY SEWER PIPE
- WATER LINE
- SD --- STORM WATER PIPE
- GAS --- GAS LINE
- 100 YEAR FLOODPLAIN
- SF --- SILT FENCE
- SSF --- SUPER SILT FENCE
- STREAM (M-NCPPC 2000)
- SURVEYED STREAMS
- WSSC R/W
- W --- WETLAND
- WB --- WETLAND BUFFER
- 10-FOOT CONTOUR
- 2-FT CONTOUR
- FOREST LINE
- BYPASS PIPE LINE
- FENCE
- STABILIZED CONSTRUCTION ENTRANCE (SCE)
- LOD
- LOD
- TEMP. ACCESS ROAD (SEE DETAIL SHEET FOR MULCH MAT TYPE)
- TEMP. FOOT PATH
- DIRECTION OF FLOW
- SANITARY SEWER MANHOLE
- MANHOLE TO BE REHABILITATED
- ▲ BYPASS TO MANHOLE
- ▲ BYPASS FROM MANHOLE
- CRITICAL ROOT ZONE
- TREE TO BE REMOVED
- M-NCPPC PARK PROPERTY

Sanitary Manhole Rehabilitation Legend

Code	Description
A	Reconstruct(Brick) /Seal (Precast) Adjustment
B	Armoring Manhole
C	Replace Manhole
D	Joint Seal (Pre-Cast) - Wall
E	Reconstruct Drop Connection
F	Replace Ex. MH Frame & Cover with Standard Frame & Cover
G	Replace Cone/ Recon Cone (Seal Brick Cone)
H	Replace Ex. MH Frame & Cover with Locking Frame & Cover
I	Replace MH Cover Only
J	Reset MH Frame & Cover
K	Repair/Replace Parging
L	Patch Liftoles / Holes
M	Replace Adjusting Rings
N	Replace MH Bolts
O	Grout & Seal MH Wall
P	Apply Interior Coating - Line
Q	Use Bag Liner
R	Repair Bench and/or Invert
S	Repair Pipe Seal
T	Clean & Inspect Manhole
U	Reconstruct Wall
V	Raise Manhole
W	Relocate Manhole
X	Plug / Cap Inactive Service / Line



VICINITY MAP
SCALE 1" = 1000'
MONT. Co. PAGE 5046 GRID K10

FOR LOCATION OF UTILITIES CALL 8-1-1 OR 1-800-257-7777 OR LOG ON TO www.call811.com or www.missutility.net 48 HOURS IN ADVANCE OF ANY WORK IN THIS VICINITY

DATE	REVISIONS
05/05/16	MODIFIED PER CONTRACTORS PLAN

PERMIT REQUIREMENTS

Item	Requirement
TREE	REQ.
WETLANDS / WATERWAYS	REQ.
M.N.C.P.&P.C.	REQ.
STATE HGWY. ADM.	NOT REQ.
STATE BD. HEALTH	REQ.
MONTGOMERY CO.	REQ.
SED. CONTROL	REQ.
P.G.CO.D.P.W.&T.	NOT REQ.
M.D. D.O.E. - WMA	REQ.

*TO BE ACQUIRED BY APPLICANT

TOWN NOTIFICATION

AS BUILT DATA

Contract Manager	Description
CONTRACTOR	INSPECTOR
L & G	DATE STARTED
DATE COMPLETED	TYPE PIPE W.
TYPE MANHOLES	DATE FINALED
FINALED BY	

DRAWING INDEX

Drawing No.	Description
1 thru 23	Plans/Profiles/Details
22 & 23	Sediment Control Details

INFRASTRUCTURE SYSTEMS GROUP

DATE _____ GROUP LEADER _____

SEWER/REHABILITATION UNIT

DATE _____ UNIT COORDINATOR _____

DRAWN	ADEQUATE SURVEY
	ON PROP. R/W REQ'D

CHECK	OFF PROP. R/W REQ'D
	OTHER UTILITIES

JOB NUMBER C/CK5297F11

NO	6
200'S	222NW12
OF	23

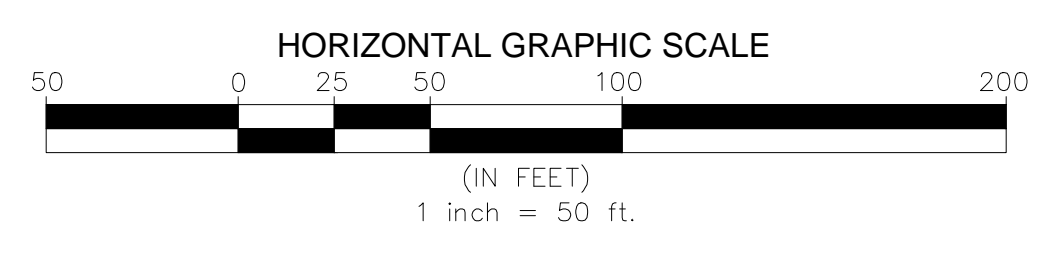
SANITARY MANHOLE REHABILITATION SCHEDULE 5B-3

NO.	MH ID	A	B	C	D	E	F	G	H	I	J	K	L	M	N	O	P	Q	R	S	T	U	V	W	X	PRIORITY #	MH DIAMETER (FT)	CEMENTITIOUS RECONSTRUCTION THICKNESS (IN)	EPOXY LINER THICKNESS (MILS)
1	15003071U																									0	4	N/A	N/A

SANITARY SEWER REHABILITATION SCHEDULE 3B-3

NO.	SEWER ID	U/S MH	D/S MH	LINER THICKNESS (MM)	LINEAR FT	DIAMETER (IN)
1	15003072S	15003072U	15003071U	6	400	8

NOTE: ESTIMATED LINER THICKNESS IS BASED ON FELT LINER AND AMBIENT TEMPERATURES, STEAM OR HOT WATER CURED CIPP. CONTRACTOR PERMITTED TO USE REINFORCED FIBERGLASS AND STEAM OR ULTRAVIOLET CURED CIPP IN ACCORDANCE WITH SPECIFICATIONS.
NOTE: CONTRACTOR SHALL SUBMIT LINER THICKNESS CALCULATIONS IN ACCORDANCE WITH SPECIFICATIONS.
NOTE: LINEAR FEET IS FROM WSSC GIS DATA.



- PROTECTIVE MATTING MUST BE USED WHERE TEMPORARY ACCESS PATHS CROSS WITHIN OR OVER TREE ROOT PROTECTION ZONES, WETLANDS, WETLAND BUFFERS, 100-YEAR FLOODPLAINS, OR EXISTING PAVEMENT.
- SEE SHEET 23 FOR ACCESS ROAD DETAILS.
- SEE SHEET 23 FOR EROSION & SEDIMENT CONTROL NOTES & DETAILS.
- SEE SHEET 23 FOR TEMPORARY STREAM CROSSING DETAIL.
- M-NCPPC GIS STREAM DATA MODIFIED TO JOIN URS SURVEYED STREAM DATA (ORDINARY HIGH WATER MARK).
- SSF REQUIRED IN WETLANDS AND WETLAND BUFFERS.
- TEMP. FOOT PATHS HAVE NO MATTING REQUIREMENTS.
- COORDINATE NECESSARY TREE REMOVAL WITH MNCPPC.

PROFESSIONAL CERTIFICATION

I HEREBY CERTIFY THAT THESE DOCUMENTS WERE PREPARED OR APPROVED BY ME, AND THAT I AM A DULY LICENSED PROFESSIONAL ENGINEER UNDER THE LAWS OF THE STATE OF MARYLAND.
LICENSE NO.: 28817
EXP. DATE: 08/01/15

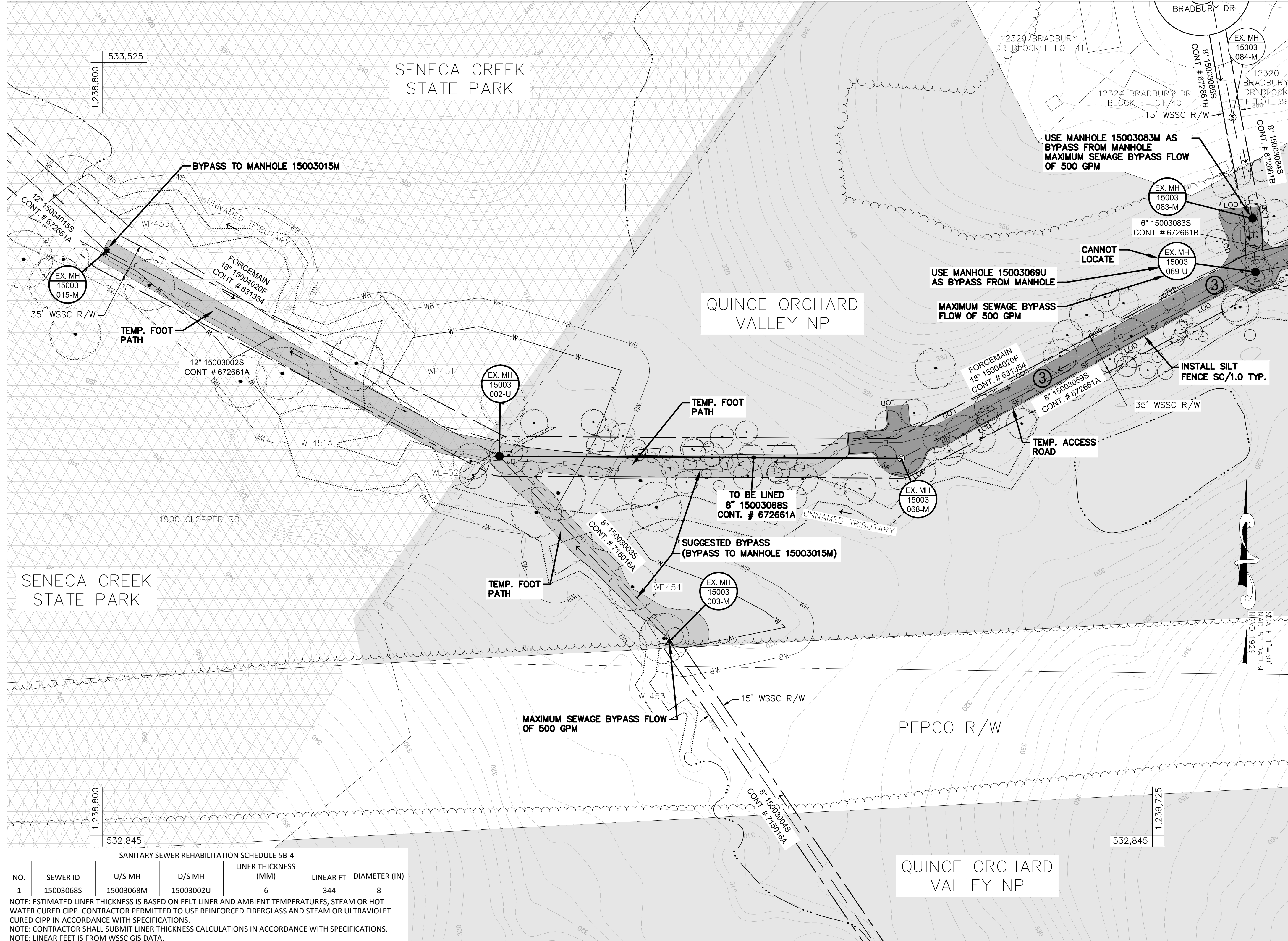
WASHINGTON SUBURBAN SANITARY COMMISSION

THESE DOCUMENTS CONTAIN PRIVILEGED AND CONFIDENTIAL INFORMATION WHICH SHALL NOT BE REDISTRIBUTED WITHOUT PRIOR WSSC APPROVAL

ENGINEER:
NAME: URS CORPORATION
ADDRESS: 3600 O'DONNELL STREET SUITE 300 BALTIMORE, MD 21224 (410)-468-0875
PHONE: NATHAN ATKINSON
CONTACT:

IDIQ - ESA - PM5297A11 - TASK ORDER NO. 5
SENECA CREEK BASIN
SEWER FACILITIES REHABILITATION
SECTION B-3

PATH: C:\Users\michael_oliver\Desktop\C:\XPALGN-5\C-XPALGN-5 (LOD) Revised 5B-2, 5B-3 & 5B-4-2016-4-22.dwg



SANITARY SEWER REHABILITATION SCHEDULE 5B-4

NO.	SEWER ID	U/S MH	D/S MH	LINER THICKNESS (MM)	LINEAR FT	DIAMETER (IN)
1	15003068S	15003068M	15003002U	6	344	8

NOTE: ESTIMATED LINER THICKNESS IS BASED ON FELT LINER AND AMBIENT TEMPERATURES, STEAM OR HOT WATER CURED CIPP. CONTRACTOR PERMITTED TO USE REINFORCED FIBERGLASS AND STEAM OR ULTRAVIOLET CURED CIPP IN ACCORDANCE WITH SPECIFICATIONS.
NOTE: CONTRACTOR SHALL SUBMIT LINER THICKNESS CALCULATIONS IN ACCORDANCE WITH SPECIFICATIONS.
NOTE: LINEAR FEET IS FROM WSSC GIS DATA.

SANITARY MANHOLE REHABILITATION SCHEDULE 5B-4

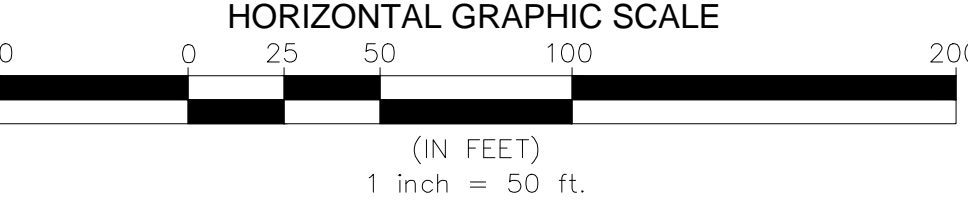
NO.	MH ID	A	B	C	D	E	F	G	H	I	J	K	L	M	N	O	P	Q	R	S	T	U	V	W	X	PRIORITY #	MH DIAMETER (FT)	CEMENTITIOUS RECONSTRUCTION THICKNESS (IN)	EPOXY LINER THICKNESS (MILS)
1	15003002U				X	X																				1	4	N/A	N/A
2	15003069U															X										2	4	N/A	N/A
3	15003083M																X								2	4	N/A	N/A	

LEGEND

- PROPERTY LINE
- SEWER TO BE LINED USING CIPP
- SANITARY SEWER PIPE
- WATER LINE
- SD STORM WATER PIPE
- GAS LINE
- 100 YEAR FLOODPLAIN
- SF SILT FENCE
- SSF SUPER SILT FENCE
- STREAM (M-NCPPC 2000)
- SURVEYED STREAMS
- WSSC R/W
- WETLAND
- WETLAND BUFFER
- 10-FOOT CONTOUR
- 2-FT CONTOUR
- FOREST LINE
- BYPASS PIPE LINE
- FENCE
- STABILIZED CONSTRUCTION ENTRANCE (SCE)
- TEMP. ACCESS ROAD (SEE DETAIL SHEET FOR MULCH MAT TYPE)
- TEMP. FOOT PATH
- DIRECTION OF FLOW
- SANITARY SEWER MANHOLE
- MANHOLE TO BE REHABILITATED
- BYPASS TO MANHOLE
- BYPASS FROM MANHOLE
- CRITICAL ROOT ZONE
- TREE TO BE REMOVED
- M-NCPPC PARK PROPERTY
- HISTORICAL PRESERVATION

Sanitary Manhole Rehabilitation Legend

Code	Description
A	Reconstruct(Brick) /Seal (Precast) Adjustment
B	Armoring Manhole
C	Replace Manhole
D	Joint Seal (Pre-Cast) - Wall
E	Reconstruct Drop Connection
F	Replace Ex. MH Frame & Cover with Standard Frame & Cover
G	Replace Cone/ Recon Cone (Seal Brick Cone)
H	Replace Ex. MH Frame & Cover with Locking Frame & Cover
I	Replace MH Cover Only
J	Reset MH Frame & Cover
K	Repair/Replace Parging
L	Patch Liftoles / Holes
M	Replace Adjusting Rings
N	Replace MH Bolts
O	Grout & Seal MH Wall
P	Apply Interior Coating - Line
Q	Use Bag Liner
R	Repair Bench and/or Invert
S	Repair Pipe Seal
T	Clean & Inspect Manhole
U	Reconstruct Wall
V	Raise Manhole
W	Relocate Manhole
X	Plug / Cap Inactive Service / Line

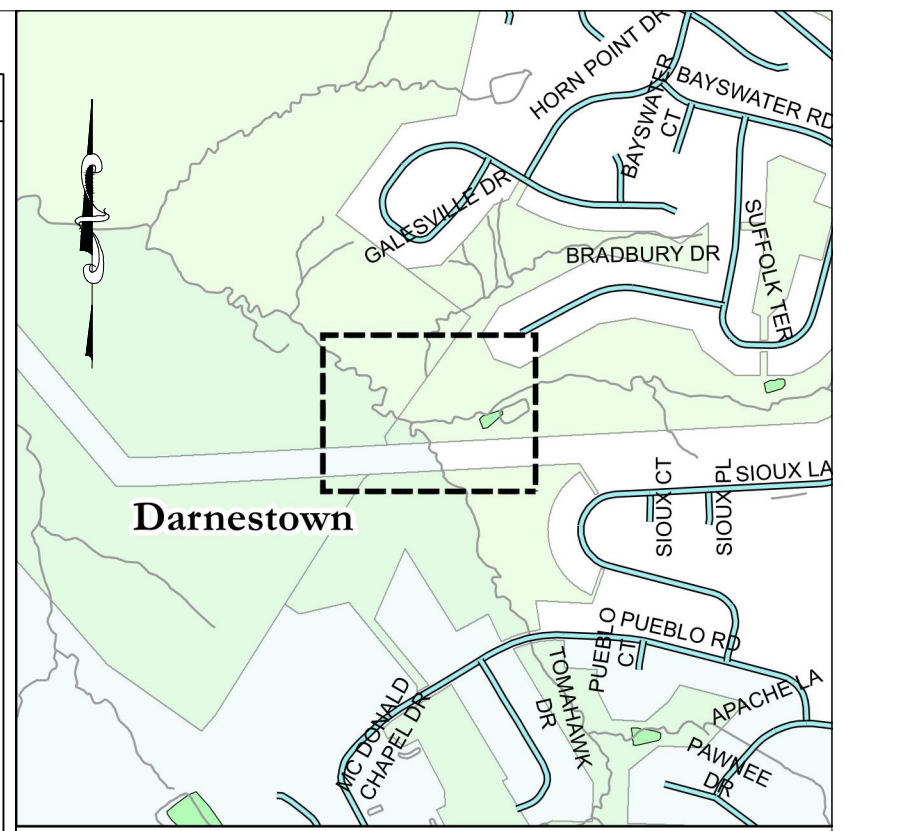


PROFESSIONAL CERTIFICATION

I HEREBY CERTIFY THAT THESE DOCUMENTS WERE PREPARED OR APPROVED BY ME, AND THAT I AM A DULY LICENSED PROFESSIONAL ENGINEER UNDER THE LAWS OF THE STATE OF MARYLAND.

LICENSE NO.: 28817
EXP. DATE: 08/01/15

- PROTECTIVE MATTING MUST BE USED WHERE TEMPORARY ACCESS PATHS CROSS WITHIN OR OVER TREE ROOT PROTECTION ZONES, WETLANDS, WETLAND BUFFERS, 100-YEAR FLOODPLAINS, OR EXISTING PAVEMENT.
- SEE SHEET 23 FOR ACCESS ROAD DETAILS.
- SEE SHEET 2, 22 & 23 FOR EROSION & SEDIMENT CONTROL NOTES & DETAILS.
- SEE SHEET 23 FOR TEMPORARY STREAM CROSSING DETAIL.
- M-NCPPC GIS STREAM DATA MODIFIED TO JOIN URS SURVEYED STREAM DATA (ORDINARY HIGH WATER MARK).
- SSF REQUIRED IN WETLANDS AND WETLAND BUFFERS.
- TEMP. FOOT PATHS HAVE NO MATTING REQUIREMENTS.
- COORDINATE NECESSARY TREE REMOVAL WITH MNCPPC.



DATE 05/05/16
REVISIONS MODIFIED PER CONTRACTORS PLAN

PERMIT REQUIREMENTS

TREE	REQ.
WETLANDS / WATERWAYS	REQ.
M.N.C.P.&P.C.	REQ.
STATE HWY. ADM.	NOT REQ.
STATE BD. HEALTH	REQ.
MONTGOMERY CO.	REQ.
SED. CONTROL	REQ.
P.G.CO.D.P.W.&T.	NOT REQ.
M.D. D.O.E. - WMA	REQ.

TOWN NOTIFICATION

AS BUILT DATA

CONTRACT MANAGER
CONTRACTOR
INSPECTOR
L & G
DATE STARTED
DATE COMPLETED
TYPE PIPE W. S.
TYPE MANHOLES
DATE FINALED
FINALED BY

DRAWING INDEX

Drawing No.	Description
1 thru 23	Plans/Profiles/Details
22 & 23	Sediment Control Details

INFRASTRUCTURE SYSTEMS GROUP

DATE _____ GROUP LEADER _____

DATE _____ UNIT COORDINATOR _____

DRAWN	ADEQUATE SURVEY		
CHECK	ON PROP. R/W REQ'D		
CHECK	OFF PROP. R/W REQ'D		
	OTHER UTILITIES		

WASHINGTON SUBURBAN SANITARY COMMISSION



THESE DOCUMENTS CONTAIN PRIVILEGED AND CONFIDENTIAL INFORMATION WHICH SHALL NOT BE REDISTRIBUTED WITHOUT PRIOR WSSC APPROVAL

ENGINEER:
NAME: URS CORPORATION
ADDRESS: 3600 O'DONNELL STREET SUITE 300 BALTIMORE, MD 21224 (410)-468-0875
PHONE: NATHAN ATKINSON
CONTACT:



DIQ - ESA - PM5297A11 - TASK ORDER NO. 5
SENECA CREEK BASIN
SEWER FACILITIES REHABILITATION
SECTION B-4

JOB NUMBER CI/CK5297F11

NO	7
OF	23

1" IF NOT ONE INCH ON THIS SHEET, ADJUST SCALES ACCORDINGLY. VERIFY SCALE - BAR IS ONE INCH ON ORIGINAL DRAWING