



SANITARY SEWER SYSTEM REHABILITATION FOR PARKWAY BRANCH BASIN

Project Nos. **CICRLLLR6862B20 &
CICRLLLR6862C20**

November 19, 2020



AGENDA

- Introduction to Project Team
- Sewer Rehabilitation Program Overview
- Project Overview
- Project Map
- Sewer Rehab Methods
- Estimated Construction Schedule
- What to Expect During Construction
- Project Summary
- Questions & Answers

Project Team

- **Omar Muhammad, Design Project Manager**
301-206-8560, omar.muhammad@wsscwater.com
- **Earnest Pigatt, Technical Contracts Supervisor (Construction)**
301-206-4350, earnest.pigatt@wsscwater.com
- **David Wilkins, Customer Advocate**
301-206-4371, david.wilkins@wsscwater.com
- **Johnson, Mirmiran & Thompson, Engineering Design Consultants**

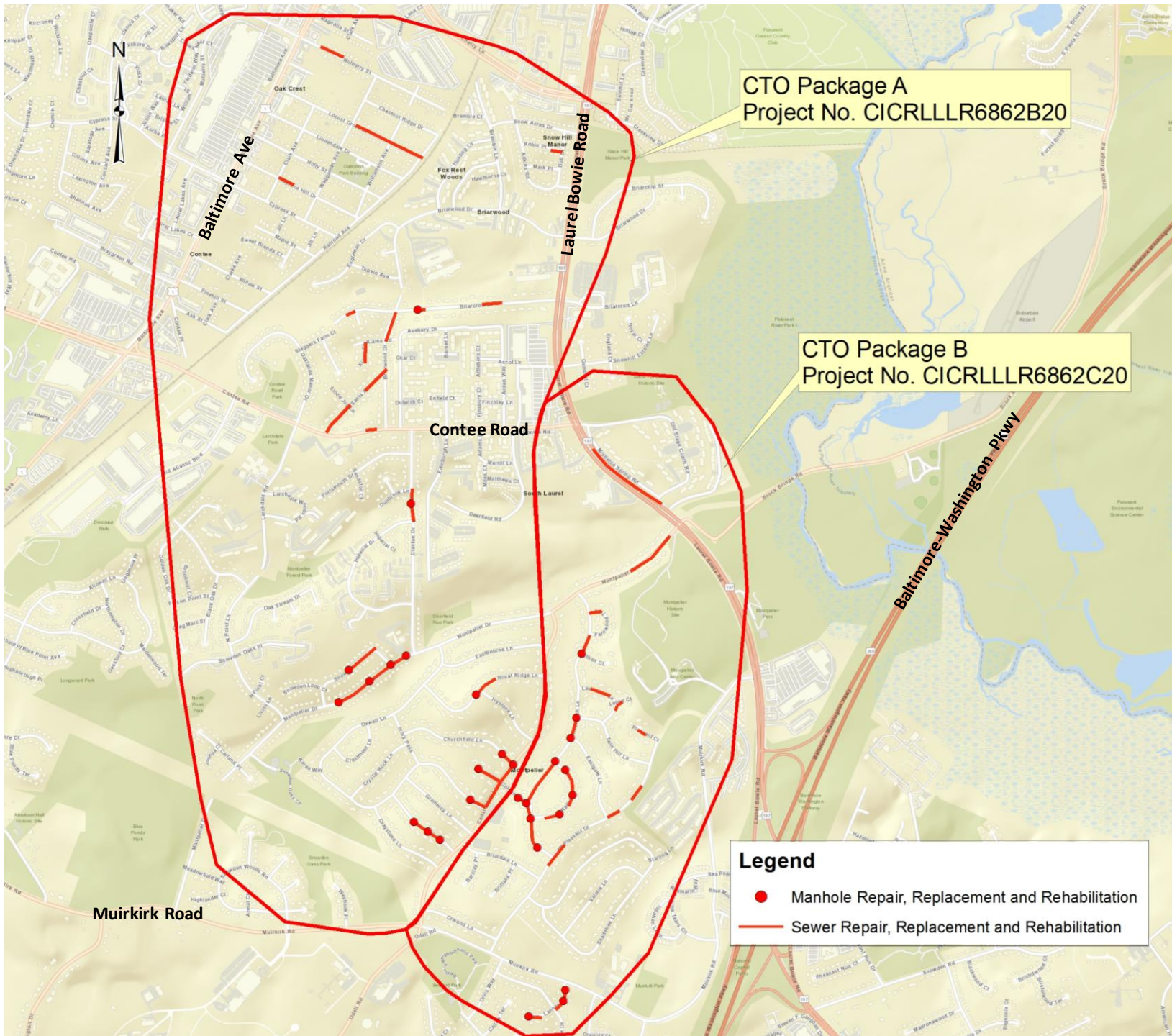
Program Overview

- Replace and repair our aging pipes as part of our comprehensive sewer rehabilitation program.
- Provide for correcting structural deficiencies in sewer mains that may result from soil settlement, root penetration, or corrosion, and often contribute to sewage overflows and backups into homes.
- The completed projects will extend the life of the sewer pipes by at least 50 years.

Project Overview

- Sewer pipes and manholes will be rehabilitated using primarily Trenchless methods.
- Pipes and manholes that are in very poor condition will require excavation to replace or repair them.
- Approximately 2.7 miles of sewer pipes will be rehabilitated or replaced.
- Approximately 29 manholes will be rehabilitated or replaced.
- Sewer house service connections (up to property lines) will be replaced and reconnected where sewer pipes are replaced.
- WSSC Water will restore areas affected by construction.

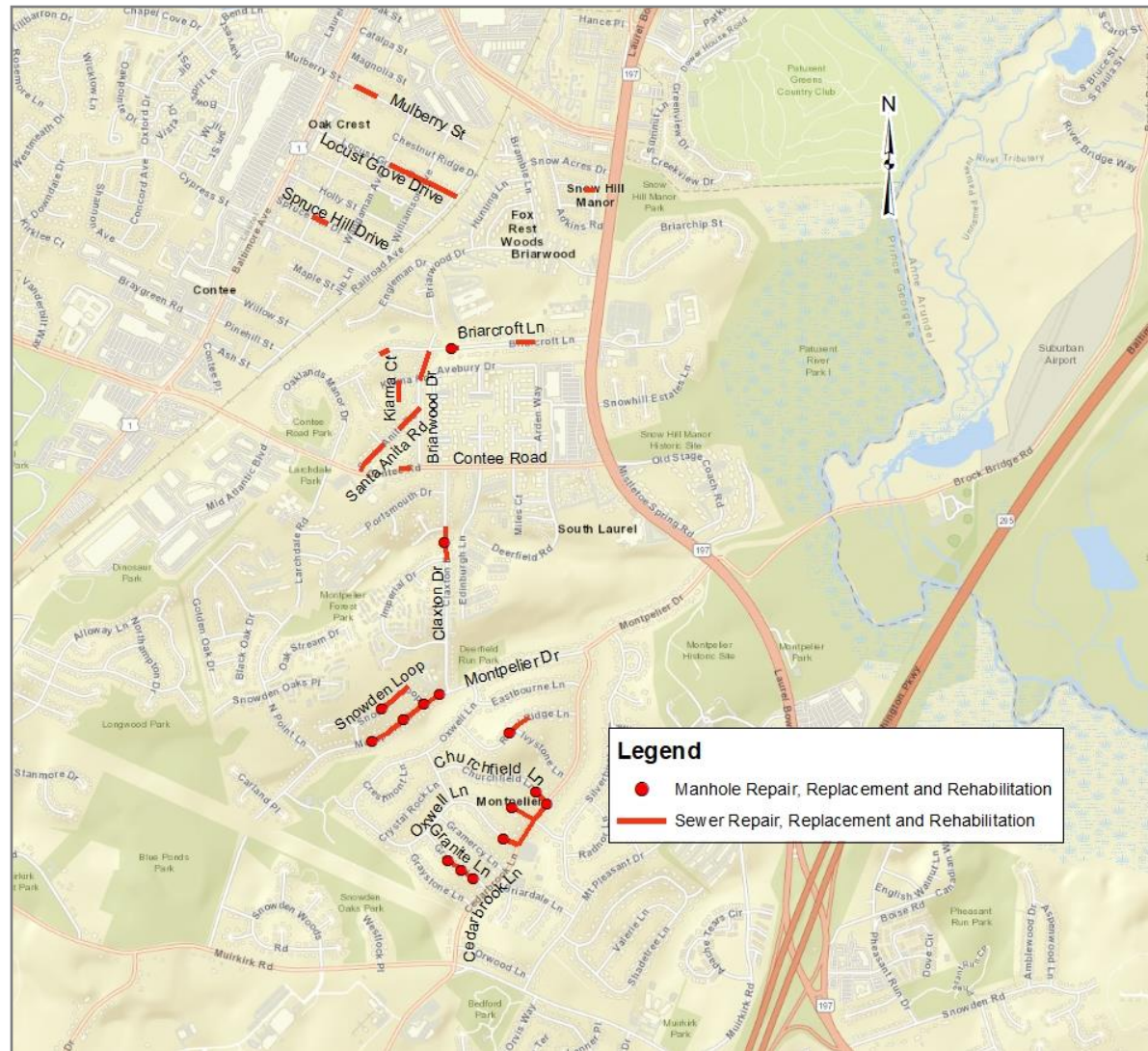
Project Map



Map for CTO Package A, Project No. CICRLLR6862B20

Directly Impacted Streets

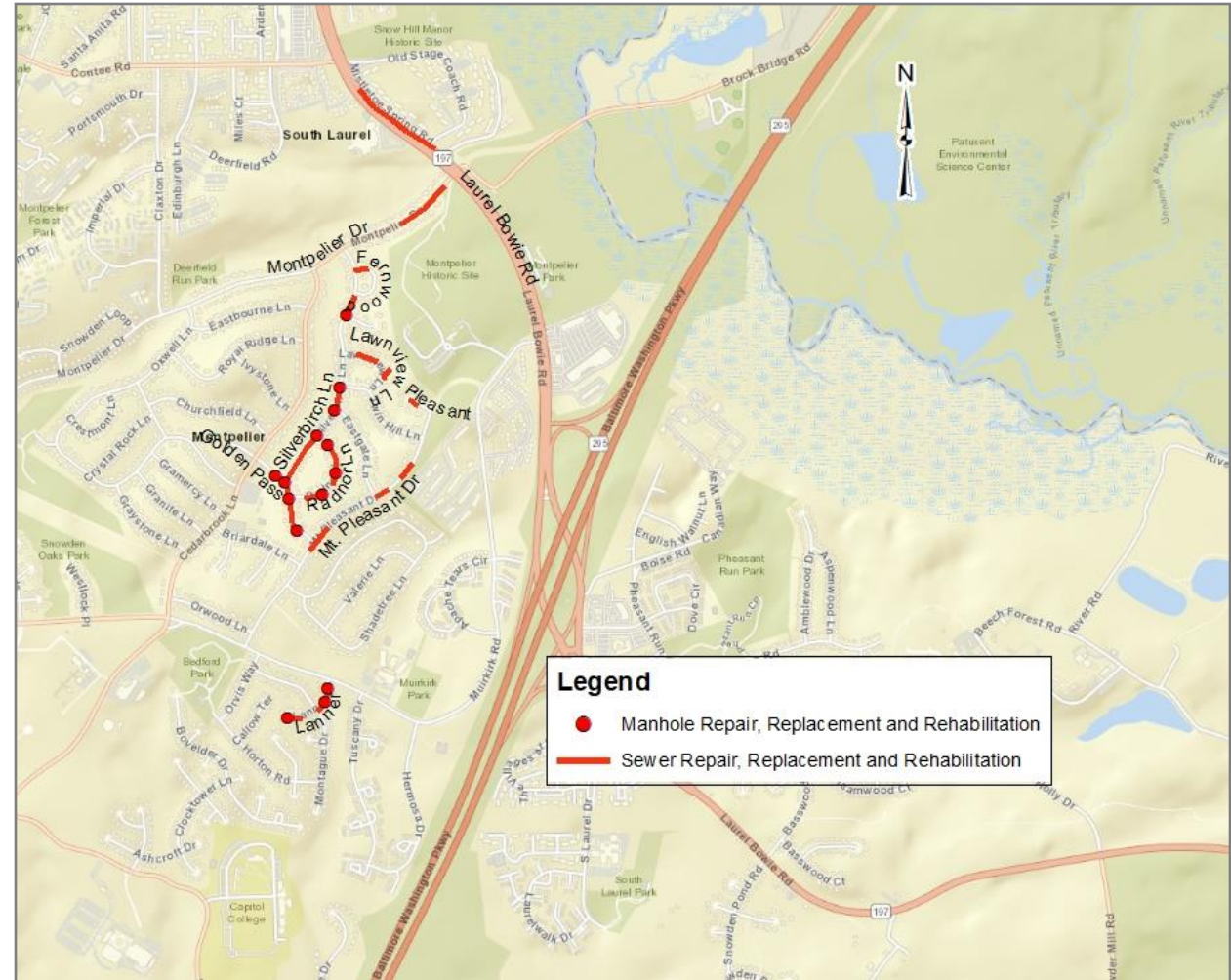
BOXFORD CT,
BRIARCROFT CT,
RIARCROFT LN,
BRIARWOOD DR,
CEDARBROOK LN,
CHURCH FIELD LN,
CLAXTON DR,
CONTEE RD,
GRANITE LN,
KIAMA CT,
LOCUST GROVE DR,
MONTPELIER DR,
MULBERRY ST,
OXWELL LN,
ROBIN PL,
ROYAL RIDGE LN,
SANTA ANITA RD,
SNOWDEN LOOP,
SPRUCE HILL DR



Map for CTO Package B, Project No. CICRLLLR6862C20

Directly Impacted Streets

FERNWOOD TURN,
GOLDEN PASS,
LANNER PL,
LAUREL BOWIE RD,
LAWNVIEW LN,
LEIDEL CT,
MONTAGUE DR,
MONTPELIER DR,
MT PLEASANT DR,
PARKWAY DR,
PLEASANT CT,
RADNOR LN,
SILVERBIRCH LN



Sewer Repairs Types: Trenchless Technology



Sewer Repairs Types: Open Trench



Sewer Repairs Types: Manhole Rehabilitation



Estimated Construction Schedule

- **Expected Construction Start Date: Fall 2021**
- **Estimated Construction Duration: 12 months**
- **Expected Construction Finish Date: Fall 2022 (Weather Permitting)**

Operational Changes in response to Covid-19

- WSSC Water has implemented protocols that align with recommendations from local, state, and federal public health authorities.
- Working to minimize impact
 - Facial masks and physical distancing
- All WSSC Water employees and contractors are required to refrain from coming to work if displaying symptoms of COVID-19.
 - We have implemented robust internal contact tracing and quarantine requirements.
- Earlier notification to customers
 - Contact via handouts



What to Expect During Construction

- Anticipated Work schedule: 9:00 a.m. to 3:00 p.m., Monday-Friday
 - Conditions at some locations may require different work hours
 - Residents will be notified at least 2 days prior to all construction activities
- Construction activities may include:
 - Marking locations of utilities
 - Field Inspections
 - Rehabilitation of sewer mains, manholes and laterals (primarily in the roadway)
 - Pavement restoration where digging is necessary
- Reliable sewer service will be maintained during construction



What to Expect During Construction

- Street parking will be limited on streets with active construction.
 - 48-hours advanced notification will be provided.
 - NO PARKING signs will be posted.
 - All roads will remain accessible at all times during construction. However, certain activities may require temporary closures and delays.
- Access from the public roadway to businesses and homes will be maintained at all times.
- Entry into homes is NOT required.
- Tree removal, only when necessary, pruning and/or stump removal.
 - New trees will be planted where trees needed to be removed
 - Trees on private property will not be removed

Project Summary

- WSSC Water will be rehabilitating pipes, manholes, and some laterals.
 - Lateral work will not extend past the property line.
- WSSC Water is committed to minimizing the impact of construction.
- WSSC Water will restore all areas impacted by construction activities at the end of the project.
- We understand the inconvenience these types of projects can cause and appreciate your patience as we work to provide safe, seamless and satisfying water and sewer services, for our customers every day.
- Sign-up at www.wsscwater.com/CNS, to receive emails and/or text alerts so you can keep updated on work in your neighborhood.

QUESTIONS?

