

# SAN JUAN DRIVE WATER MAIN REPLACEMENT

Project No. BR6220A17

October 13, 2020



# AGENDA

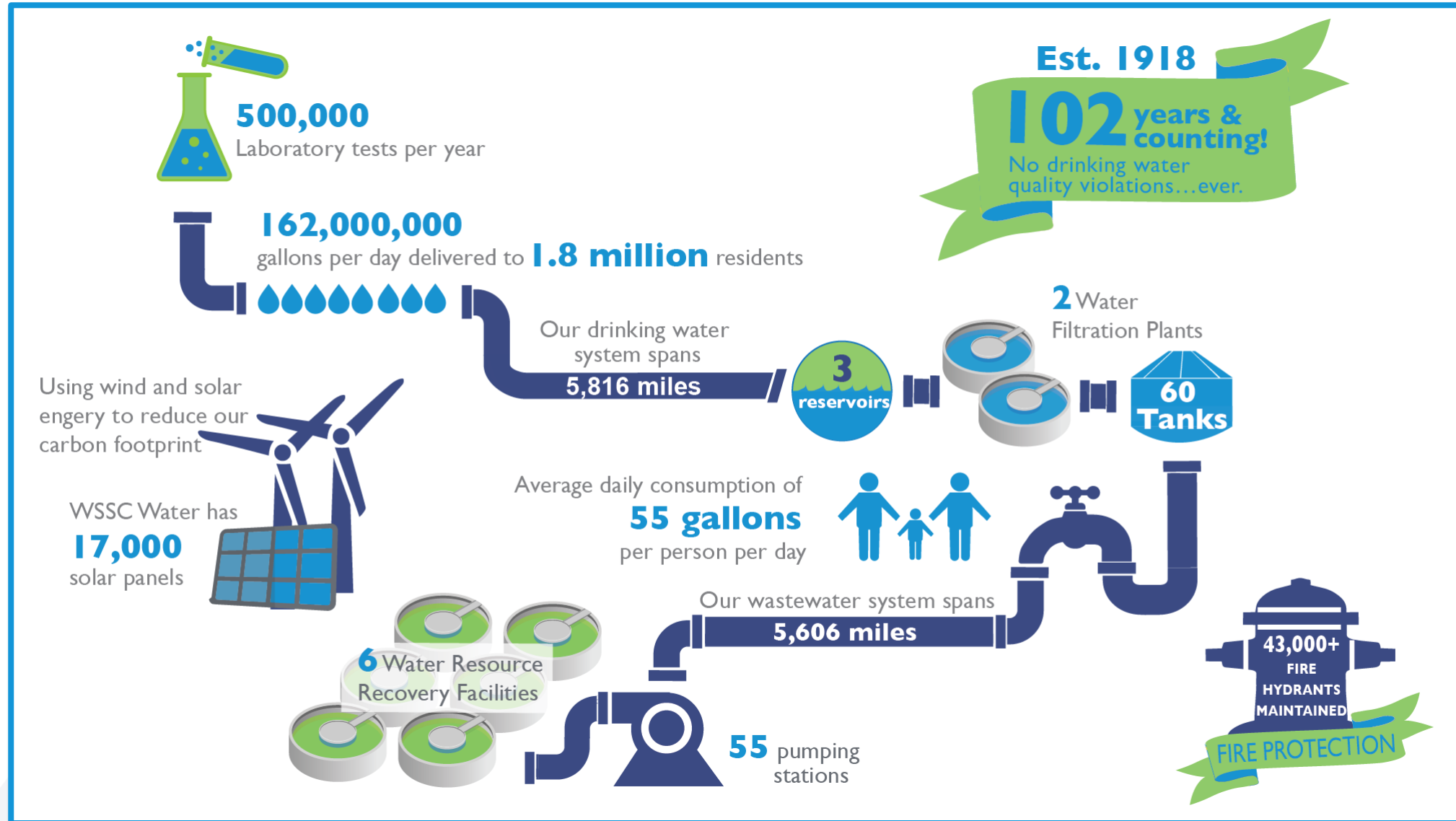
- Introduction of WSSC Water Project Team
- WSSC Water Overview
- Project Overview
- Project Map
- Estimated Construction Schedule
- What to Expect During Construction
- Project Summary
- Questions & Answers

# Project Team

- Tesfai Giorgis – Design Project Manager  
(301) 206-4267, [Tesfai.Giorgis@wsscwater.com](mailto:Tesfai.Giorgis@wsscwater.com)
- Gouladral Williams – Technical Contracts Supervisor (Construction)  
(301) 206-7316, [Gouladral.Williams@wsscwater.com](mailto:Gouladral.Williams@wsscwater.com)
- Steven Tevault – Inspector (Construction)  
(240) 687-8427, [Steve.Tevault@wsscwater.com](mailto:Steve.Tevault@wsscwater.com)
- Stephen Billingsley – Customer Advocate  
(240) 444-5803, [Stephen.Billingsley@wsscwater.com](mailto:Stephen.Billingsley@wsscwater.com)
- Doug Sievers - Urban Forester  
(301) 206-8074, [John.Sievers@wsscwater.com](mailto:John.Sievers@wsscwater.com)
- A. Morton Thomas & Associates Inc., Design Consultant
- Rivers Construction Group, Ltd., Construction Contractor



# WSSC Water Overview

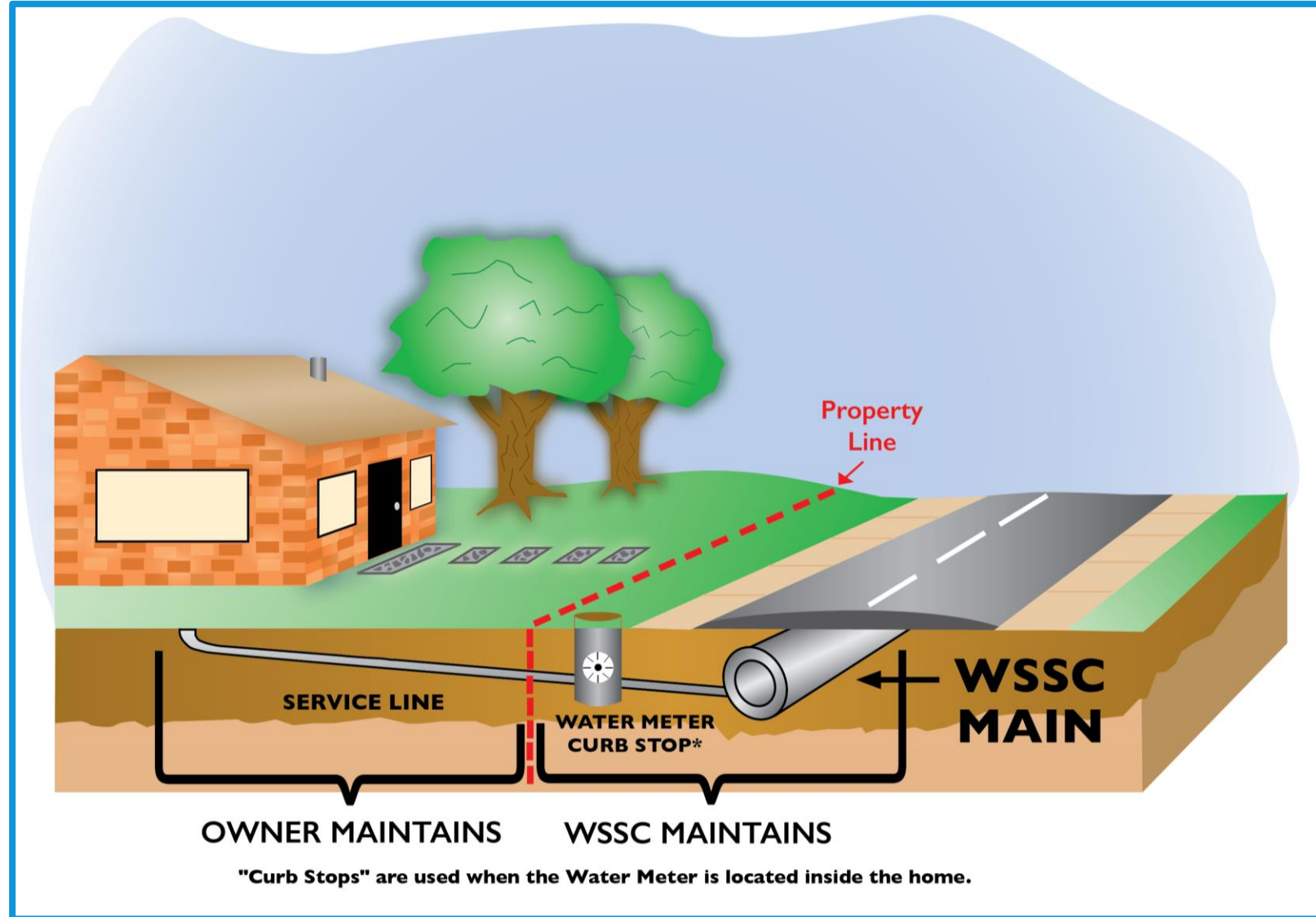


# Project Overview

- WSSC Water is strategically replacing and rehabilitation our aging water and sewer pipes throughout our service area, a part of our effort to enhance service and reliability to our customers.
- The project includes replacing approximately **3.4 miles** of water mains and house connections up to the property line.
- The current water pipes were installed in the 1950's and 1960's and are nearing the end of their life cycle.
- The new water mains will be zinc-coated, ductile iron pipe wrapped in a protective coating, giving the pipes a life expectancy of at least 100 years.
- Replacing the existing pipes will help reduces disruptions to the community, the environment and emergency services due to water main breaks.

# Project Overview

- New watermain will be installed within the roadways
- New house connections (service lines) will be installed up-to the property line

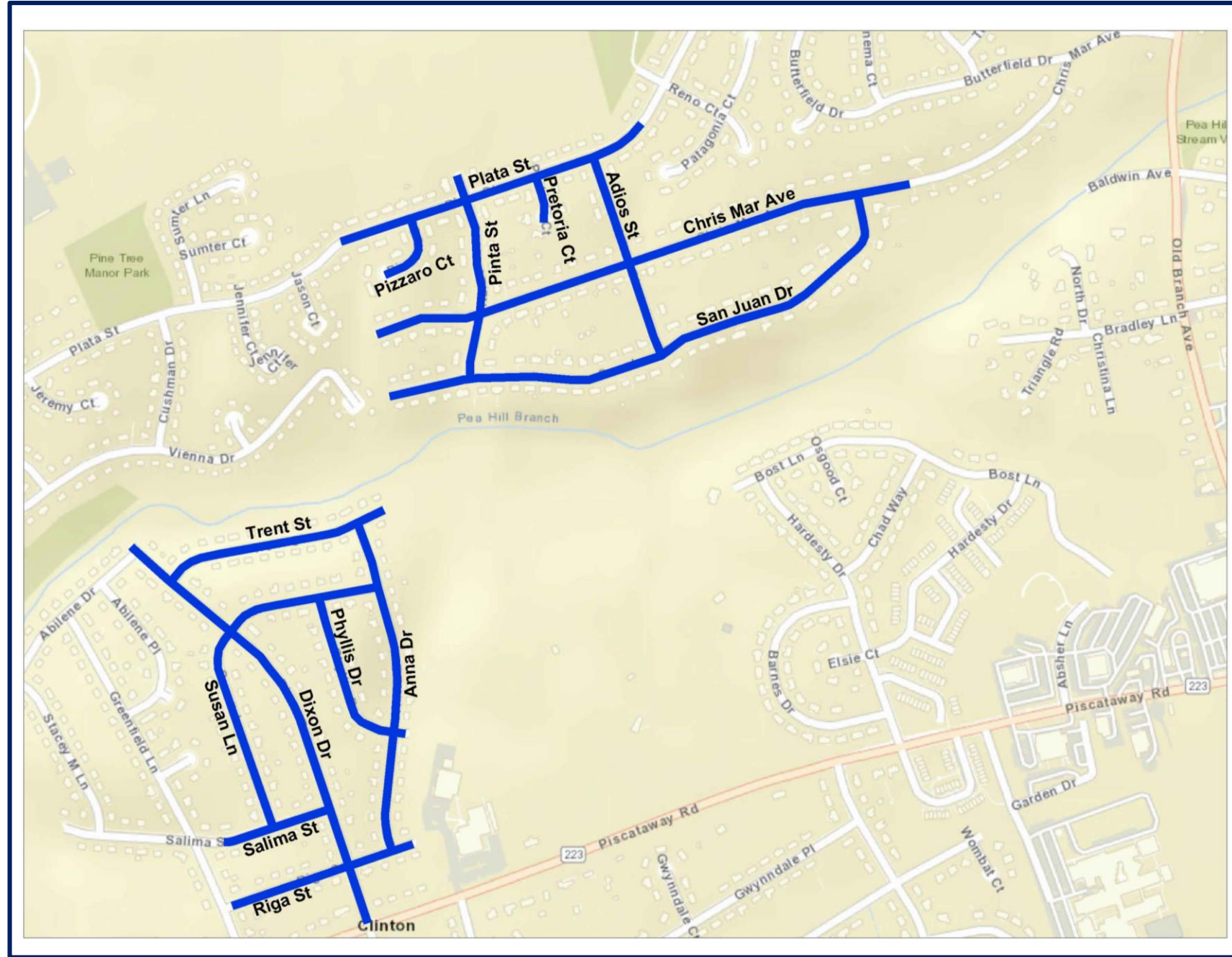




# Project Map

## Directly Impacted Streets

San Juan Drive  
Chris Mar Avenue  
Plata Street  
Adios Street  
Pinta Street  
Pretoria Court  
Pizzaro Court  
Riga Street  
Trent Street | Anna Drive  
Dixon Drive | Phyllis Drive  
Salima Street | Susan Lane



# Estimated Construction Schedule

Anticipated Construction Start: mid-October 2020

Estimated Construction Completion: Fall 2022

➤ *Construction schedules are estimated and weather permitting*



# Operational Changes in response to Covid-19

➤ Infrastructure improvement work continues

➤ Working to minimize impact

- Facial masks and physical distancing

➤ Earlier notification to customers

- Contact via handouts





# What to Expect During Construction

- Open-cut construction method, which involves cutting and excavating a section of the pavement.
- This construction method does create noise and dust.



# What to Expect During Construction

- Anticipated Work Hours: Monday-Friday, 9:00 a.m. – 3:30 p.m.
- Construction activities may include:
  - Field reviews and inspections
  - Survey crews
  - Test pits
  - Construction crews and heavy machinery
- Reliable water and sewer service will be maintained during construction
  - Short water shutdowns of up to 8 hours may be required
  - Advanced notification of these shutdowns will be provided





# Traffic Impacts

- Certain construction activities may require temporary changes to traffic patterns
  - Traffic will be managed to minimize community disruptions
- Access will be maintained to homes during construction
  - Access into homes is **NOT** required
  - Access onto private property is generally **NOT** required
- Parking restrictions
  - WSSC Water will provide 48-hour advance (as denoted by “No Parking” signs) notice prior to any parking restrictions
  - Any vehicles that have not been removed from the designated area will be towed to a nearby street at no cost owner.



# Construction and Notification Signage

- Construction signs with contact persons will be placed throughout the project area





# Project Summary

- The existing distribution system water mains are near the end of their useful lives.
- WSSC Water will be replacing the distribution system water mains and water house connections up to the property line.
- WSSC Water will minimize service disruptions during construction.
- WSSC Water will coordinate work activities with property owners in the project area.
- WSSC Water will restore all areas impacted by construction activities at the end of the project.
- WSSC Water's goal is to provide a reliable water system to customers.

