



MOUNT AIREY WATER MAIN REPLACEMENT

Project No. BR6308A17

October 6, 2020

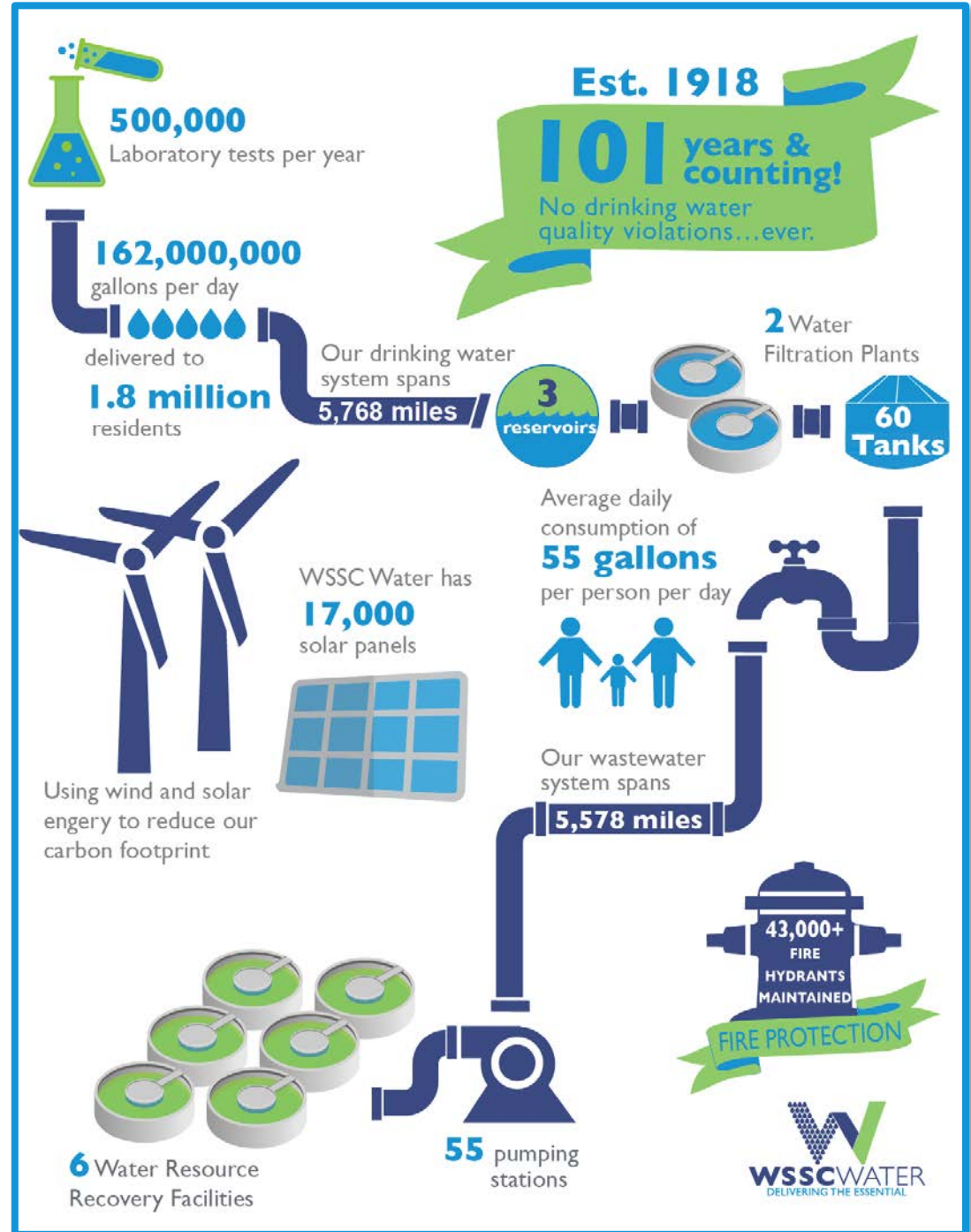
AGENDA

- Introduction to Project Team
- WSSC Water Overview
- Project Overview
- Project Map
- Estimated Construction Schedule
- What to Expect During Construction
- Project Summary
- Questions & Answers

Project Team

- James Campbell, Design Project Manager
(301) 206-8558, James.Campbell@wsscwater.com
- Francell “James” Reed, Technical Contracts Supervisor (Construction)
(301) 206-7363, Francell.Reed@wsscwater.com
- Brandon Stewart, Customer Advocate
(301) 642-1712, Brandon.Stewart@wsscwater.com
- Wallace Montgomery, Engineering Design Consultants
- J. Fletcher Creamer & Son, Inc, Construction Contractor

WSSC Water Overview



Project Overview

- WSSC Water is strategically replacing and rehabilitating our aging water and sewer pipes throughout our service area, a part of our effort to enhance service and reliability to our customers.
- The project includes replacing approximately **3.6 miles** of water mains, and replacing house connections up to the property line.
- The current water pipes were installed in the 1960's and 1970's and are nearing the end of their life cycle.
- The new water mains will be zinc-coated, ductile iron pipe wrapped in a protective coating, giving the pipes a life expectancy of at least 100 years.
- Replacing the existing pipes will help reduce disruptions to the community, the environment and emergency services due to water main breaks.

Project Map

Directly Impacted Streets

Tanterra Circle
Mount Airey Road
Treadway Road
Heritage Hills Drive
Shady View Lane
Forest Wood Drive
Clover Hill Lane | Barnsley Lane
Fulford Street | Brookepark Terrace
Gold Mine Road | Tanterra Way
Roseneath Court | Roseneath Street



Estimated Construction Schedule

Anticipated Construction Start:

October 2020

Estimated Construction Completion:

December 2022

Operational Changes in response to Covid-19

➤ Infrastructure improvement work continues

➤ Working to minimize impact

- Facial masks and physical distancing

➤ Earlier notification to customers

- Contact via handouts



What to Expect During Construction

- Open-cut construction method, which involves cutting and excavating a section of the pavement.
- This construction method does create noise and dust.
- Restoration of all roadways, trees and other areas affected by construction.



What to Expect During Construction

- Anticipated Work Hours: Monday-Friday, 8:00 a.m. – 4:00 p.m.
 - Work may occasionally extend beyond these hours to complete specific tasks.
- Construction activities may include:
 - Field reviews and inspections
 - Survey crews
 - Construction crews and heavy machinery
- Reliable water and sewer service will be maintained during construction
 - Short water shutdowns of up to 8 hours may be required
 - Advanced notification of these shutdowns will be provided



Traffic Impacts

- Certain construction activities may require temporary changes to traffic patterns
 - Traffic will be managed to minimize community disruptions
- Access will be maintained to homes during construction
 - Access into homes is **NOT** required
 - Access onto private property is generally **NOT** required
- Parking restrictions
 - WSSC Water will provide 48-hour advance (denoted by “No Parking” signs) notice prior to any parking restrictions
 - Any vehicles that have not been removed from the designated area will be towed to a nearby street at no cost owner.
- Final restoration of sidewalks roadways and landscaping will take place within 90 days of construction completion.



Construction and Notification Signage

- Construction signs with contact persons will be placed throughout the project area



Project Summary

- The existing distribution system water mains are near the end of their useful lives.
- WSSC Water will be replacing the distribution system water mains and water house connections up to the property line.
- WSSC Water will minimize service disruptions during construction.
- WSSC Water will coordinate work activities with property owners in the project area.
- WSSC Water will restore all areas impacted by construction activities at the end of the project.
- WSSC Water's goal is to provide a reliable water system to customers.

THANK YOU! QUESTIONS?

