

CRYSTAL ROCK WATER MAINREPLACEMENT Project No. BR6269A17

Date: October 14, 2020



AGENDA

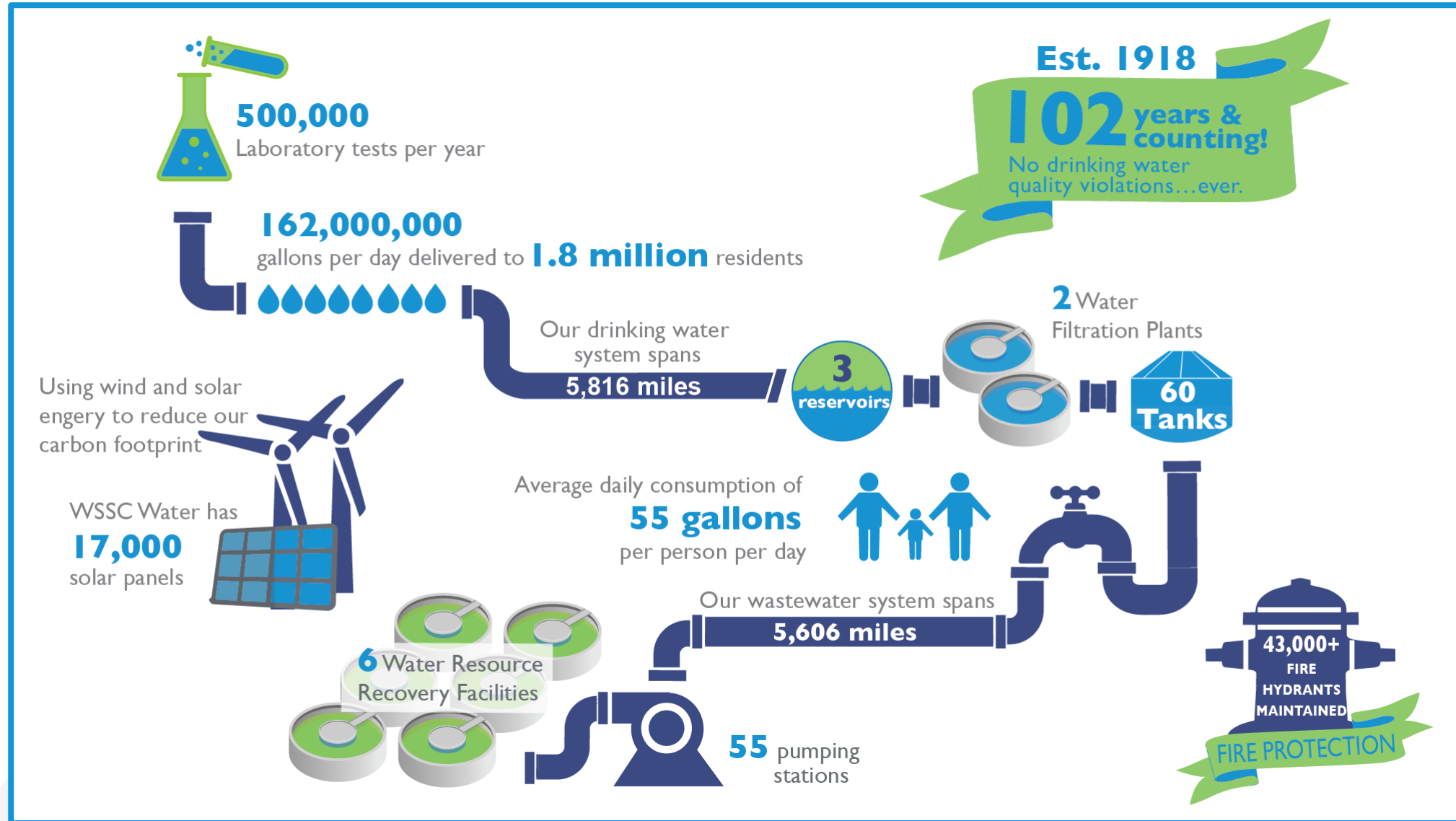
- Introduction of Project Team
- WSSC Water Overview
- Project Overview
- What to Expect During Construction
- Construction Schedule
- Project Summary
- Questions & Answers

Project Team

- Samuel Bajomo, Design Project Manager
(301) 206-8523, Samuel.Bajomo@wsscwater.com
- Tim Allen, Technical Contracts Manager (Construction)
(240) 676-5970, Tim.Allen@wsscwater.com
- David Wilkins, Customer Advocate
(301) 648-6953, David.Wilkins@wsscwater.com
- Sagres Construction Corporation , Construction Contractor



WSSC Water Overview

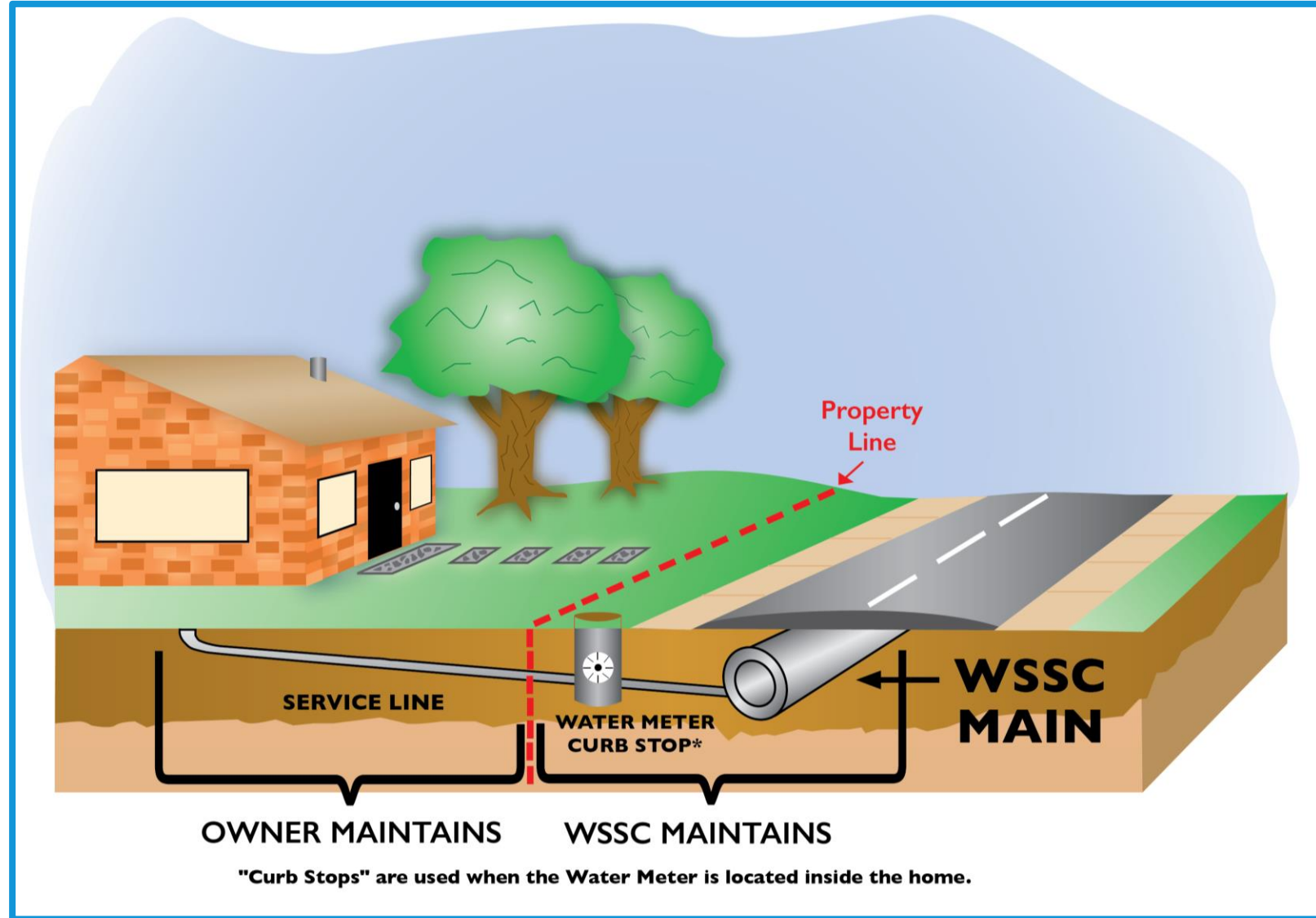


Project Overview

- WSSC Water is strategically replacing and rehabilitation our aging water and sewer pipes throughout our service area, a part of our effort to enhance service and reliability to our customers.
- The project includes replacing approximately **1.6 miles** of water mains, and replacing house connections up to the property line.
- The current water pipes were installed in the **1960's** and are nearing the end of their life cycle.
- The new water mains will be zinc-coated, ductile iron pipe wrapped in a protective coating, giving the pipes a life expectancy of at least 100 years.
- Replacing the existing pipes will help reduces disruptions to the community, the environment and emergency services due to water main breaks.

Project Overview

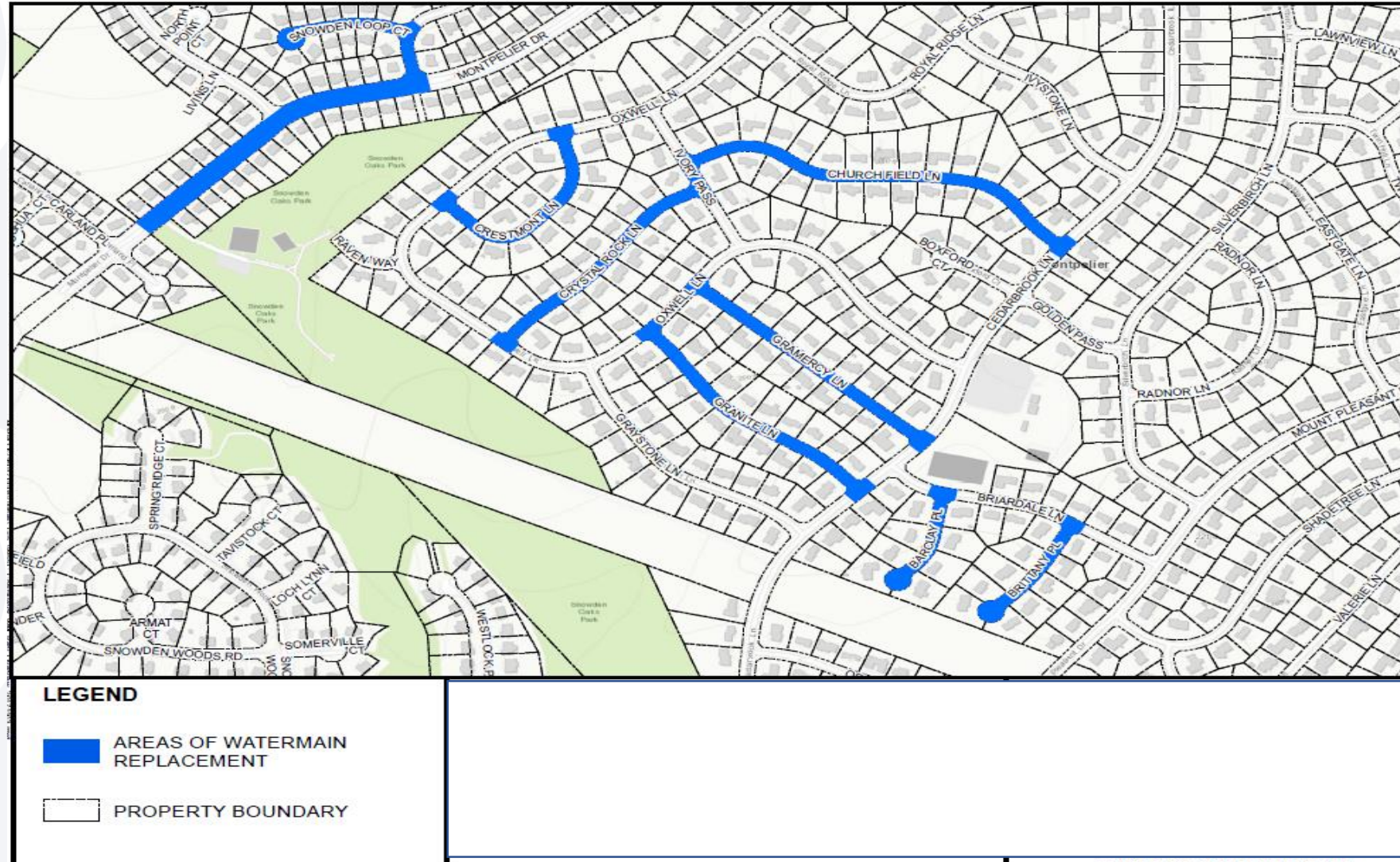
- New watermain will be installed within the roadways
- New house connections (service lines) will be installed up-to the property line



Project Map

Directly Impacted Streets

- Montpelier Drive
- Snowden Loop
- Snowden Loop Court
- Crestmont Lane
- Crystal Rock Lane
- Churchfield Lane
- Granite Lane
- Gramercy Lane
- Barclay Place
- Brittany Place



Estimated Construction Schedule

Anticipated Construction Start: Late October 2020

Estimated Construction Completion: Fall 2021

➤ *Construction schedules are estimated and weather permitting*

Operational Changes in response to Covid-19

- WSSC Water has implemented protocols that align with recommendations from local, state, and federal public health authorities.
- Working to minimize impact
 - Facial masks and physical distancing
- All WSSC Water employees and contractors are required to refrain from coming to work if displaying symptoms of COVID-19.
 - We have implemented robust internal contact tracing and quarantine requirements.
- Earlier notification to customers
 - Contact via handouts



What to Expect During Construction

- Anticipated Work Hours: Monday-Friday, 8:00 a.m. – 4:00 p.m.
- Construction activities may include:
 - Field reviews and inspections
 - Survey crews
 - Test pits
 - Construction crews and heavy machinery
- Reliable water and sewer service will be maintained during construction
 - Water shutdowns of up to 8 hours may be required
 - Advanced notification (48-72 hours) of these shutdowns will be provided



What to Expect During Construction

- Open-cut construction method, which involves cutting and excavating a section of the pavement.
- This construction method does create noise and dust.



Temporary Water Service Installation

- Above-ground (bypass) pipes may be installed to maintain water service to your home.
 - Bypass pipes are not used in cold weather months
- These pipes will be placed along the roadway edge and provide the same quality of water to your home.



Traffic Impacts

- Certain construction activities may require temporary changes to traffic patterns
 - Traffic will be managed to minimize community disruptions
- Access will be maintained to homes during construction
 - Access into homes is **NOT** required
 - Access onto private property is generally **NOT** required
- Parking restrictions
 - WSSC Water will provide 48-hour advance (as denoted by “No Parking” signs) notice prior to any parking restrictions
 - Any vehicles that have not been removed from the designated area will be towed to a nearby street at no cost owner.



Construction and Notification Signage

- Construction signs with contact persons will be placed throughout the project area



Project Summary

- The existing distribution system water mains are near the end of their useful lives.
- WSSC Water will be replacing the distribution system water mains and water house connections up to the property line.
- WSSC Water will minimize service disruptions during construction.
- WSSC Water will coordinate work activities with property owners in the project area.
- WSSC Water will restore all areas impacted by construction activities at the end of the project.
- WSSC Water's goal is to provide a reliable water system to customers.

