

# UNDERSTANDING YOUR BILL

## WHAT HAPPENS BETWEEN THE TIME WSSC WATER READS YOUR METER AND YOU GET A BILL

*We're making some changes and we want to explain that process to you.*

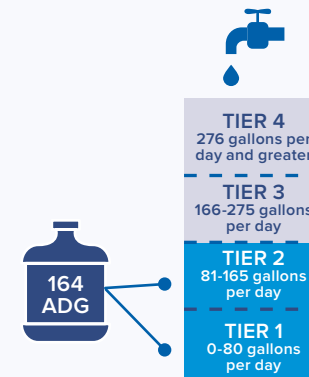
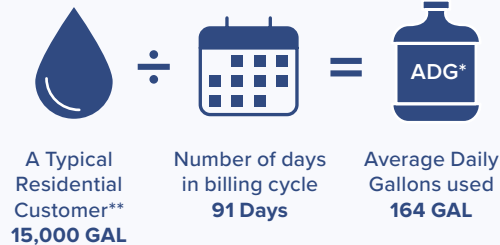


WSSC Water reads your meter about every three months. The meter tells us how many thousands of gallons of water you used since the last time we read your meter.

*\*ADG = Average Daily Gallons*

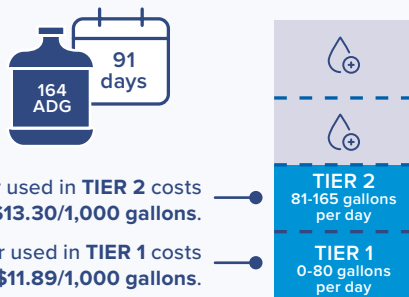
*\*\* Based on the average per person consumption of 55 gallons per day for a 3-person household*

We take the amount of water you used and divide that by the number of days since your last meter read - that tells us the average number of gallons you used per day.



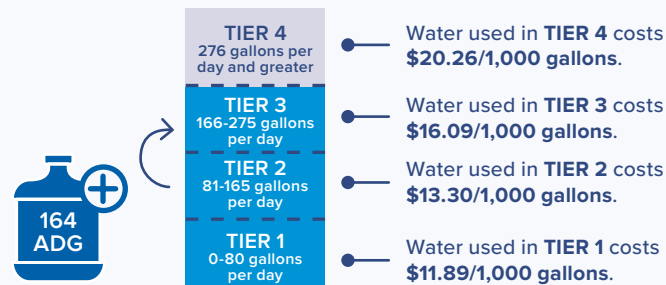
Then we take the average gallons of water used per day and match that to the four tiers in the new rate structure.

We charge you \$11.89 for all the water you use up to 81 gallons per day. The remaining gallons per day are charged \$13.30.



Water used in **TIER 2** costs **\$13.30/1,000 gallons.**

Water used in **TIER 1** costs **\$11.89/1,000 gallons.**



- Water used in **TIER 4** costs **\$20.26/1,000 gallons.**
- Water used in **TIER 3** costs **\$16.09/1,000 gallons.**
- Water used in **TIER 2** costs **\$13.30/1,000 gallons.**
- Water used in **TIER 1** costs **\$11.89/1,000 gallons.**

If water use is greater than the second tier (81-165 gallons per day) we continue moving up the tiers until we reach the fourth tier.

**WSSCWATER**  
DELIVERING THE ESSENTIAL  
Check out our bill calculator at:  
[wsscwater.com/calculator](http://wsscwater.com/calculator)  
301-206-WSSC